



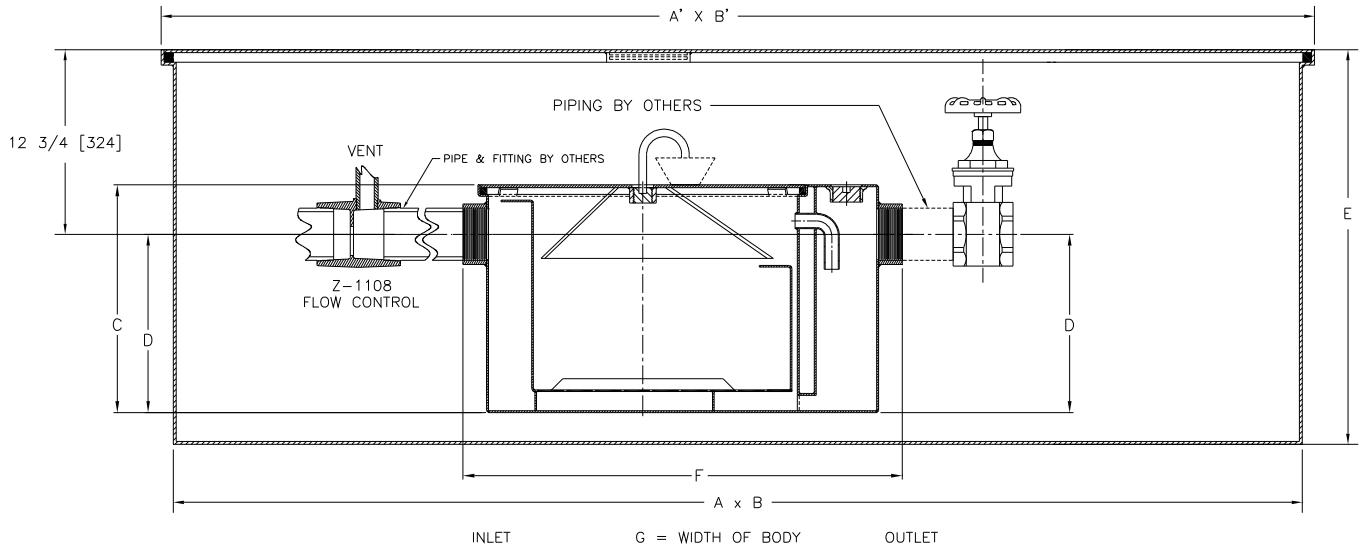
# Z1173-TD-80

## GREASE INTERCEPTOR WITH GREASE ACCUMULATING CONE, INLINE SHUTOFF VALVE, AND RECESSING RECEIVER

SPECIFICATION SHEET

TAG \_\_\_\_\_

Dimensional Data (inches and [ mm ]) are Subject to Manufacturing Tolerances and Change Without Notice



Size	Inlet/ Outlet Size**	Flow Rate G.P.M. [L]	Capacity		Approx. Wt. Lbs. [kg]
			Water Gal. [L]	Grease Lbs. [kg]	
600	3[76]	25 [95]	21 [79]	50 [23]	251 [114]

Dimensions in Inches [mm]									
Size	A	A'	B	B'	C	D	E	F	G
600	72 7/8[1851]	74 1/2[1892]	23 1/4[591]	25 1/4[641]	17[432]	12 1/2[318]	26[660]	32 1/4[819]	19 7/8[505]

**ENGINEERING SPECIFICATION:** ZURN Z1173-TD-80 Acid Resistant Coated interior and exterior fabricated steel grease interceptor, rated at 25 GPM and 50 Lbs. grease capacity, with internal air relief by-pass, bronze cleanout plug and visible double wall trap seal with removable combination pressure equalizing/flow diffusing baffle and sediment tray. Gasketed non-skid secured cover with draw off port having bronze plug, grease accumulating cone, NPT to hose adaptor, 2' [610] flexible hose, hose clamp, and an in line closure valve. Complete with Acid Resistant Coated interior and exterior fabricated steel recessing receiver, enclosed type, gasketed non-skid cover with covered recessed lift handle and Z-1108 Flow Control Fitting. Regularly furnished inlet and outlet in high position. Note: Location of outlet from bottom of interceptor cannot be changed.

**PREFIXES**

\_\_\_\_ Z Acid Resistant Coated Fabricated Steel\*

**SUFFIXES**

- \_\_\_\_ -L Angle type (Z-1108-L) flow control device with plunger (no additional charge).
- \_\_\_\_ -R Acid Resistant Coated interior and exterior fabricated steel recessing receiver for recessed installation. Furnished with adjustable support brackets and gasketed non-skid cover with covered recessed lift handle.

\*\* Inlet and outlet sizes shown indicate standard operating sizes and flow control settings. Size #300 will have 3[75] connections reduced to 2[50] and sizes #600 thru #900 will have 4[100] connections reduced to 3[75] as standard. If changed, flow control must be adjusted accordingly.

<b>REV.</b>	<b>DATE: 6/6/06</b>	<b>C.N. NO. 95181</b>
<b>DWG. NO. P-15293</b>		<b>PRODUCT NO. Z1173-TD-80</b>

\*REGULARLY FURNISHED UNLESS OTHERWISE SPECIFIED