

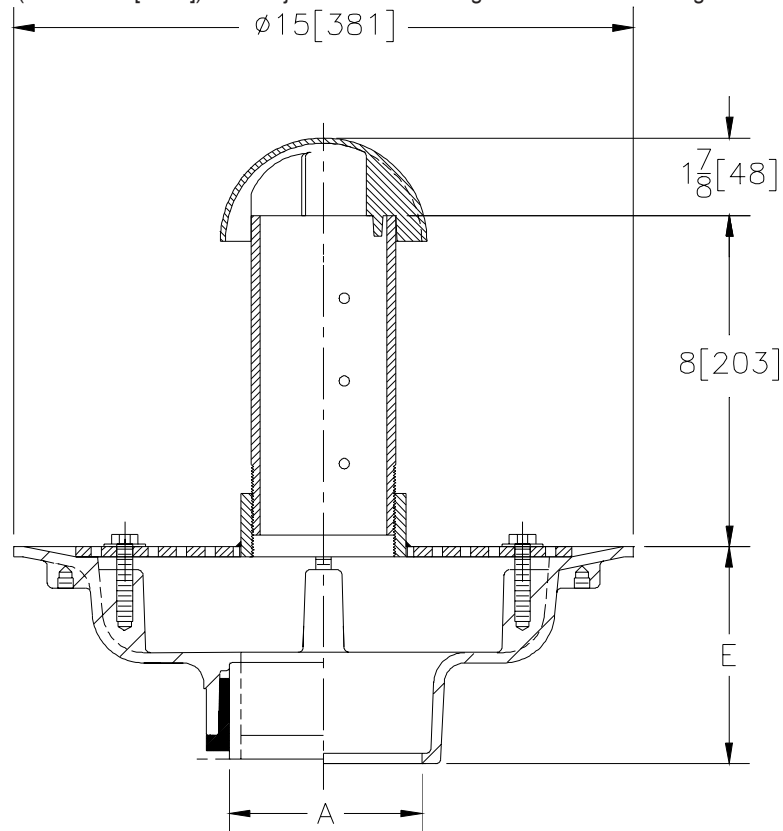


Z-349-77

TERRACE PLANTING AREA DRAIN

TAG _____

Dimensional Data (inches and [mm]) are Subject to Manufacturing Tolerances and Change Without Notice



A-Pipe Size Inches	Approx. Wt. Lbs. [kg]	Clamp Collar Open Area Sq. In. [cm ²]
2-3-4 [50-75-100]	40 [18]	48 [310]

ENGINEERING SPECIFICATION: ZURN Z-349-77 Terrace Planting area Drain, Dura-Coated cast iron body, perforated overflow standpipe with dome and membrane flashing clamp collar with 1/2 [13] dia. perforations.

OPTIONS (Check/specify appropriate options)

PIPE SIZE

- 2 thru 6 [50 thru 150]
- 2 thru 6 [50 thru 150]
- 2 thru 6 [50 thru 150]
- 2 thru 6 [50 thru 150]]
- 2 thru 4 [50 thru 100]

(Specify size/type) **OUTLET**

- _____ IC Inside Caulk
- _____ IG Inside Caulk w/Sealtrol Gskt.
- _____ IP Threaded
- _____ NH No-Hub
- _____ NL Neo-Loc

'E' BODY HT. DIM.

- 5 1/4 [133]
- 5 1/4 [133]
- 3 3/4 [95]
- 5 1/4 [133]
- 4 5/8 [117]

PREFIXES

- _____ Z- D.C.C.I Body w/Standpipe and Dome*
- _____ ZB- D.C.C.I Body, Clamp w/Polished Bronze Standpipe and Dome
- _____ ZN- D.C.C.I Body, Clamp w/Polished Nickel Bronze Standpipe and Dome

SUFFIXES

- _____ -C Underdeck Clamp
- _____ -G Galvanized Cast Iron
- _____ -SD Longer Standpipe (Specify Height Required)
(For each Additional 1 [25] over 8 [203s])
- _____ -SS Stainless Mesh Screen Over Standpipe

REV.	DATE: 2/3/98	C.N. NO. 76598
DWG. NO. P-14592 PRODUCT NO. Z-349-77		

*REGULARLY FURNISHED UNLESS OTHERWISE SPECIFIED