



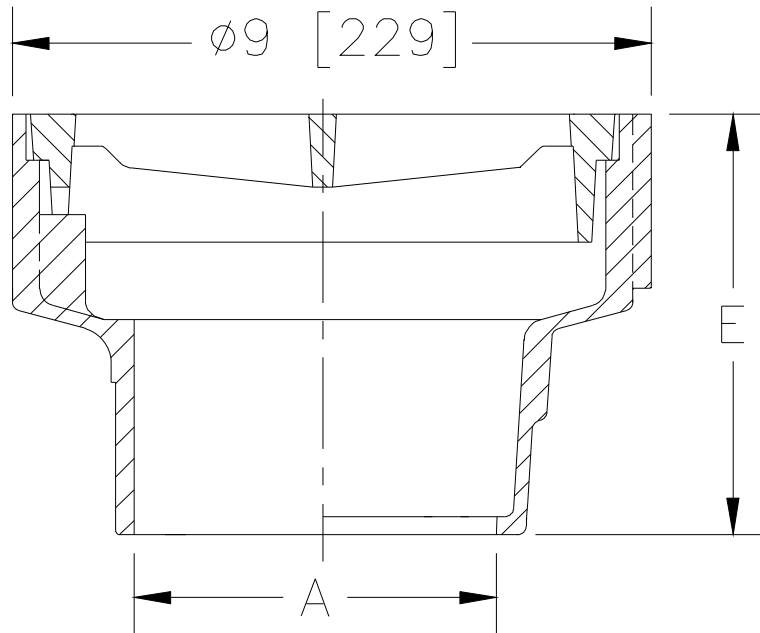
Z551-TG

9 [229] DIAMETER MEDIUM DUTY DRAIN W/ TRACTOR GRATE

SPECIFICATION SHEET

TAG _____

Dimensional Data (inches and [mm]) are Subject to Manufacturing Tolerances and Change Without Notice



A- Pipe Size In.[mm]	Approx. Wt. Lbs. [kg]	Grate Open Area Sq. In. [cm ²]
2,3,4 [51,76,102]	20 [9]	18 [116]

ENGINEERING SPECIFICATION: ZURN Z551-TG
9" [229mm] Diameter top drain, Dura-Coated cast iron body with bottom outlet, and tractor grate.

OPTIONS (Check/specify appropriate options)

PIPE SIZE

4 [102]
 2,3,4 [51,76,102]
 2,3,4 [51,76,102]

(Specify size/type) OUTLET

___ IP Threaded
 ___ NH No-Hub
 ___ NL Neo-Loc

'E' BODY HT. DIM.

4 [102]
 5-3/4 [146]
 5-1/8 [130]

PREFIXES

___ Z D.C.C.I. Body and Grate*
 ___ ZN D.C.C.I. Body with Polished Nickel Bronze Grate (Add 3/16 [5] to 'E' Dim.)

SUFFIXES

___ -DG Duresist Grate
 ___ -G Galvanized Cast Iron
 ___ -P Trap Primer Connection
 ___ -TC Neo-Loc Test Cap Gasket (2,3,4 [51,76,102] NL Bottom Outlet Only)
 ___ -VP Vandal Proof Secured Top

* Regularly furnished unless otherwise specified.