



Z1202-N4-XB

BARIATRIC CARRIER - 1000 lbs [454 kg]
EZCARRY® ADJUSTABLE VERTICAL HIGH PERFORMANCE
SIPHON JET NO-HUB WATER CLOSET CARRIER SYSTEM

SPECIFICATION SHEET

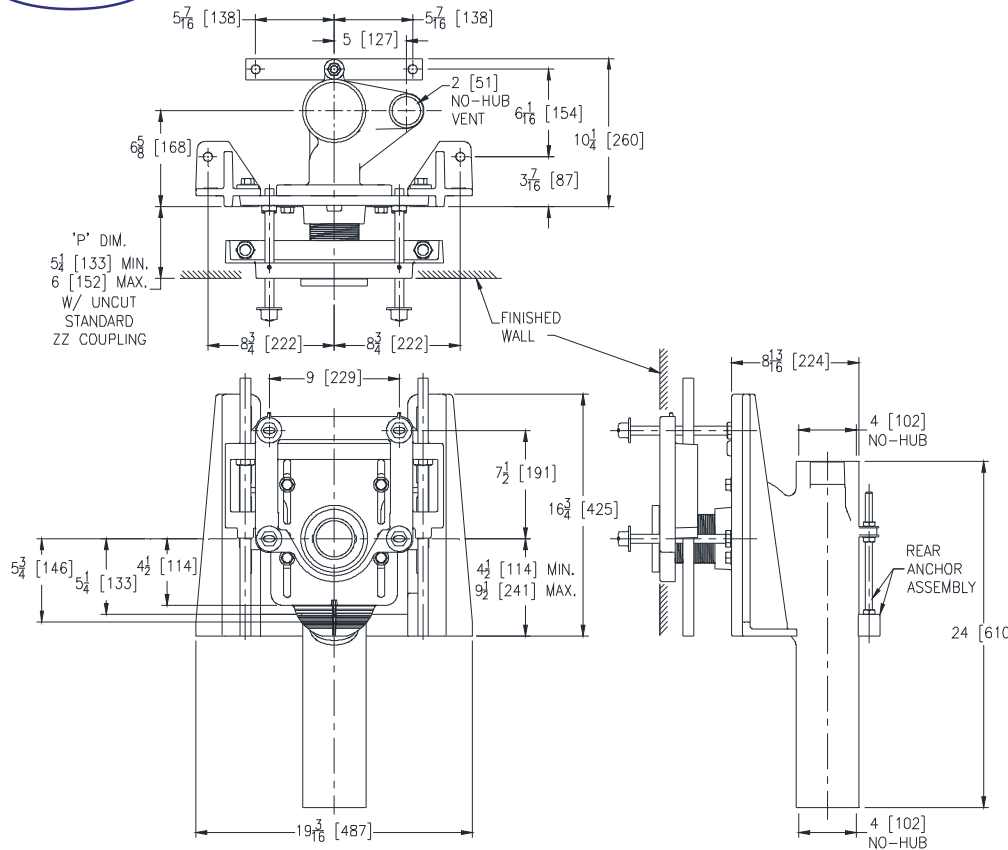
TAG _____

**PATENT
PENDING**

Dimensional Data (inches and [mm]) are Subject to Manufacturing Tolerances and Change Without Notice

Z1202-N4-XB Illustrated

Product Number	Approx. Wt. lbs [kg]
Z1202-N4-XB	115 [52]



Note:

1. Cut ZZ Coupling, Min. 'P' Dim. Obtainable = 3 [76]
2. Feet bolted to floor using min. 1/2 [13] dia. anchors.
3. Rear anchor foot required for secure installation.
4. Floor anchors must each be able to withstand a pull-out force of 748 lbs [339 kg].
5. Pull-out forces are calculated values with standard coupling assembly. No safety factor has been applied. See Form # C38 for more information.
6. 2 [51] No-Hub vent connection regularly furnished on right hand side. Left hand available when specified (Suffix -VL)
7. Auxiliary inlet available right (-JR) or left (-JL) or both sides (-JJ) when specified.

ENGINEERING SPECIFICATION: ZURN Z1202-N4-XB

EZCarry® Bariatric vertical siphon jet water closet carrier system, with high performance Dura-Coated cast iron main fitting with hydro-mechanically optimized sweep, 4" [102 mm] no-hub connections, and extended 2" [51 mm] vent. Corrosion resistant, adjustable 3" [76mm] x 6" [102mm] cast iron coupling, designed to increase flow velocity and line carry, and labor saving "Neo-Seal" bonded gasket optimizes flow performance while reducing installation steps. Complete system includes an adjustable, gasketed faceplate; floor mounted foot supports; rigid support frame assembly; extra-heavy-duty 1/2" [13 mm] rear anchor tie down; fixture bolts, trim, and stud protectors. EZCarry® XB system complies with all applicable requirements of ASME A112.6.1M up to a 1000 lbs [454 kg] maximum static load.

OPTIONS (Check/specify appropriate options)

___ Z1202-N4-XB 4 [102] No-Hub Stack, Single Inlet, 2 [51] Right Hand Vent

PREFIXES

___ Z D.C.C.I. System with Zurn ZZ Adjustable Coupling*

SUFFIXES

- | | | | |
|---------|--|---------|--|
| ___ -CC | Corrosion Resistant Cast Iron Coupling (2-1/4 to 12 [57 to 305]) | ___ -VL | Left Hand Vent Connection |
| ___ -G | Galvanized Cast Iron | ___ -VP | Vandal-Proof Trim |
| ___ -JJ | Two 2 [51] Auxiliary Inlets | ___ -50 | Flush Valve Supply Support for Water Closets |
| ___ -JL | 2 [51] Left-Hand Auxiliary Inlet | | |
| ___ -JR | 2 [51] Right-Hand Auxiliary Inlet | | |

* Regularly furnished unless otherwise specified.

Zurn Industries, LLC | Specification Drainage Operation
1801 Pittsburgh Avenue, Erie, PA U.S.A. 16502 · Ph. 855-663-9876, Fax 814-454-7929
In Canada | Zurn Industries Limited
3544 Nashua Drive, Mississauga, Ontario L4V 1L2 · Ph. 905-405-8272, Fax 905-405-1292
www.zurn.com

Rev. C
Date: 12/21/16
C.N. No. 135846
Prod. | Dwg. No. Z1202-N4-XB