



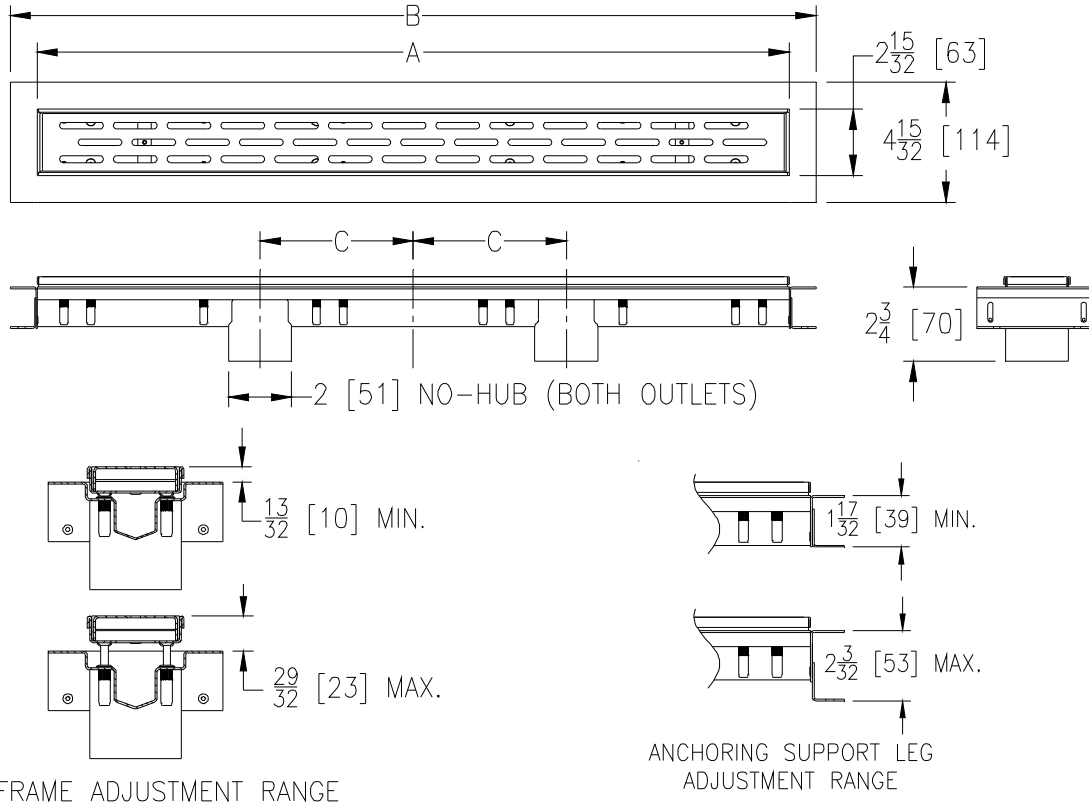
ZS880-99

36 [314] STAINLESS STEEL LINEAR SHOWER DRAIN WITH TWO BOTTOM OUTLETS

SPECIFICATION SHEET

TAG _____

Dimensional data (inches and [mm]) are subject to manufacturing tolerances and change without notice.



Dimensions in Inches [mm]				Approx. Wt. Lbs. [kg]	Grate Open Area Sq. In. [cm ²]
Product Designation	A	B	C		
-36	36 [914]	38 [965]	5-1/2 [140]	6.4 [2.9]	20 [129]

ENGINEERING SPECIFICATION: ZS880-99

All Type 304 (CF8) Fabricated Stainless Steel Linear Shower Drain. Complete with vertically adjustable anchoring support legs, anti-ponding V-shaped channel with two 2" [51mm] No-Hub bottom outlets, adjustable secured leveling frame with built-in tile edge, and secured, light-duty, slotted heel-proof grate. Drain is designed for installation in a minimum 2" [51mm] concrete pour and can be adjusted to accommodate 1/4" [6mm] and 3/8" [10mm] finished tile thicknesses.

OPTIONS (Check/specify appropriate options)

PREFIXES

- ___ ZS All Type 304 (CF8) Stainless Steel*
- ___ ZR All Type 304 (CF8) Stainless Steel w/ Oil-Rubbed Bronze Finish

GRATE OPTIONS

- ___ -BW Basket Weave Grate
- ___ -DB Decorative Block Grate
- ___ -SG Serenity Grate
- ___ -TG Tile In-Lay Grate
- ___ -WG Wave Grate

SUFFIXES

- ___ -2IP 2 [51] Female IP Threaded Outlet
- ___ -FS Outlet Filter Screen
- ___ -LB Lower Body With Membrane Clamp Collar
- ___ -SO Side Outlet (2 [51] No-Hub), Not available with -LB Option

* Regularly furnished unless otherwise specified