

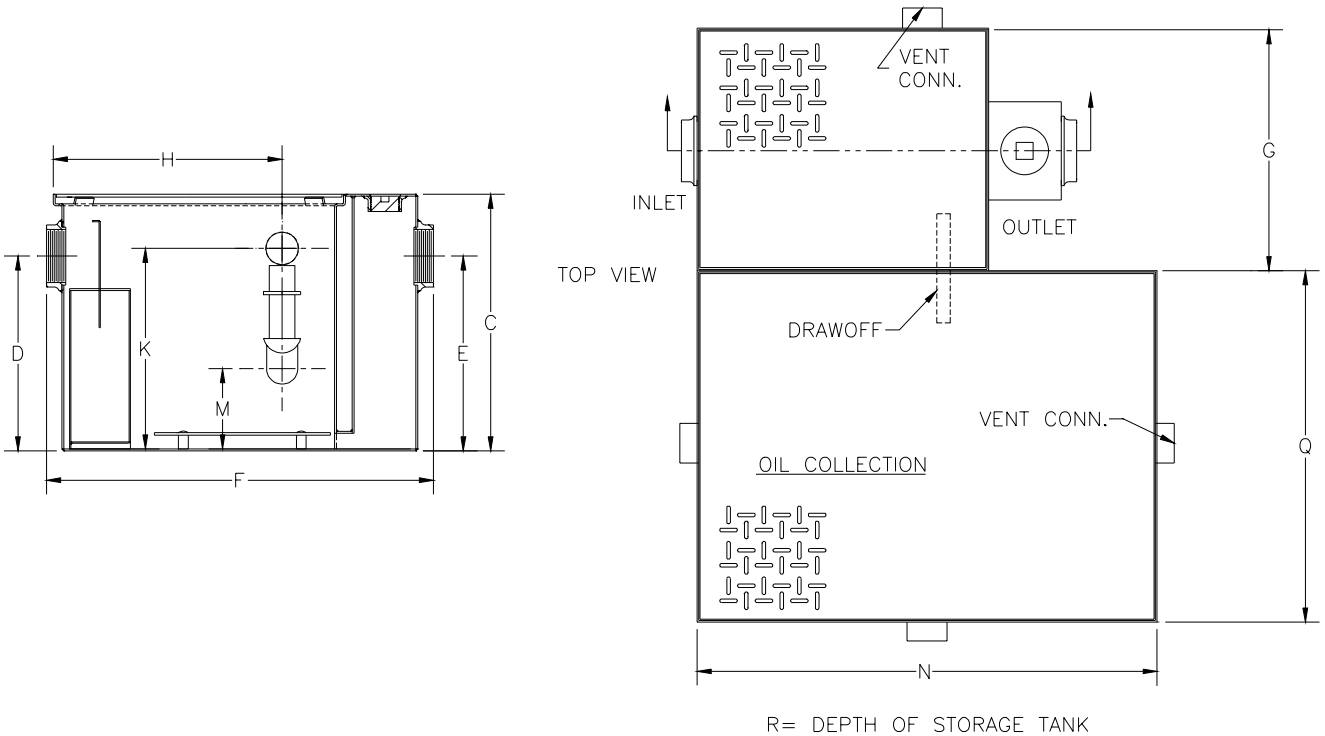


**Z-1186-113  
OIL INTERCEPTOR  
W/ INTEGRAL STORAGE TANK**

SPECIFICATION SHEET

TAG \_\_\_\_\_

Dimensional Data (inches and [ mm ]) are Subject to Manufacturing Tolerances and Change Without Notice



| SIZE | Inlet/Outlet Size** | Flow Rate G.P.M. | Water Capacity Gal.[L] | Approx. Wt. Lbs.[kg] | Oil Storage Tank Capacity Gal.[L] |
|------|---------------------|------------------|------------------------|----------------------|-----------------------------------|
| 300  | 2 [51]              | 10 [38]          | 7 [26]                 | 56 [25]              | 20 [76]                           |

| Dimensions in inches |              |             |              |          |              |              |              |          |          |              |
|----------------------|--------------|-------------|--------------|----------|--------------|--------------|--------------|----------|----------|--------------|
| SIZE                 | C            | D/E         | F            | G        | H            | K            | M            | N        | Q        | R            |
| 300                  | 13 5/8 [346] | 8 1/8 [206] | 22 5/8 [575] | 14 [356] | 11 5/8 [295] | 10 5/8 [270] | 4 5/16 [110] | 30 [762] | 12 [305] | 22 1/2 [572] |

**ENGINEERING SPECIFICATION:** ZURN Z-1186-113 Acid Resistant Coated interior and exterior fabricated steel oil interceptor, with bronze cleanout plug and visible double wall trap seal, removable combination pressure equalizing/flow diffusing baffle and sediment bucket, horizontal baffle, oil drawoff, vent connections, secured gasketed non-skid cover, complete with flow control fitting and integral storage tank. Regularly furnished with inlet and outlet in high position.

**OPTIONS** (Check/specify appropriate options)

**PREFIXES**

— **Z-** Acid Resistant Coated Fabricated Steel\*  
 \*\* Inlet and outlet sizes shown indicate standard operating sizes and flow control settings. Size #300 and #400 will have 3 [76] connections reduced to 2 [51] as standard. Size #500 thru #800 will have connections reduced to 3[76] as standard. If changed, flow control and air relief by-pass must be adjusted accordingly.

|                        |                               |                       |
|------------------------|-------------------------------|-----------------------|
| <b>REV.</b>            | <b>DATE: 1/29/02</b>          | <b>C.N. NO. 88292</b> |
| <b>DWG NO. P-14867</b> | <b>PRODUCT NO. Z-1186-113</b> |                       |

\*REGULARLY FURNISHED UNLESS OTHERWISE SPECIFIED