



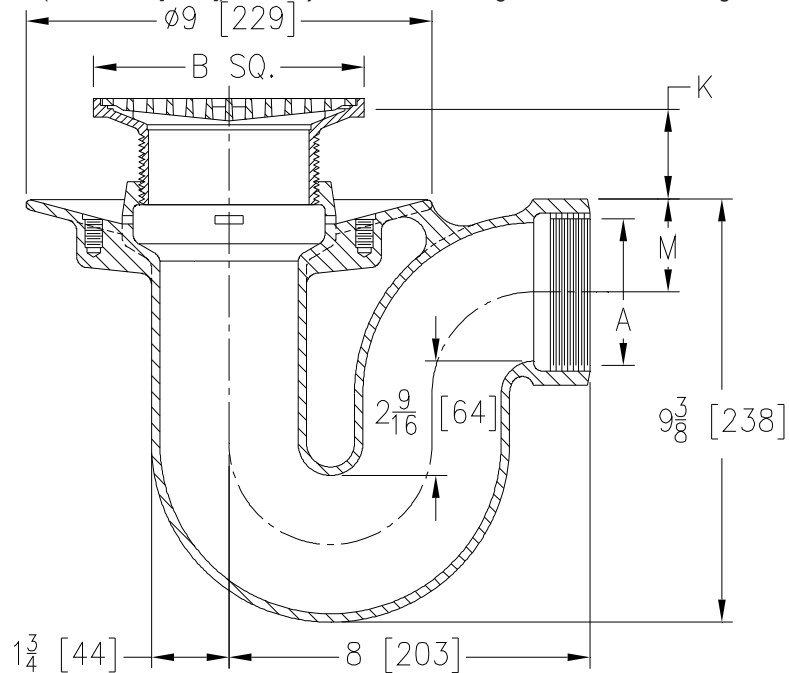
Z453S

DEEP SEAL TRAP DRAIN W/ "TYPE S" STRAINER

SPECIFICATION SHEET

TAG _____

Dimensional Data (inches and [mm]) are Subject to Manufacturing Tolerances and Change Without Notice



Dimensions In Inches [mm]					Approx. Wt. Lbs. [kg]	Strainer Open Area Sq. In. [cm ²]
A Pipe Size	B Square Top Size	K		M		
		Min.	Max.			
2, 3 [51, 75] 4 [102]	5 [127]	3/4 [19]	1-7/8 [48]	2-1/8 [54]	30 [14]	9 [58]
2, 3 [51, 76] 4 [102]	6 [152]	1-1/8 [29]	2-1/8 [54]	2-1/8 [54]	31 [14] 32 [15]	13 [83]
2, 3 [51, 76] 4 [102]	7 [178]	1-3/8 [35]	2-1/2 [64]	2-1/8 [54]	33 [15]	21 [135]
4 [102]	8 [203]	1-3/8 [35]	2-1/2 [64]	2-3/4 [70]	33 [15]	28 [180]

ENGINEERING SPECIFICATION: ZURN ZN453S

Deep Seal trap floor and shower drain, Dura-Coated cast iron body with uniform diameter integral trap, side outlet, seepage pan, and adjustable "TYPE S" polished, nickel bronze square strainer.

OPTIONS (Check/specify appropriate options)

PIPE SIZE

2, 3, 4 [51, 76, 102]
2, 3, 4 [51, 76, 102]

(Specify size/type) **OUTLET**

___ IP Threaded
___ NH No-Hub

PREFIXES

___ ZB D.C.C.I. Body Assembly w/ Polished Bronze Top
___ ZN D.C.C.I. Body Assembly w/ Polished Nickel Bronze Top*

SUFFIXES

___ -C Clamping Collar
___ -G Galvanized Cast Iron
___ -P Trap Primer Connection (Specify 1/2 [13] or 3/4 [19])
___ -PC Protective Cover
___ -U 1 - 3 [25 - 76] High Extension Adapter
___ -VP Vandal-Proof Secured Top
___ -Y Sediment Bucket

* Regularly furnished unless otherwise specified.