



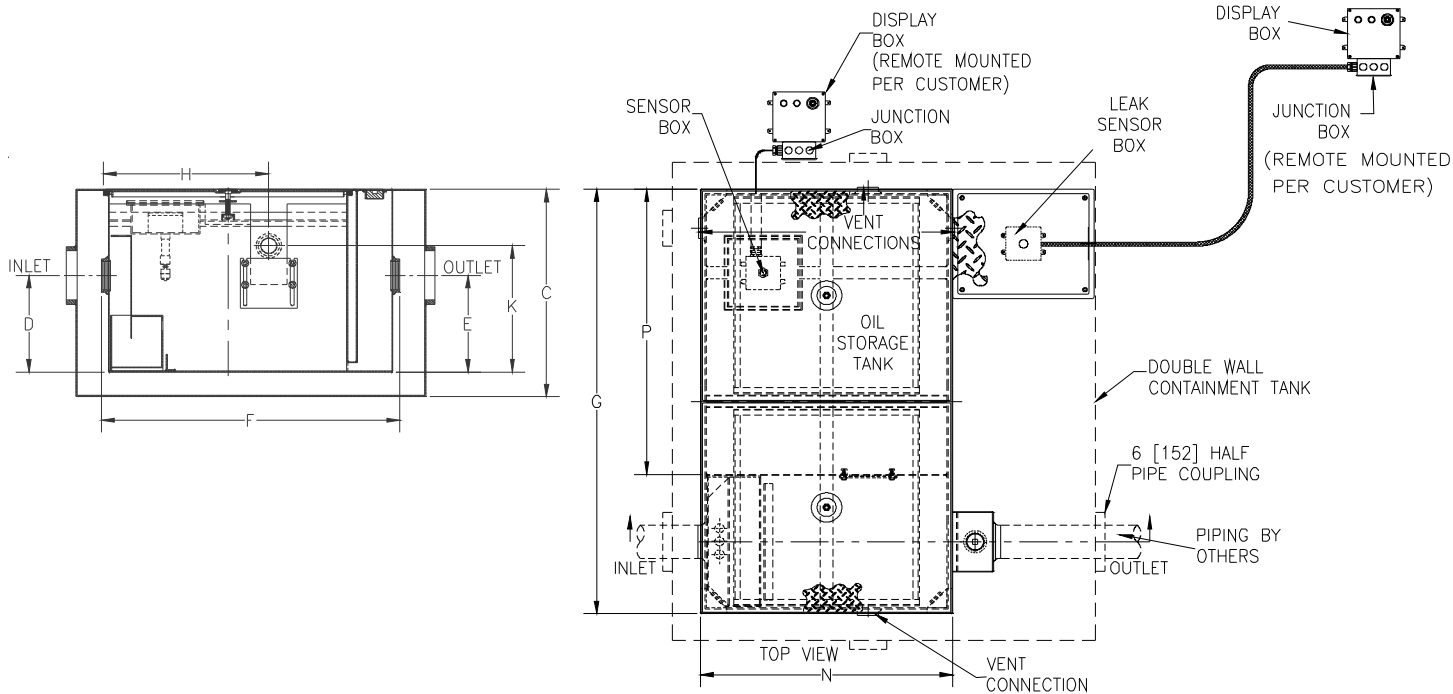
Z1186-ST-100

OIL INTERCEPTOR W/ INTEGRAL STORAGE TANK, OIL LEVEL SENSOR & DOUBLE WALL CONTAINMENT TANK W/ LEAK DETECTOR SENSOR

SPECIFICATION SHEET

TAG _____

Dimensional Data (inches and [mm]) are Subject to Manufacturing Tolerances and Change Without Notice



SIZE	Inlet/Outlet Size	Flow Rate G.P.M.	Water Capacity Gal.[L]	Approx. Wt. Lbs.[kg]	P
600	3 [76]	25 [95]	16 [61]	545 [248]	34-3/16 [868]
800	3 [76]	50 [190]	30 [114]	529 [240]	48-1/4 [1226]

Dimensions in inches [mm]								Oil Storage Tank Capacity Gal.[L]	No. of Covers
SIZE	C	D/E	F	G	H	K	N		
600	22-1/4 [565]	11-3/4 [298]	35-7/32 [895]	50-7/8 [1292]	19-1/4 [489]	15-1/4 [387]	29 [737]	55 [208]	2
800	28-1/4 [718]	14-3/16 [360]	49-7/16 [1256]	70-1/8 [1781]	26-1/4 [667]	21-1/4 [540]	43 [1092]	125 [473]	3

ENGINEERING SPECIFICATION: ZURN Z1186-ST-100

Acid Resistant Coated interior and exterior fabricated steel oil interceptor, with oil level sensor box containing a float oil level sensor with leak detection, bronze cleanout plug and visible double wall trap seal, removable combination pressure equalizing/flow diffusing baffle and sediment bucket, oil drawoff, vent connections, secured gasketed non-skid cover, complete with flow control fitting, left hand integral storage tank and double wall containment tank with leak detection sensor. Regularly furnished with inlet and outlet in high position. Note: location of outlet from bottom of interceptor cannot be changed.

Note:

1. Double wall construction will extend the overall length width of the unit by 3 [76] per side and increase the overall depth by 3 [76].
2. Power supply 120V GFCI.

OPTIONS (Check/specify appropriate options)

PREFIXES

_____ **Z** Acid Resistant Coated Fabricated Steel*

SUFFIXES

- _____ **-E** Acid Resistant Coated interior and exterior fabricated steel section. (Specify 'C' Dim. required) for recessed installation
- _____ **-HD** Heavy duty traffic cover rated at 10,000 lbs. [4536 Kg] maximum safe live load.
- _____ **-K** Anchor flange 1-3/4 [44] down from top and 2 [51] wide.
- _____ **-KC** Anchor flange 1-3/4 [44] down from top and 2 [51] wide with clamp collar.
- _____ **-STR** Storage tank on right hand side when facing the inlet.

*REGULARLY FURNISHED UNLESS OTHERWISE SPECIFIED

REV.	DATE: 10/25/12	C.N. NO. 124880
DWG NO. 310714	PRODUCT NO. Z1186-ST-100	