



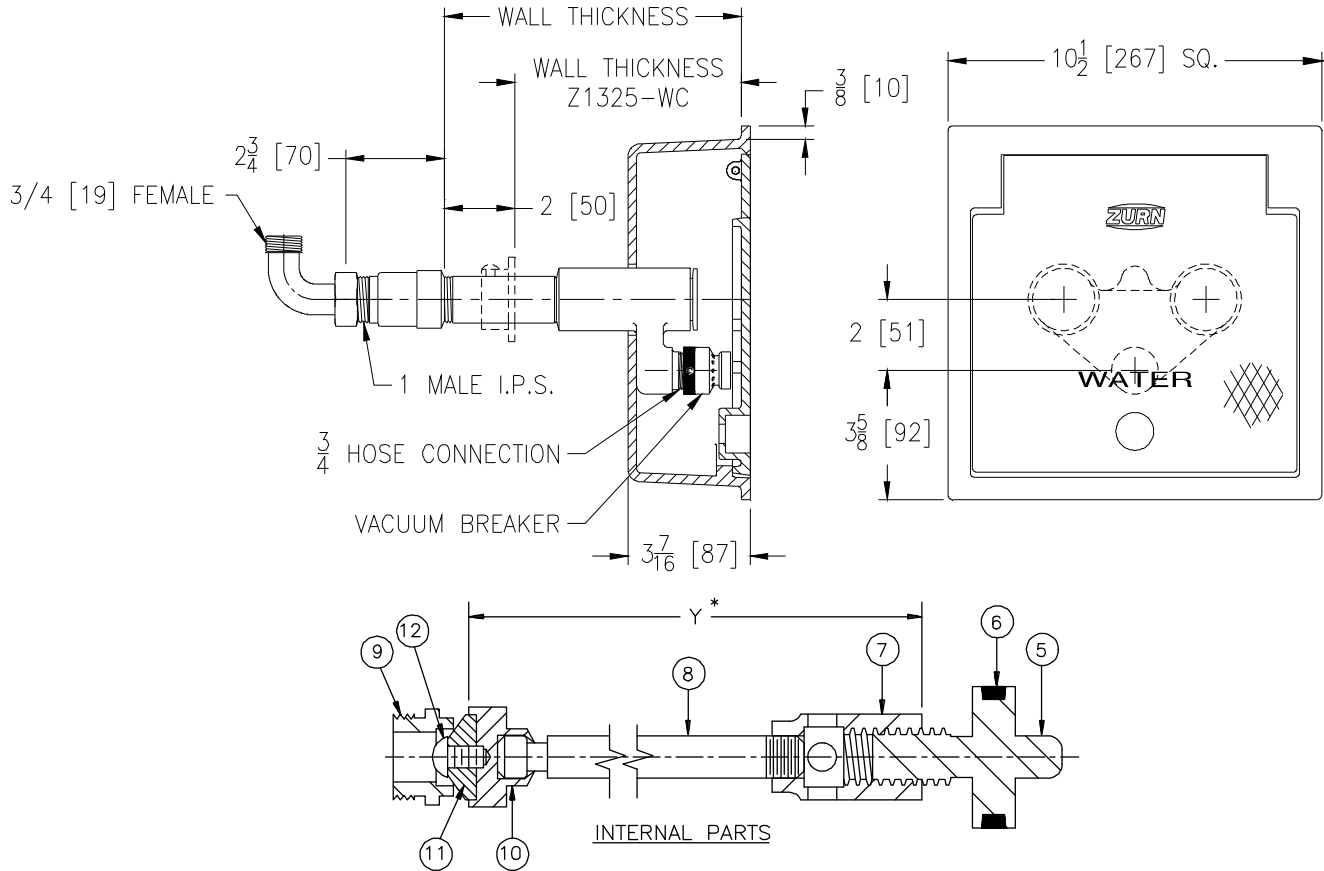
Z1325-VB-34UN

WALL HYDRANT ENCASED, VARI-TEMP, NON-FREEZE
W/ VACUUM BREAKER AND 3/4 IP 90° INLET ELBOW

SPECIFICATION SHEET

TAG _____

Dimensional Data (inches and [mm]) are Subject to Manufacturing Tolerances and Change Without Notice



Wall Thickness Inches [mm]	Approx. Wt. Lbs. [kg]
6, 8 [152, 203]	27 [12]
10, 12, 14 [254, 305, 356]	31 [14]
16, 18 [406, 457]	35 [16]
24 [610]	39 [18]

ENGINEERING SPECIFICATION: ZURN Z1325-VB-34UN

"Vari-Temp" combination hot and cold water, non-freeze, encased wall hydrant for flush installation. Complete with bronze casing, all bronze interior parts, non-turning operating rods with free-floating compression closure valves, replaceable bronze seat and seat washer, and 1" male straight IP inlet with 3/4" IP 90° inlet elbow with union nut and 3/4" [19mm] adapter vacuum breaker. Nickel bronze box and hinged cover with operating key lock and "WATER" cast on cover.

NOTE: When (-VB) vacuum breaker suffix is specified, the vacuum breaker must be manually tripped at the end of usage to facilitate drainage of the hydrant and maintain the non-freeze feature.

PARTS LIST

OPTIONS (Check/specify appropriate options)

SUFFIXES

- ___ -CL Cylinder Lock
- ___ -NW Narrow Wall
- ___ -PB Polished Bronze Face
- ___ -RA4 24 [610] Replacement Rod Assembly
- ___ -RK Hydrant Parts Repair Kit
- ___ -WC Wall Clamp

Item	Name	Quan.
<u>5</u>	<u>Operating Screw</u>	<u>2</u>
<u>6</u>	<u>O-Ring</u>	<u>2</u>
<u>7</u>	<u>Operating Coupling</u>	<u>2</u>
<u>8</u>	<u>Operating Rod</u>	<u>2</u>
<u>9</u>	<u>Removable Seat</u>	<u>2</u>
<u>10</u>	<u>Washer Guide</u>	<u>2</u>
<u>11</u>	<u>Washer (neoprene)</u>	<u>2</u>
<u>12</u>	<u>Screw</u>	<u>2</u>

* Regularly furnished unless otherwise specified.