



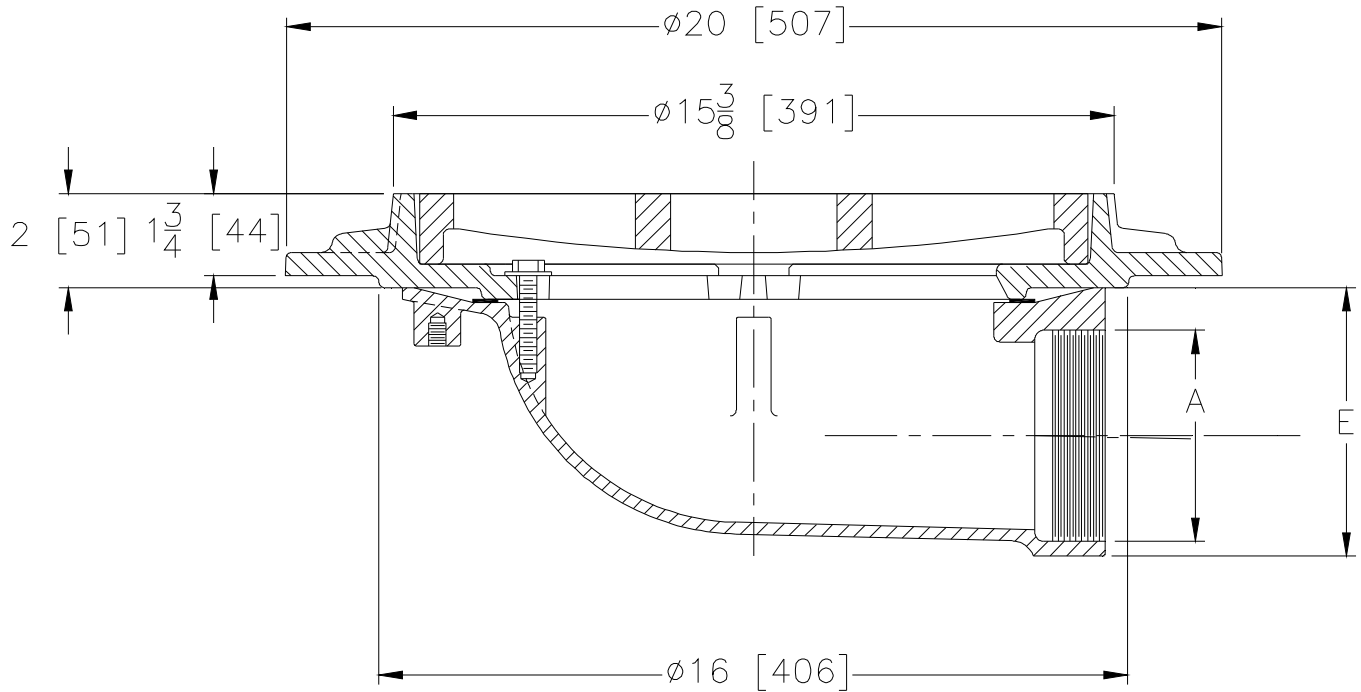
Z536-78

SPECIFICATION SHEET

15 [381] DIAMETER HEAVY-DUTY PARKING DECK DRAIN WITH SUPPORT FLANGE AND SIDE OUTLET

TAG _____

Dimensional Data (inches and [mm]) are Subject to Manufacturing Tolerances and Change Without Notice



A- Pipe Size In.	Approx. Wt. Lbs. [kg]	Grate Open Area Sq. In. [cm ²]
2-3-4-5-6 [51-76-102-127-152]	95 [43]	56 [361]

ENGINEERING SPECIFICATION: ZURN Z536-78
 15 [381] Diameter Parking Deck Drain, Dura-Coated cast iron body with side outlet, heavy-duty gasketed drain support flange, with heavy-duty slotted grate.

OPTIONS (Check/specify appropriate options)

PIPE SIZE

2, 3, 4 [51 thru 102]
 5, 6 [127, 152]

(Specify size/type) **OUTLET**

_____ IP Threaded
 _____ IP Threaded

E BODY HT. DIM.

5 3/4 [146]
 7 7/8 [200]

PREFIXES

- ___ Z D.C.C.I. Body and Top*
- ___ ZB D.C.C.I. Body with Polished Bronze Top (Add 3/16 [5] to 2 [51] Dim.)
- ___ ZN D.C.C.I. Body with Polished Nickel Bronze Top (Add 3/16 [5] to 2 [51] Dim.)

SUFFIXES

- ___ -C Underdeck Clamp
- ___ -DG Duresist Grate
- ___ -G Galvanized Cast Iron
- ___ -SA Stabilizer Assembly (See Z1036)
- ___ -VP Vandal-Proof Secured Top
- ___ -XJ Vertical Expansion Joint (See Z190)
(Use with IP Type Outlet)
- ___ -Y Sediment Bucket
- ___ -24 24 [610] Diameter Flange

Note: Standard concrete practices state that a minimum of 2" of concrete under the flange is required to support load on drain.

*REGULARLY FURNISHED UNLESS OTHERWISE SPECIFIED

REV.	DATE: 08/26/11	C.N. NO. 121998
DWG. NO. 307346		PRODUCT NO. Z536-78