

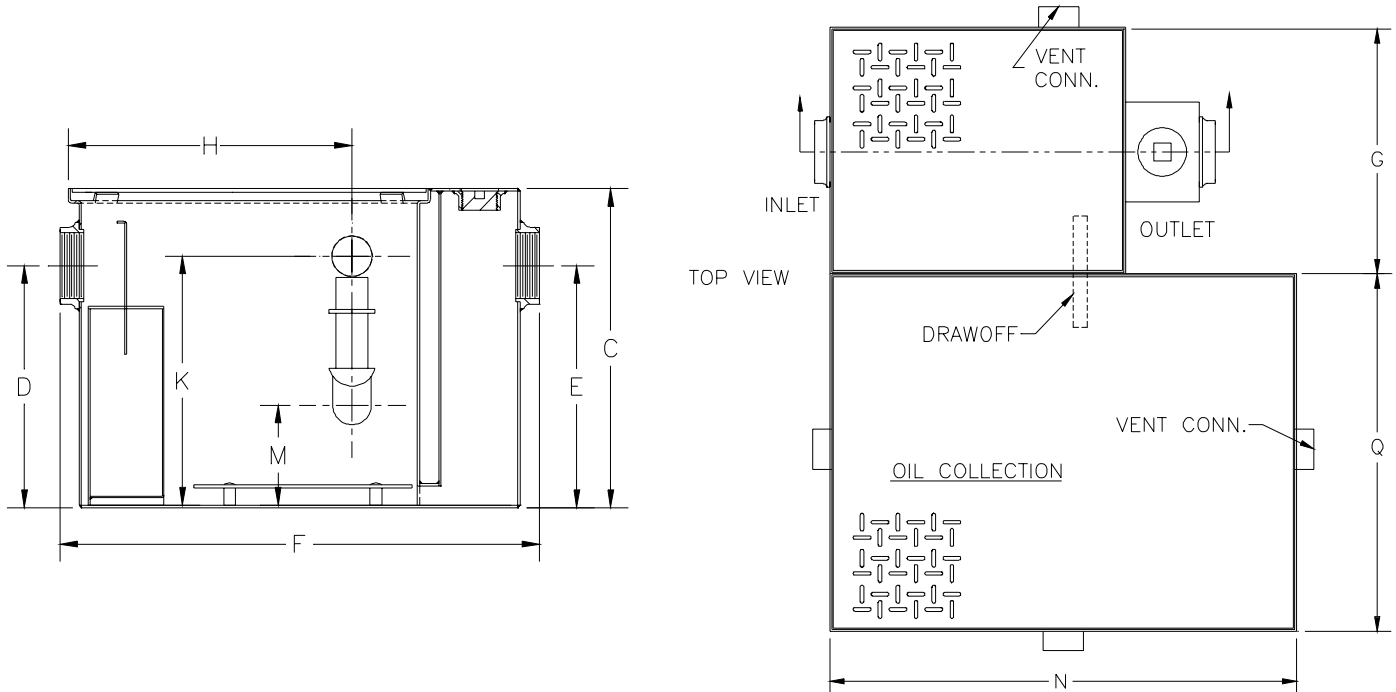


# Z-1186-83 OIL INTERCEPTOR W/ INTEGRAL STORAGE TANK

SPECIFICATION SHEET

TAG \_\_\_\_\_

Dimensional Data (inches and [ mm ]) are Subject to Manufacturing Tolerances and Change Without Notice



SIZE	Inlet/Outlet Size**	Flow Rate G.P.M.	Water Capacity Gal.[L]	Approx. Wt. Lbs.[kg]	Oil Storage Tank Capacity Gal.[L]
300	2 [51]	10 [38]	7 [26]	56 [25]	69 [261]
400	2 [51]	15 [57]	9 [34]	77 [35]	69 [261]
500	3 [76]	20 [76]	10 [38]	106 [48]	69 [261]
600	3 [76]	25 [95]	16 [61]	116 [53]	157 [594]
700	3 [76]	35 [132]	21 [79]	140 [47]	157 [594]
800	3 [76]	50 [189]	30 [114]	171 [78]	144 [545]

R = DEPTH OF STORAGE TANK

Dimensions in inches										
SIZE	C	D/E	F	G	H	K	M	N	Q	R
300	13 5/8 [346]	8 1/8 [206]	22 5/8 [575]	14 [356]	11 5/8 [295]	10 5/8 [270]	4 5/16 [110]	30 [762]	12 [305]	55 [1397]
400	14 [356]	8 1/4 [210]	22 3/4 [578]	14 1/8 [359]	11 5/8 [295]	11 [279]	4 7/16 [113]	30 [762]	12 [305]	55 [1397]
500	15 1/2 [394]	9 3/8 [238]	24 5/8 [625]	16 3/4 [425]	13 1/4 [337]	12 1/2 [318]	5 9/16 [141]	30 [762]	12 [305]	55 [1397]
600	18 1/4 [464]	11 3/4 [298]	27 1/2 [699]	17 1/4 [438]	16 [406]	15 1/4 [387]	6 1/4 [159]	50 3/4 [1289]	15 [381]	61 [1550]
700	19 3/4 [483]	12 1/2 [318]	29 7/8 [759]	19 7/8 [505]	16 3/8 [416]	16 3/4 [425]	6 7/16 [164]	50 3/4 [1289]	15 [381]	61 [1550]
800	24 1/4 [616]	14 1/4 [362]	31 3/8 [797]	22 1/2 [572]	17 1/4 [438]	21 1/4 [540]	8 3/16 [208]	50 3/4 [1289]	15 [381]	61 [1550]

**ENGINEERING SPECIFICATION:** ZURN Z-1186-83 Acid Resistant Coated interior and exterior fabricated steel oil interceptor, with bronze cleanout plug and visible double wall trap seal, removable combination pressure equalizing/flow diffusing baffle and sediment bucket, horizontal baffle, oil drawoff, vent connections, secured gasketed non-skid cover, complete with flow control fitting and integral storage tank. Regularly furnished with inlet and outlet in high position.

**OPTIONS** (Check/specify appropriate options)

**PREFIXES**

- **Z-** Acid Resistant Coated Fabricated Steel\*
- \*\* Inlet and outlet sizes shown indicate standard operating sizes and flow control settings. Size #300 and #400 will have 3 [76] connections reduced to 2 [51] as standard. Size #500 thru #800 will have connections reduced to 3 [76] as standard. If changed, flow control and air relief by-pass must be adjusted accordingly.

<b>REV. B</b>	<b>DATE: 3/27/98</b>	<b>C.N. NO. 80089</b>
<b>DWG NO. P-14182</b>	<b>PRODUCT NO. Z-1186-83</b>	

\*REGULARLY FURNISHED UNLESS OTHERWISE SPECIFIED