



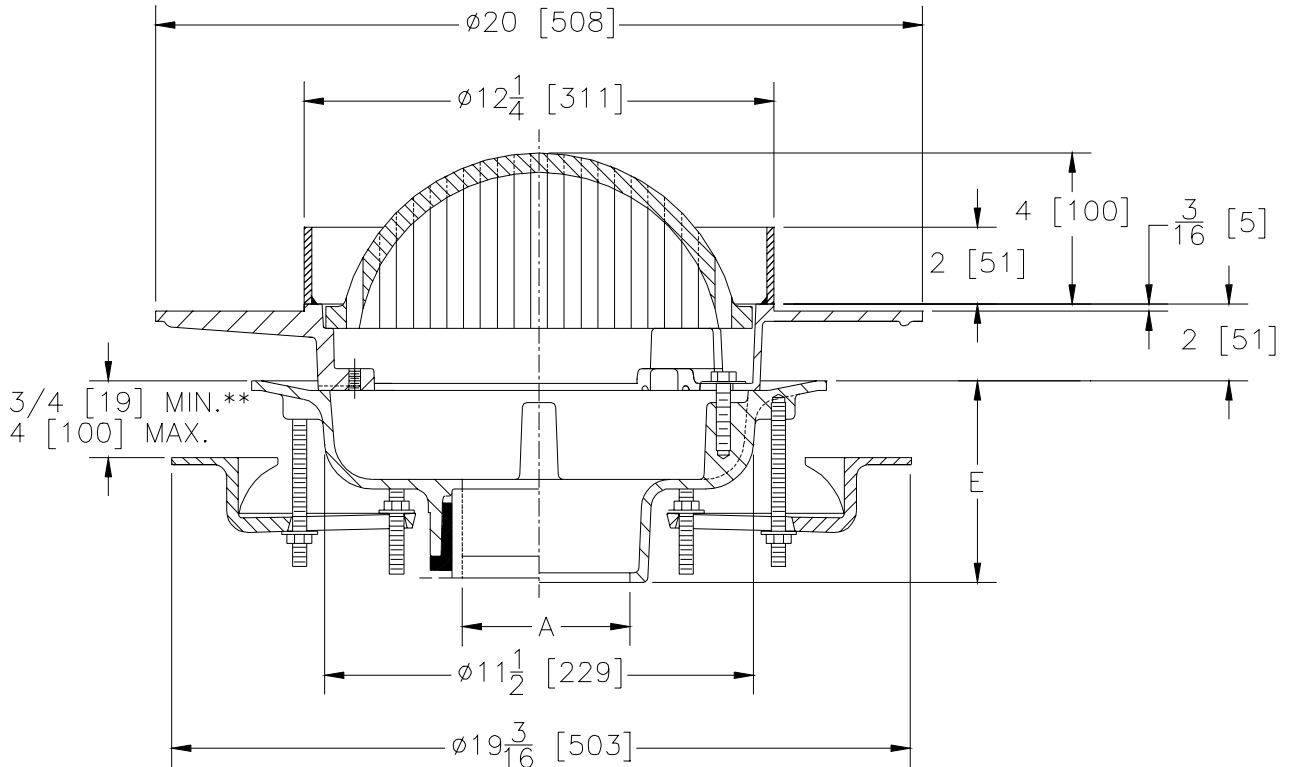
Z-532-77

12" DIAMETER WIDE FLANGE FLOOR DRAIN

SPECIFICATION SHEET

TAG _____

Dimensional Data (inches and [mm]) are Subject to Manufacturing Tolerances and Change Without Notice



A- Pipe Size In.	Approx. Wt. Lbs.	Grate Open Area Sq. In.
2-3-4-5-6 [50-75-100-127-152]	54 [24]	29 [187]
8-10 [203-254]	56 [25]	

ENGINEERING SPECIFICATION: ZURN Z-532-77 12" [305]
 Diameter wide flange floor drain, Dura-Coated cast iron body with bottom outlet, seepage pan and combination membrane flashing clamp and latex troweling flange with slotted aluminum dome grate with 2" external water dam and underdeck clamp.

OPTIONS (Check/specify appropriate options)

OUTLET (Specify type)

- _____ **IC** Inside Caulk
- _____ **IG** Inside Caulk w/Sealtrol Gskt.
- _____ **IP** Threaded
- _____ **NH** No-Hub
- _____ **NL** Neo-Loc

PIPE SIZE (Specify size)

- _____ 2 thru 6,8,10 [50 thru 152, 203, 254]
- _____ 2,3,4,6 [50, 75, 100, 152]
- _____ 2 thru 6,8,10 [50 thru 152, 203, 254]
- _____ 2 thru 6,8,10 [50 thru 152, 203, 254]
- _____ 2 thru 4 [50 thru 100]

'E' BODY HT. DIMENSION

- _____ 5-1/4 [133]
- _____ 5-1/4 [133]
- _____ 3-3/4 [95]
- _____ 5-1/4 [133]
- _____ 4-1/2 [114]

PREFIXES

- _____ **Z-** D.C.C.I. Body and Aluminum Dome Grate*

SUFFIXES

- _____ **-G** Galvanized Cast Iron
- _____ **-VP** Vandal Proof Secured Top

*REGULARLY FURNISHED UNLESS OTHERWISE SPECIFIED

REV.	DATE: 11/29/00	C.N. NO. 86205
DWG. NO. P-14808 PRODUCT NO. Z-532-77		