



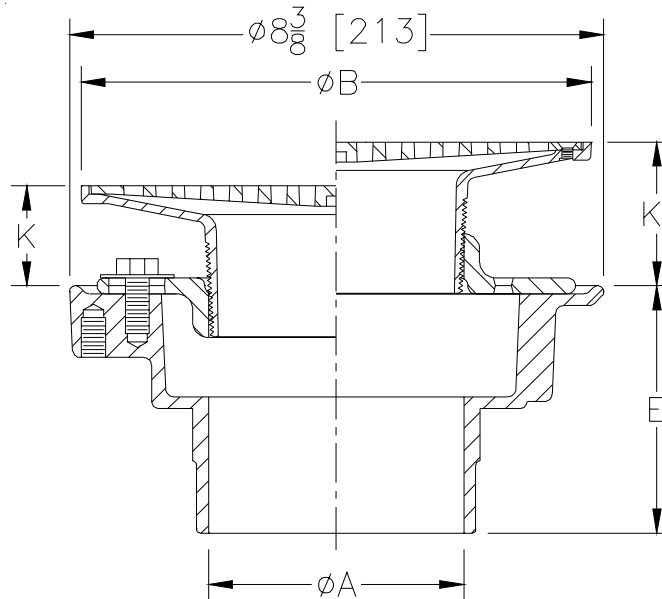
# Z415B-91

## NO-HUB BODY ASSEMBLY W/ "TYPE B" STRAINER AND SEEPAGE SLOTS

SPECIFICATION SHEET

TAG \_\_\_\_\_

Dimensional Data (inches and [ mm ]) are Subject to Manufacturing Tolerances and Change Without Notice



Dimensions In Inches						Approx. Wt. Lbs. [ Kg ]	Strainer Open Area Sq. In. [ Cm <sup>2</sup> ]
A - Pipe Size	B-Strainer Dia.	K		K'			
		Min.	Max.	Min.	Max.		
2-3 [51-76]	5 [127]	1/2 [13]	1 5/8 [41]	1 3/8 [35]	2 3/8 [60]	11 [5]	8 [52]
2-3-4 [51-76-102]	6 [152]	3/4 [19]	1 3/4 [44]	1 5/8 [41]	2 3/4 [70]	13 [6]	9 [58]
2-3-4 [51-76-102]	7 [178]	1 [25]	2 1/4 [57]	2 [51]	3 1/8 [79]	14 [6]	12 [77]
3-4 [76-102]	8 [203]	1 1/8 [29]	2 1/4 [57]	2 [51]	3 1/8 [79]	16 [7]	18 [116]
6 [152]	8 [203]	1 1/8 [29]	2 1/4 [57]	2 [51]	3 1/8 [79]	18 [8]	18 [116]
6 [152]	10 [254]	1 5/8 [41]	2 5/8 [67]	2 5/8 [67]	3 1/2 [89]	22 [10]	26 [168]

**ENGINEERING SPECIFICATION:** ZURN ZN415B-91 Floor and shower drain, Dura-Coated cast iron no-hub body with bottom outlet, combination invertible membrane clamp and adjustable collar with seepage slots and "TYPE B" polished nickel bronze strainer.

**OPTIONS** (Check/specify appropriate options)

**PIPE SIZE**

2 thru 4 [51 thru 102]

(Specify size) **OUTLET**

\_\_\_\_\_ NH No-Hub

**'E' BODY HT. DIM.**

3 7/8 [98]

**PREFIXES**

- \_\_\_\_\_ ZB D.C.C.I. Body Assembly w/ Polished Bronze Top
- \_\_\_\_\_ ZN D.C.C.I. Body Assembly w/ Polished Nickel Bronze Top\*
- \_\_\_\_\_ ZS D.C.C.I. Body Assembly w/ 6 [152] Dia. Stainless Steel Top

**SUFFIXES**

- \_\_\_\_\_ -AA All Acid Resisting Epoxy
- \_\_\_\_\_ -AR Acid Resisting Epoxy Coated Cast Iron
- \_\_\_\_\_ -G Galvanized Cast Iron
- \_\_\_\_\_ -HD Heavy-Duty Grate
- \_\_\_\_\_ -P Trap Primer Connection  
(Specify 1/2 [13] or 3/4 [19])
- \_\_\_\_\_ -U 1 - 3 [25 - 76] High Extension Adapter
- \_\_\_\_\_ -V Backwater Valve
- \_\_\_\_\_ -VP Vandal-Proof Secured Top
- \_\_\_\_\_ -Y Sediment Bucket

\*REGULARLY FURNISHED UNLESS OTHERWISE SPECIFIED

<b>REV. A</b>	<b>DATE: 03/01/04</b>	<b>C.N. NO. 91975</b>
<b>DWG. NO. P-14673</b>	<b>PRODUCT NO. Z415B-91</b>	