



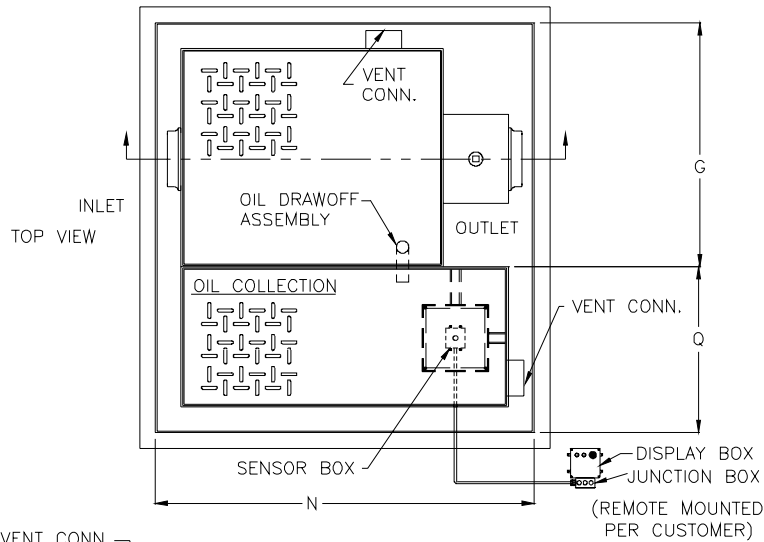
# Z1188-128

## LARGE CAPACITY OIL INTERCEPTOR W/ INTEGRAL STORAGE TANK, OIL LEVEL SENSOR, & DOUBLE WALL CONTAINMENT

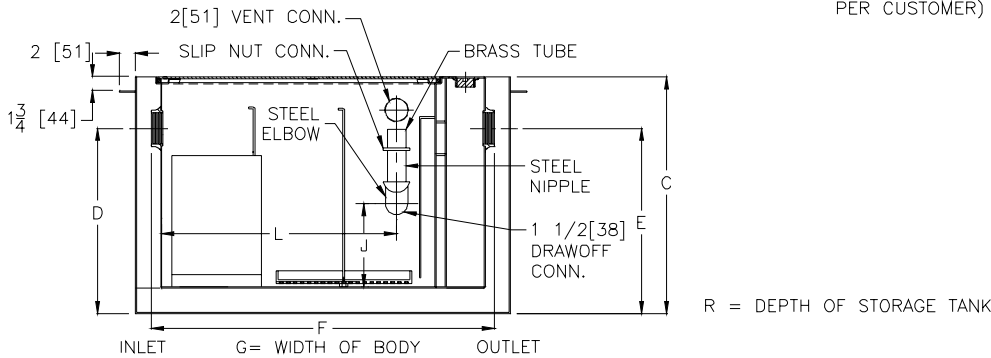
SPECIFICATION SHEET

TAG \_\_\_\_\_

Dimensional Data (inches or [mm]) are Subject to Manufacturing Tolerances and Change Without Notice



Flow Rate GPM [L/Min.]	Oil Storage Tank Cap. Gal. [L]	No. of Covers	
		Trap	Tank
100 [379]	50 [189]	1	1



Flow Rate GPM [L] Min	Inlet/ Outlet Size**	Water Capacity Gal. [L]	App. Wt. Lbs. [Kg]	Dimensions In Inches								
				C	D/E	F	G	J	L	N	Q	R
100 [378]	4 [102]	110 [416]	1300 [590]	33 [838]	26 [661]	42 3/4 [1086]	36 5/8 [930]	10 [254]	30 1/8 [765]	47 1/4 [1200]	34 [864]	33 [838]

**ENGINEERING SPECIFICATION:** ZURN Z1188-128 Large capacity acid resistant coated interior and exterior fabricated steel oil interceptor, with bronze cleanout plug, visible double wall trap seal, removable combination pressure equalizing/flow diffusing baffle and sediment bucket, horizontal baffle, adjustable oil draw-off, vent connections, integral storage tank and double wall containment with anchor flange. Secured gasketed non-skid cover complete with flow control fitting. With a fiberglass sensor box containing a float oil level sensor, fiberglass display box with one green power light, one red oil level light, audible alarm and junction box. Regularly furnished with inlet and outlet in high position.

**OPTIONS** (Check/specify appropriate options)

**PREFIXES**

\_\_\_\_\_ Z Acid Resistant Coated Fabricated Steel\*

**SUFFIXES**

- \_\_\_\_\_ -E Acid Resistant Coated interior and exterior fabricated steel extension section. (Specify 'C' Dim. required) for recessed installation.
- \_\_\_\_\_ -HD Heavy duty traffic cover rated at 10,000 lbs [4536] kg. maximum safe live load.
- \_\_\_\_\_ -KC Anchor flange 1 3/4 [44] down from top and 2 [51] wide with clamp collar.

Note: 1. Power supply 120V GFCI

REV.	DATE: 9/13/04	C.N. NO. 92540	
DWG. NO. P-15080	PRODUCT NO. Z1188-128		

\*REGULARLY FURNISHED UNLESS OTHERWISE SPECIFIED