



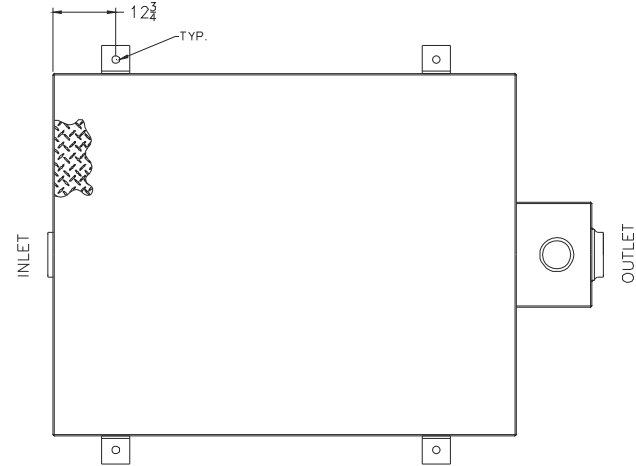
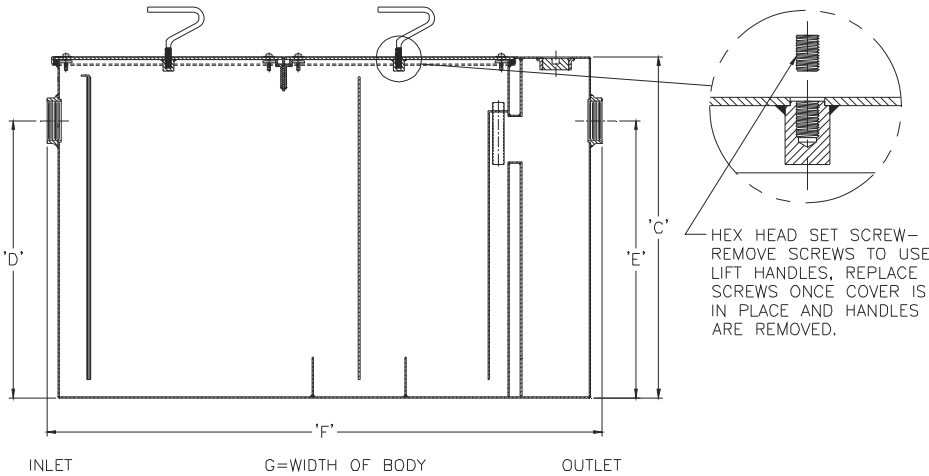
Z1172-172

1300 LARGE CAPACITY GREASE INTERCEPTOR W/CUSTOM ANCHOR POINTS

SPECIFICATION SHEET

TAG _____

Dimensional Data (inches and [mm]) are Subject to Manufacturing Tolerances and Change Without Notice



Note: Typ. 3 X 3 X 1/4 iron w/ 1/2" thru hole

Size	Inlet/ Outlet Size	Flow Rate G.P.M [L]	Capacity		No. of Covers	Approx. Wt. Lbs. [kg]	Dimensions in Inches			
			Water Gal. [L]	Grease Lbs. [kg]			C	D/E	F	G
1300	4 [102]	200 [756]	270 [1021]	400 [182]	2	1016 [461]	35-1/2 [902]	29-7/8 [759]	61 [1549]	43-5/8 [1108]

ENGINEERING SPECIFICATION: ZURN Z1172-172

Large capacity Acid Resistant Coated interior and exterior fabricated steel grease interceptor, rated at 200 GPM and 400 Lbs. grease capacity, with internal air relief by-pass, bronze cleanout plug (which can be used as a sampling port) and visible double wall trap seal with removable pressure equalizing/flow diffusing baffle. Gasketed non-skid secured cover with removable lift handles, complete with flow control fitting. Regularly furnished with inlet and outlet in high position. (4) A36 anchor points will be welded to the base of the interceptor body to assist in mounting. Anchor points are not to bear weight, but only to prevent lateral movement. Hardware to secure anchor points provided by others

OPTIONS (Check/specify appropriate options)

PREFIXES

- ___ Z Acid Resistant Coated Fabricated Steel*
- ___ ZS All Type 304 Fabricated Stainless Steel

SUFFIXES

- ___ -AL Aluminum Cover
- ___ -E Acid Resistant Coated Interior and exterior fabricated steel extension section. (Specify 'C' Dim. required) for recessed installation.
- ___ -HD Heavy duty traffic cover rated at 10,000 lbs. [4536 kg] maximum safe live load. An increase 'C' dim. is required when -HD option is specified. (See -HD option specification sheet)
- ___ -K Anchor flange 1-3/4 [44] down from top and 2 [51] wide. (A 3 [76] minimum Extension Height is required when Anchor Flange (-K) Option is specified.)
- ___ -KC Anchor flange 1-3/4 [44] down from top and 2 [51] wide with clamp collar. (A 3 [76] minimum Extension Height is required when Anchor Flange (-KC) Option is specified.)
- ___ -L Angle type (Z1108-L) flow control device.
- ___ -PW Plug Wrench

* Regularly furnished unless otherwise specified.

Zurn Industries, LLC | Specification Drainage Operation
1801 Pittsburgh Avenue, Erie, PA U.S.A. 16502 · Ph. 855-663-9876, Fax 814-454-7929
In Canada | **Zurn Industries Limited**
3544 Nashua Drive, Mississauga, Ontario L4V 1L2 · Ph. 905-405-8272, Fax 905-405-1292
www.zurn.com

Rev. A
Date: 04/18/14
C.N. No. 130841
Prod. | Dwg. No. Z1172-172