



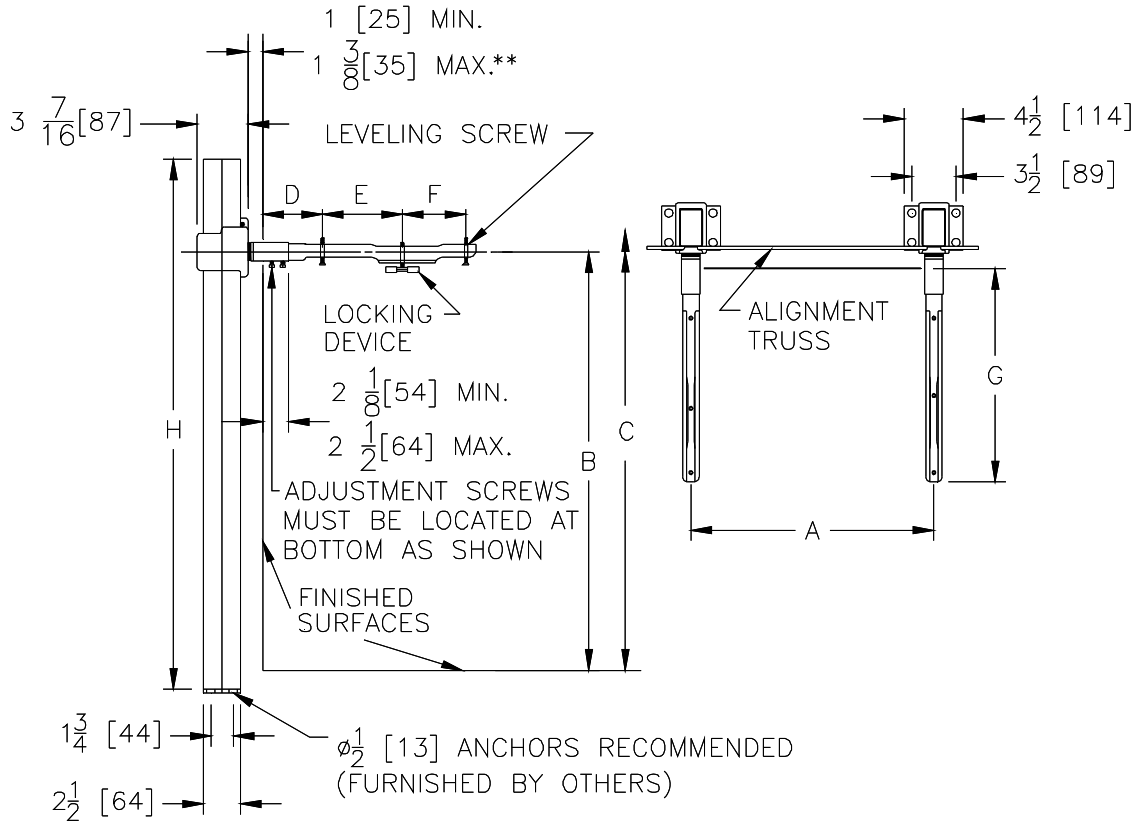
Z1231-101

CONCEALED ARM SYSTEM WALL LAVATORIES W/ POWDER COATED UPRIGHTS

SPECIFICATION SHEET

TAG _____

Dimensional Data (inches and [mm]) are Subject to Manufacturing Tolerances and Change Without Notice



** WITH STANDARD SLEEVE LENGTH OF 4 [102]

Product No.	Approx. Wt. Lbs. [kg]
Z1231	45 [20]

ENGINEERING SPECIFICATION: ZURN Z1231-101 Lavatory support system with concealed arms. Complete with powder coated rectangular steel uprights with welded feet, cast iron adjustable headers, concealed arms, steel sleeves, alignment truss, and mounting fasteners.

OPTIONS (Check/specify appropriate options)

PREFIXES

___ Z Powder Coated System with Concealed Arms*

SUFFIXES

- ___ -AL Adapter Lug
- ___ -CB Carrier Bank
- ___ -CU Floor to Ceiling Upright (Specify Height Required)
- ___ -D Back to Back System
- ___ -E2 Concealed Arm Escutcheons 2 [51] Long
- ___ -E4 Concealed Arm Escutcheons 4 [102] Long
- ___ -E6 Concealed Arm Escutcheons 6 [152] Long
- ___ -SL Sleeve Length Over 4 [102] (Specify Length)
- ___ -WS Wall Support Valve Plate (Specify Valve Name and Number)
- ___ -79 Paraplegic Rough-in

Note: Dimensional data for letter dimensions depends upon fixture type and manufacturer. See Zurn Carrier/Fixture Rough-In information at www.zurn.com for specific rough-in dimensions

* Regularly furnished unless otherwise specified.