



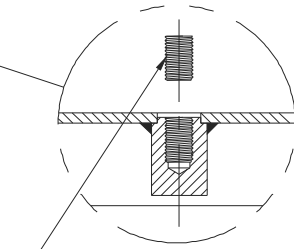
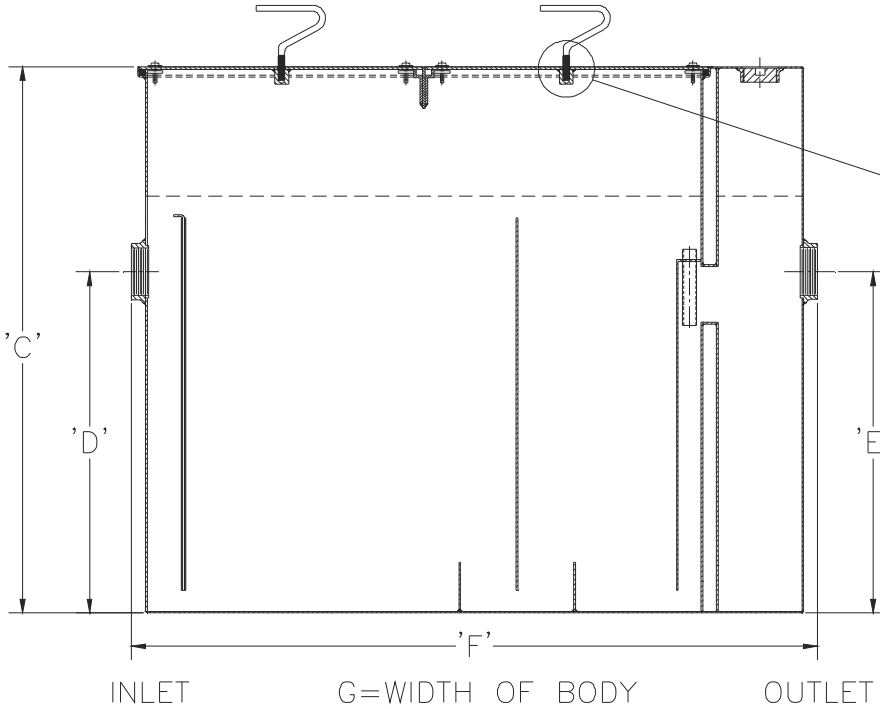
Z1172-178

SIZE 1000 LARGE CAPACITY GREASE INTERCEPTOR WITH 8-3/4 [222] EXTENSION.

SPECIFICATION SHEET

TAG _____

Dimensional Data (inches and [mm]) are Subject to Manufacturing Tolerances and Change Without Notice



HEX HEAD SET SCREW— REMOVE SCREWS TO USE LIFT HANDLES, REPLACE SCREWS ONCE COVER IS IN PLACE AND HANDLES ARE REMOVED.

** Location of inlet must be maintained at the 'D' dimension listed for each size.

Size	Inlet/Outlet Sizes	Flow Rate G.P.M [L.P.M]	Capacity		Approx. Wt. Lbs. [kg]	Dimensions in Inches [mm]			
			Water Gal. [L]	Grease Lbs. [kg]		C	D/E	F	G
1000	4 [102]	100 [416]	110 [416]	200 [91]	470 [213]	35-3/4 [908]	23-1/2 [597]	42-3/4 [1086]	33-5/8 [854]

ENGINEERING SPECIFICATION: ZURN Z1172-178

Large capacity Acid Resistant Coated interior and exterior fabricated steel grease interceptor, rated at 100 GPM and 200 Lbs. grease capacity, with internal air relief by-pass, bronze cleanout plug and visible double wall trap seal with removable pressure equalizing/flow diffusing baffle. Gasketed non-skid secured cover with removable lift handles, complete with flow control fitting. Acid resistant coated interior and exterior fabricated steel extension section built integral to the interceptor body. Regularly furnished with inlet and outlet in high position.

OPTIONS (Check/specify appropriate options)

PREFIXES

- ___ Z Acid Resistant Coated Fabricated Steel*
- ___ ZS All Type 304 Fabricated Stainless Steel

SUFFIXES

- ___ -AL Aluminum cover
- ___ -HD Heavy duty traffic cover rated at 10,000 lbs. [4536 kg.] maximum safe live load.
- ___ -K Anchor flange 1-3/4 [44] down from top and 2 [51] wide. No additional extension is required.
- ___ -KC Anchor flange 1-3/4 [44] down from top and 2 [51] wide with clamp collar. No additional extension is required.
- ___ -L Angle type (Z1108-L) flow control device.

* Regularly furnished unless otherwise specified.