



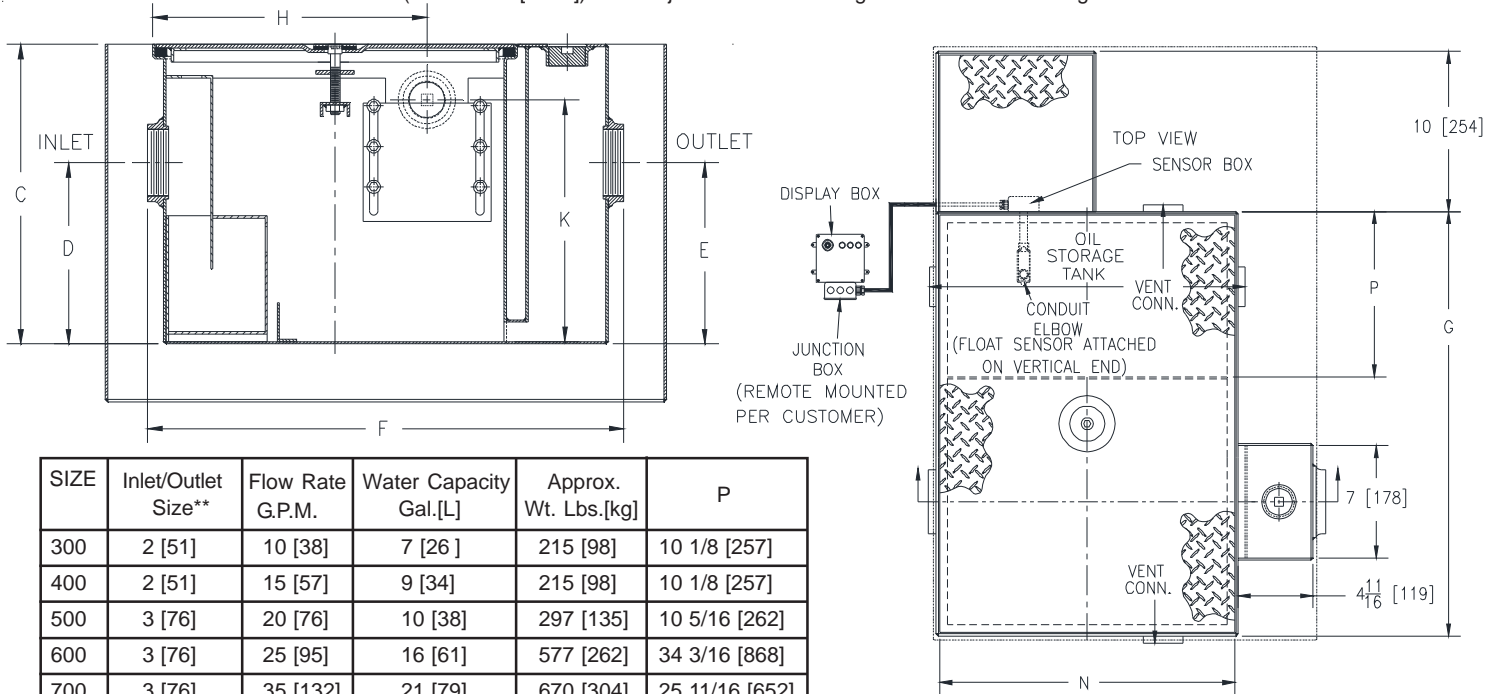
Z1186-ST-109

OIL INTERCEPTOR
W/ INTEGRAL STORAGE TANK, DOUBLE WALL
CONTAINMENT, AND OIL LEVEL SENSOR

SPECIFICATION SHEET

TAG _____

Dimensional Data (inches and [mm]) are Subject to Manufacturing Tolerances and Change Without Notice



SIZE	Inlet/Outlet Size**	Flow Rate G.P.M.	Water Capacity Gal.[L]	Approx. Wt. Lbs.[kg]	P
300	2 [51]	10 [38]	7 [26]	215 [98]	10 1/8 [257]
400	2 [51]	15 [57]	9 [34]	215 [98]	10 1/8 [257]
500	3 [76]	20 [76]	10 [38]	297 [135]	10 5/16 [262]
600	3 [76]	25 [95]	16 [61]	577 [262]	34 3/16 [868]
700	3 [76]	35 [132]	21 [79]	670 [304]	25 11/16 [652]
800	3 [76]	50 [189]	30 [114]	1067 [484]	48 1/4 [1226]

Dimensions in inches [mm]								Oil Storage Tank Capacity Gal.[L]	No. of Covers
SIZE	C	D/E	F	G	H	K	N		
300	17 [432]	8 1/4 [210]	23 1/16 [586]	23 9/16 [598]	12 1/16 [306]	11 [279]	16 7/8 [429]	6 [22]	2
400	17 [432]	8 1/4 [210]	23 1/16 [586]	23 9/16 [598]	5 11/16 [144]	11 [279]	16 7/8 [429]	6 [22]	2
500	18 1/2 [470]	9 3/8 [238]	25 1/16 [637]	26 1/2 [673]	14 3/16 [360]	12 1/2 [318]	18 7/8 [479]	8 [30]	2
600	21 1/4 [540]	11 3/4 [298]	35 7/32 [895]	50 7/8 [1292]	19 1/4 [489]	15 1/4 [387]	29 [737]	55 [208]	3
700	22 3/4 [578]	12 7/16 [316]	43 7/16 [1103]	45 [1143]	23 1/4 [591]	16 3/4 [425]	37 [940]	55 [208]	3
800	27 1/4 [692]	14 3/16 [360]	49 7/16 [1256]	70 1/8 [1781]	26 1/4 [667]	21 1/4 [540]	43 [1092]	125 [473]	4

ENGINEERING SPECIFICATION: ZURN Z1186-ST-109

Acid Resistant Coated interior and exterior fabricated steel oil interceptor, with bronze cleanout plug, visible double wall trap seal, removable combination pressure equalizing/flow diffusing baffle and sediment bucket, adjustable oil draw-off gate plate, vent connections and left-hand integral storage tank. Complete with double-wall containment, secured gasketed non-skid cover, and flow control fitting. Fiberglass sensor box contains a float oil level sensor. Fiberglass display box contains one green power light, one red oil light, audible alarm and junction box. Regularly furnished with inlet and outlet in high position. Note: location of outlet from bottom of interceptor cannot be changed.

OPTIONS (Check/specify appropriate options)

PREFIXES

_____ **Z** Acid Resistant Coated Fabricated Steel*

SUFFIXES

_____ **-HD** Heavy duty traffic cover rated at 10,000 lbs. maximum safe live load

_____ **-STR** Storage tank on right hand side when facing the inlet.

Note:

1. Double wall construction will extend the overall length and width of the unit by 3 [76] per side and increase the overall depth by 3 [76].
2. Power supply 120V GFCI.

** Inlet and outlet sizes shown indicate standard operating sizes and flow control settings. Size #300 and #400 will have 3 [76] connections reduced to 2 [51] as standard. Size #700 and #800 will have 4 [100] connections reduced to 3 [76] as standard.

* Regularly furnished unless otherwise specified.