



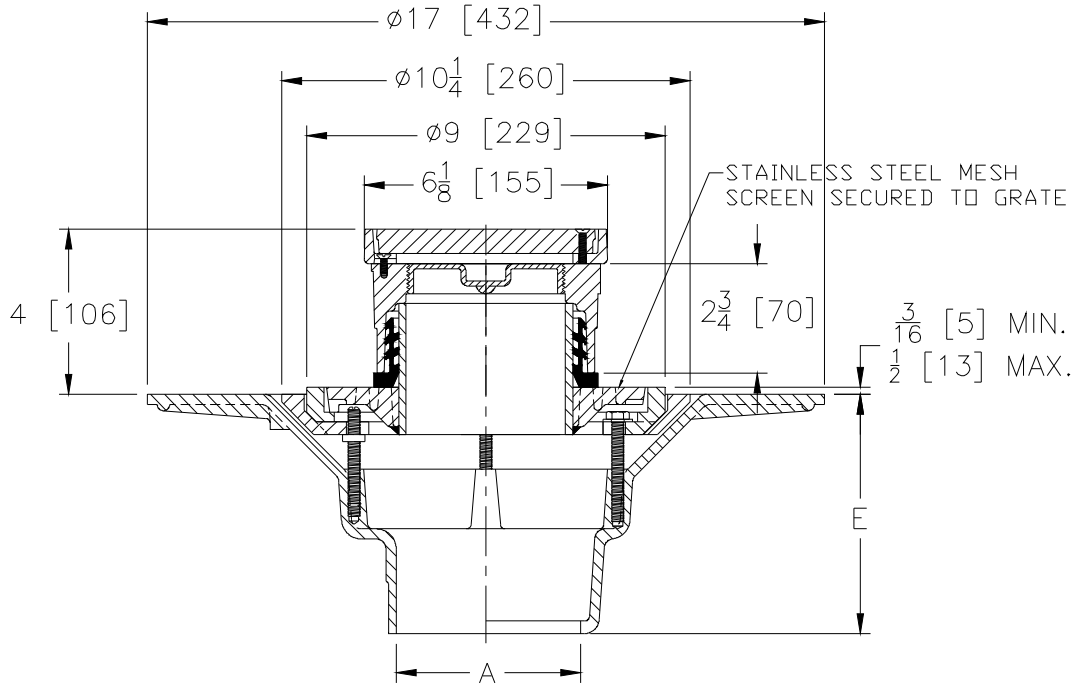
Z531-80

9 [229] DIAMETER ADJUSTABLE FRAME WIDE FLANGE MEDIUM-DUTY DECK DRAIN W/ TOP CLEANOUT

SPECIFICATION SHEET

TAG _____

Dimensional Data (inches and [mm]) are Subject to Manufacturing Tolerances and Change Without Notice



ENGINEERING SPECIFICATION: ZURN Z531-80

9" [229mm] Diameter adjustable frame wide flange deck drain, Dura-Coated cast iron body with 10-1/4" [260mm] diameter latex troweling flange and combination adjustable latex troweling-edge-form and membrane flashing clamp with flat grate with standpipe. Complete with Z1402 Heavy-Duty floor cleanout, and 4" [102mm] NL gasket.

A- Pipe Size In. [mm]	Approx. Wt. Lbs. [kg]
2,3,4 [51,76,102]	64 [29]

OPTIONS (Check/specify appropriate options)

PIPE SIZE

2,3,4 [51,76,102]
2,3,4 [51,76,102]
2,3,4 [51,76,102]
2,3,4 [51,76,102]
2,3,4 [51,76,102]

(Specify size/type) OUTLET

___ IC Inside Caulk
___ IG Inside Gasket
___ IP Threaded
___ NH No-Hub
___ NL Neo-Loc

'E' BODY HT. DIM.

6 [152]
6 [152]
4-1/2 [114]
6 [152]
5-3/8 [136]

PREFIXES

___ Z D.C.C.I. Assemblies and Cover*
___ ZB D.C.C.I. Assemblies w/ Light-Duty Polished Bronze Top
___ ZN D.C.C.I. Assemblies w/ Light-Duty Polished Nickel Bronze Top
___ ZS D.C.C.I. Assemblies w/ Heavy-Duty Polished Stainless Steel Top

SUFFIXES

___ -BP Bronze Plug
___ -C Underdeck Clamp
___ -CM Carpet Marker
___ -G Galvanized Cast Iron
___ -TC Neo-Loc Test Cap Gasket
(2,3,4 [51,76,102] NL Bottom Outlet Only)
___ -VP Vandal-Proof Secured Top

* Regularly furnished unless otherwise specified.