



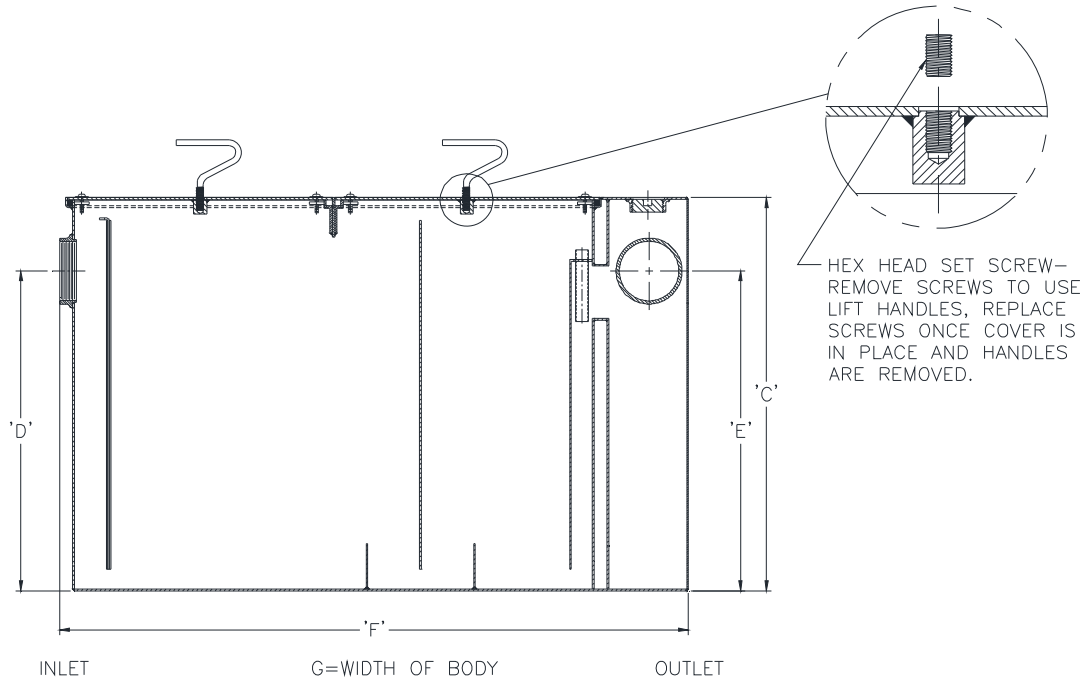
Z1172-187

SIZE 1700 LARGE CAPACITY GREASE INTERCEPTOR W/ 6 [152] INLET & SIDE OUTLET

SPECIFICATION SHEET

TAG _____

Dimensional Data (inches and [mm]) are Subject to Manufacturing Tolerances and Change Without Notice



Size	Inlet/Outlet Size In. [mm]	Flow Rate G.P.M. [LPM]	Capacity		No. of Covers	Approx. Wt. Lbs. [kg]	Dimensions in Inches [mm]			
			Water Gal. [L]	Grease Lbs. [kg]			C	D/E	F	G
1700	6 [152]	400 [1514]	1095 [4145]	800 [363]	3	2440 [1107]	54 -1/4 [1378]	47-5/8 [1210]	94 [2388]	67 [1702]

ENGINEERING SPECIFICATION: ZURN Z1172-187

Large capacity Acid Resistant Coated interior and exterior fabricated steel grease interceptor, rated at 400 GPM [1514 LPM] and 800 Lbs. [363 kg] grease capacity, with internal air relief by-pass, bronze cleanout plug (which can be used as a sampling port) and visible double wall trap seal with removable pressure equalizing/flow diffusing baffle. Gasketed non-skid secured cover with removable lift handles, complete with flow control fitting. Regularly furnished with inlet and side outlet in high position.

OPTIONS (Check/specify appropriate options)

PREFIXES

- ___ Z Acid Resistant Coated Fabricated Steel*
- ___ ZS All Type 304 Fabricated Stainless Steel

SUFFIXES

- ___ -AL Aluminum Cover
- ___ -E Acid Resistant Coated Interior and exterior fabricated steel extension section. (Specify 'C' Dim. required) for recessed installation.
- ___ -HD Heavy duty traffic cover rated at 10,000 lbs. [4536 kg] maximum safe live load. An increase 'C' dim. is required when -HD option is specified. (See -HD option specification sheet)
- ___ -K Anchor flange 1-3/4 [44] down from top and 2 [51] wide. (A 3 [76] minimum Extension Height is required when Anchor Flange (-K) Option is specified.)
- ___ -KC Anchor flange 1-3/4 [44] down from top and 2 [51] wide with clamp collar. (A 3 [76] minimum Extension Height is required when Anchor Flange (-KC) Option is specified.)
- ___ -L Angle type (Z1108-L) flow control device.
- ___ -PW Plug Wrench
- ___ -RE Recessing receiver enclosed type for recessed installation. Furnished with gasketed non-skid cover with removable lift handles.

* Regularly furnished unless otherwise specified.