



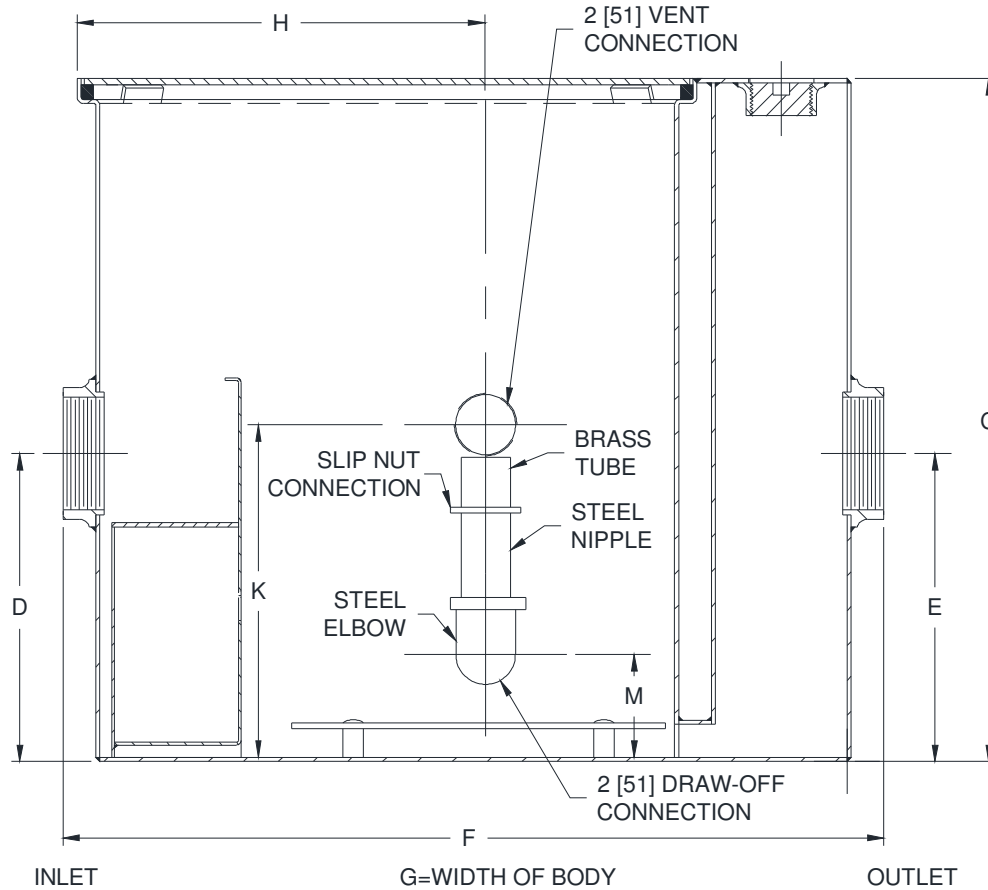
Z1186-141

SIZE 300 OIL INTERCEPTOR WITH 4 [102] INLET/OUTLET
& CUSTOM EXTENSION

SPECIFICATION SHEET

TAG _____

Dimensional Data (inches and [mm]) are Subject to Manufacturing Tolerances and Change Without Notice



Size	Inlet/Outlet Size	Flow Rate GPM [lpm]	Water Cap Gal. [L]	Approx. Wt. Lbs. [kg]	Dimensions in Inches [millimeters]						
					C	D/E	F	G	H	K	M
300	4 [102]	10 [38]	7 [26]	106 [48]	59-1/8 [1502]	9-1/8 [232]	25-1/8 [638]	14 [356]	11/5/8 [295]	11 [279]	2/3/4 [70]

ENGINEERING SPECIFICATION: ZURN Z1186-141

Acid Resistant Coated interior and exterior fabricated steel oil interceptor, bronze cleanout plug and visible double wall trap seal, removable combination pressure equalizing/flow diffusing baffle and sediment bucket, horizontal baffle, adjustable oil draw-off and vent connections either side, secured gasketed non-skid cover, complete with flow control fitting and 48" [1591mm] extension. Regularly furnished with inlet and outlet in high position.

Note: Location of outlet from bottom of interceptor cannot be changed.

OPTIONS (Check/specify appropriate options)

PREFIXES

___ Z Acid Resistant Coated Fabricated Steel*

SUFFIXES

- ___ -E Acid Resistant Coated Interior and exterior fabricated steel extension section. (Specify 'C' Dim. required) for recessed installation.
- ___ -HD Heavy duty traffic cover rated at 10,000 lbs. [4536] Kg. maximum safe live load. A 3 [76] minimum extension height is required when heavy-duty cover (-HD) option is specified. (Specify 'C' Dim. height required.)
- ___ -K Anchor flange 1-3/4 [44] down from top and 2 [51] wide. A 3 [76] minimum extension height is required when anchor flange (-K) option is specified. (Specify 'C' Dim. height required.)
- ___ -KC Anchor flange 1-3/4 [44] down from top and 2 [51] wide with clamp collar.

* Regularly furnished unless otherwise specified.