



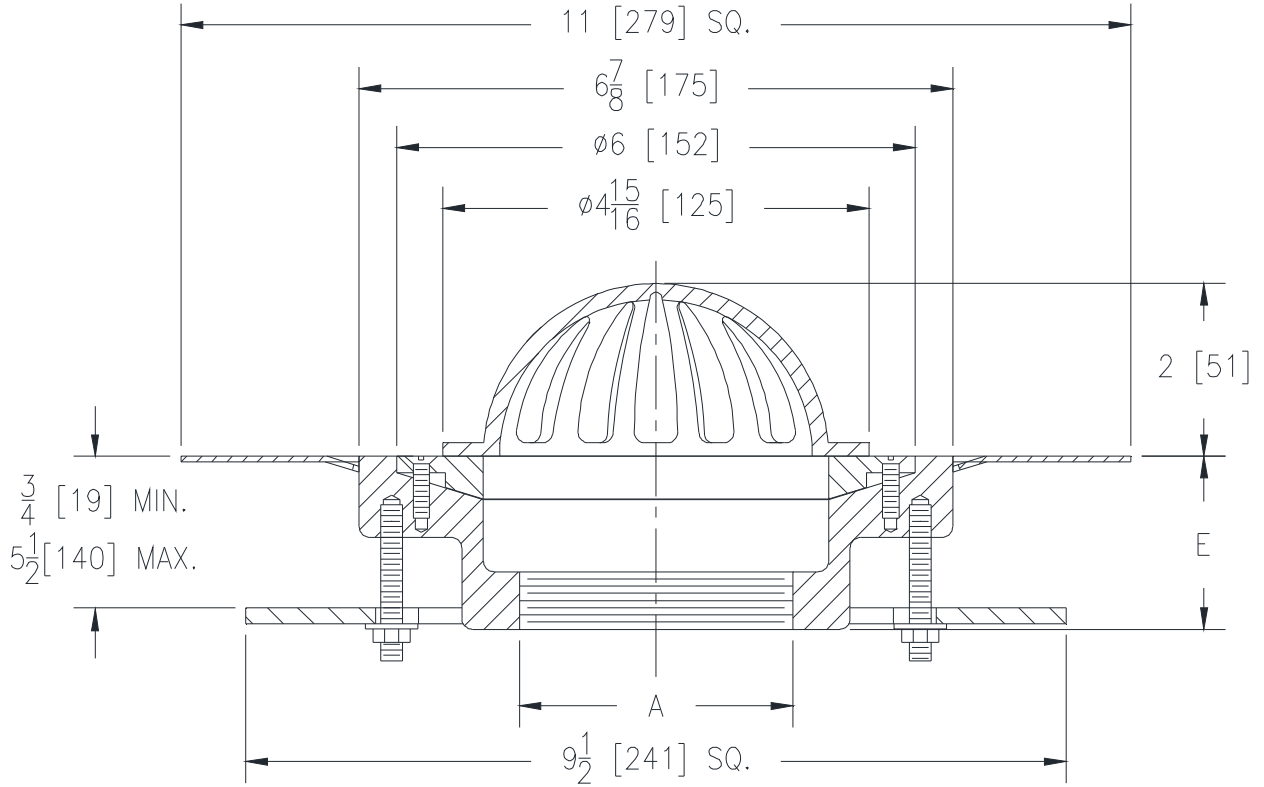
# Z181-C-R

6 [152] DIAMETER CORNICE DRAIN BOTTOM OUTLET  
WITH ROOF SUMP RECEIVER AND UNDERDECK  
CLAMP

SPECIFICATION SHEET

TAG \_\_\_\_\_

Dimensional Data (inches and [ mm ]) are Subject to Manufacturing Tolerances and Change Without Notice



A Pipe Size In. [mm]	Approx. Wt. Lbs. [kg]	Dome Open Area Sq. In. [cm <sup>2</sup> ]
3 [76]	10 [5]	11 [71]
4 [102]	11 [5]	

**ENGINEERING SPECIFICATION: ZURN ZRB181-C-R**  
6" [152mm] Diameter by 2" [51mm] High cornice drain, Dura-Coated cast iron body, roof sump receiver, underdeck clamp, plain bronze dome and membrane flashing clamp.

**OPTIONS** (Check/specify appropriate options)

**PIPE SIZE**

3, 4 [76, 102]  
3, 4 [76, 102]

(Specify size/type) **OUTLET**

\_\_\_\_\_ IP Threaded  
\_\_\_\_\_ NH No-Hub (IP w/ Z1040)

**'E' BODY HT. DIM.**

2 [51]  
4-1/2 [114]

**PREFIXES**

\_\_\_ ZRB D.C.C.I. Body with Plain Bronze Dome\*  
\_\_\_ ZN D.C.C.I. Body with Polished Nickel Bronze Dome

**SUFFIXES**

\_\_\_ -BS Bronze Mesh Screen Over Dome  
\_\_\_ -FS Flat Strainer (ZN Only)  
\_\_\_ -G Galvanized Cast Iron  
\_\_\_ -HD 5-3/4 [146] High Dome  
\_\_\_ -SS Stainless Steel Mesh Screen Over Dome  
\_\_\_ -VP Vandal-Proof Secured Top

\* Regularly furnished unless otherwise specified.