



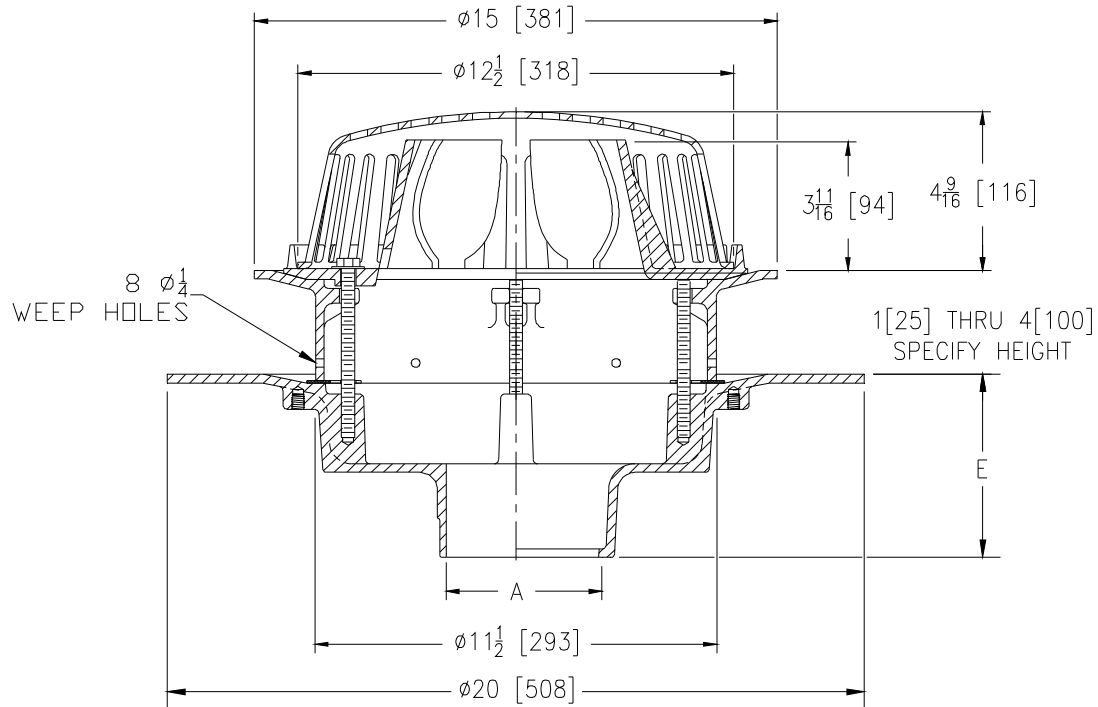
Z105-91

SPECIFICATION SHEET

"CONTROL-FLO" ROOF DRAIN W/ DEX-O-TEX FLANGE,
EXTENSION W/ 1/4" DIA. WEEP HOLES & PARABOLIC WEIR

TAG _____

Dimensional Data (inches and [mm]) are Subject to Manufacturing Tolerances and Change Without Notice



A- Pipe Size In.	Approx. Wt. Lbs. [kg]	Dome Open Area Sq. In. [cm ²]
2-3-4 [51-76-102]	45 [20]	103 [665]

ENGINEERING SPECIFICATION: ZURN Z105-91

Ø15 [381] "Control-Flo" roof drain for Dead-Level roof construction, Dura-Coated cast iron body with Dex-O-Tex flange, static extension with 1/4" diameter weep holes, "Control-Flow" weir shall be linear functioning with integral membrane flashing clamp/gravel guard and Poly-Dome. All data shall be verified proportional to flow rates.

OPTIONS (Check/specify appropriate options)

PIPE SIZE	(Specify size/type)	OUTLET	E BODY HT. DIM.
2, 3, 4 [51, 76, 102]	_____	IC Inside Caulk	5-1/4 [133]
2, 3, 4 [51, 76, 102]	_____	IP Threaded	3-3/4 [95]
2, 3, 4 [51, 76, 102]	_____	NH No-Hub	5-1/4 [133]
2, 3, 4 [51, 76, 102]	_____	NL Neo-Loc	4-9/16 [116]

PREFIXES

- _____ Z D.C.C.I. Body with Poly-Dome*
- _____ ZA D.C.C.I. Body with Aluminum Dome
- _____ ZC D.C.C.I. Body with Cast Iron Dome
- _____ ZRB D.C.C.I. Body with Plain Bronze Dome

SUFFIXES

- _____ -C Underdeck Clamp
- _____ -DE Deck Extension
- _____ -DR Top-Set® Drain Rise
- _____ -EA Adjustable Extension Assembly
2-1/8 [54] thru 3-1/2 [89]
- _____ -G Galvanized Cast Iron
- _____ -R Roof Sump Receiver
- _____ -SC Secondary Clamping Collar
- _____ -TC Neo-Loc Test Cap Gasket
(2-4 [51-102] NL Bottom Outlet Only)
- _____ -VP Vandal Proof Secured Top
- _____ -XJ Vertical Expansion Joint (See Z190)
- _____ -10 6 [152] high Parabolic Weir for Sloped Roof (Z or ZA)
- _____ -90 90° Threaded Side Outlet Body

*REGULARLY FURNISHED UNLESS OTHERWISE SPECIFIED

REV.	DATE: 03/25/11	C.N. NO. 121079
DWG. NO. 305130	PRODUCT NO. Z105-91	