



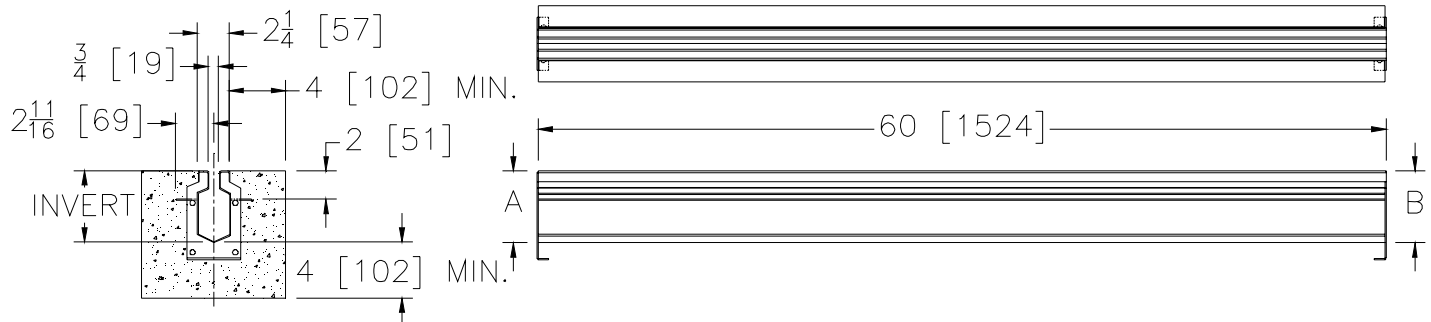
Z891-K

SPECIFICATION SHEET

2-1/4 [57] WIDE REVEAL BY 60 [1524] LONG STAINLESS
STEEL SLOTTED CHANNEL W/ WATERPROOF FLANGE

TAG _____

Dimensional Data (inches and [mm]) are Subject to Manufacturing Tolerances and Change Without Notice



SPECIFYING ENGINEER IS RESPONSIBLE FOR CONCRETE ENCASEMENT AND REINFORCING BASED UPON APPLICATION AND LOCAL CODES

ENGINEERING SPECIFICATION: Zurn Z891-K

Channels shall be 60 [1524] long, 3/4 [19] wide slot, a 2-1/2 [64] throat and a waterproof flange. Modular channel sections shall be made of 16ga. fabricated Stainless Steel conforming to ASTM A-240 (type 304). Channels shall have a bolted, flanged connection between channel sections that will not separate during the installation, gaskets available. Channels shall weigh less than 2 lbs. [.91kg] per linear foot, have a smooth, radiused self cleaning bottom with a Manning's coefficient of .009 and .75% or neutral 0% built in slope. Channels shall have feet for patty pour or leveling studs standard to secure trench in its final location. Channels shall be produced in the U.S.A.

Trench No.	Shallow Invert	Deep Invert	FLOW		
			LPM	GPM	LPS
89101	4.00 [102]	4.63 [118]	194	51	3
89102	4.63 [118]	5.25 [133]	255	67	4
89103	5.25 [133]	5.88 [149]	316	84	5
89104	5.88 [149]	6.50 [165]	378	100	6
89105	6.50 [165]	7.13 [181]	441	117	7
89106	7.13 [181]	7.75 [197]	504	135	8
89107	7.75 [197]	8.38 [213]	568	150	9
89108	8.38 [213]	9.00 [229]	632	167	11
89109	9.00 [229]	9.63 [245]	696	184	12
89110	9.63 [245]	10.25 [260]	760	201	13

PREFIX OPTIONS (Check/specify appropriate options)

___ Z 5-Foot Stainless Steel Slotted Trench Drain with bolted flange connection*

SUFFIX OPTIONS (Check/specify appropriate options)

Outlet Adapters Add/Each

- ___ -E1 Closed End Cap
- ___ -E2 2 [51] No-Hub End Outlet
- ___ -U2 2 [51] No-Hub Bottom Outlet

Miscellaneous Option

- ___ -KC Pan and Clamping Collar with Weep Holes

REV.	DATE: 05/24/11	C.N. NO. 121338
DWG. NO. 305967	PRODUCT NO. Z891-K	

*REGULARLY FURNISHED UNLESS OTHERWISE SPECIFIED