



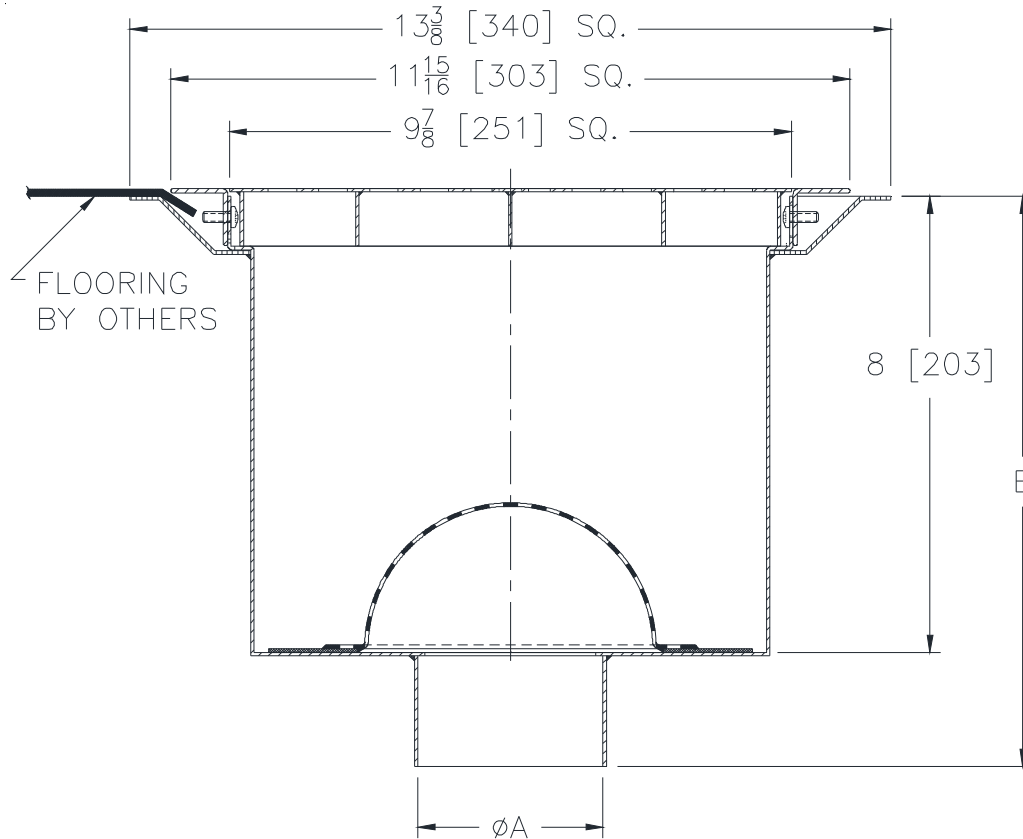
# Z1755-78

13-3/8" SQ. [340mm] SANI-FLOR RECEPTOR  
8 [203] SUMP W/ ADJUSTABLE CLAMP FRAME

SPECIFICATION SHEET

TAG \_\_\_\_\_

Dimensional Data (inches and [ mm ]) are Subject to Manufacturing Tolerances and Change Without Notice



A- Pipe Size In. [mm]	Approx. Wt. Lbs. [kg]	Grate Open Area Sq. In. [Sq. cm]
2,3,4 [51,76,102]	10 [5]	25 [161]

**ENGINEERING SPECIFICATION: ZURN Z1755-78**  
 13-3/8" [340mm] Square x 8" [203mm] deep, 16 gage, All Type 304 (CF8) Fabricated stainless steel light-duty Sani-Flor receptor with Integral flooring clamp frame for unlevel floor installations and non-tilt loose-set full grate with interior dome strainer

### OPTIONS (Check/specify appropriate options)

**PIPE SIZE**  
 2,3,4 [51,76,102]

(Specify size) **OUTLET**  
 \_\_\_\_\_ NH No-Hub

**'E' BODY HT. DIM.**  
 10 [254]

### PREFIXES

- \_\_\_\_\_ Z Type 304 (CF8) Stainless Steel Body\*
- \_\_\_\_\_ ZM Type 316 (CF8M) Stainless Steel

### SUFFIXES

- \_\_\_\_\_ -P 1/2 [13] Trap Primer Connection
- \_\_\_\_\_ -2 1/2 Grate
- \_\_\_\_\_ -3 3/4 Grate

\* Regularly furnished unless otherwise specified.