

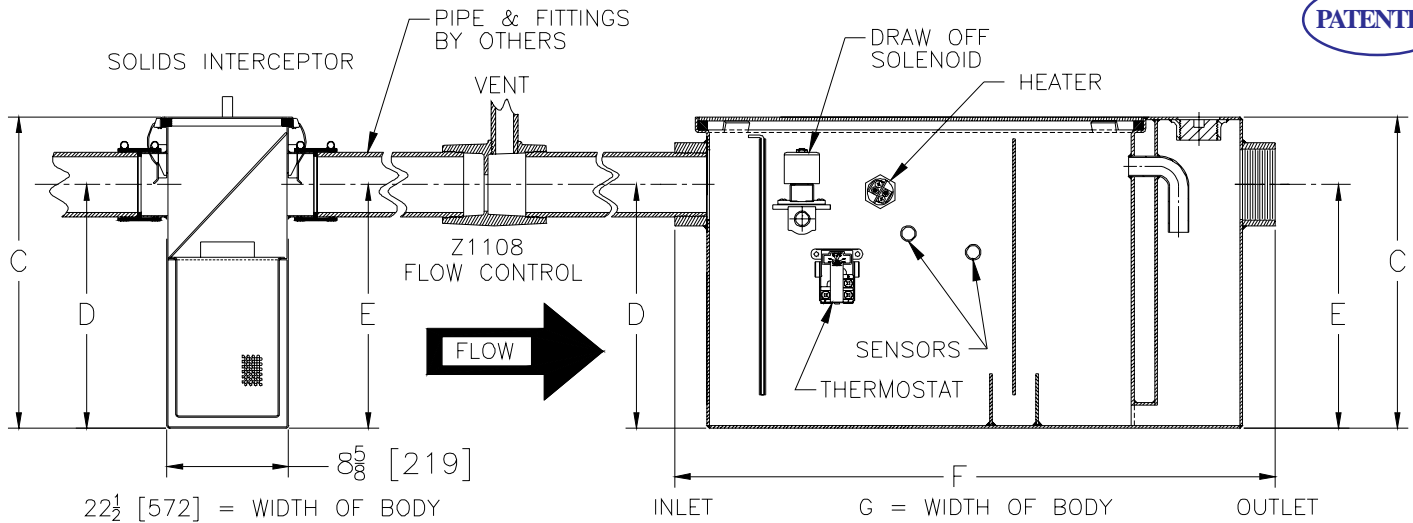


Z1192-95 GREASE INTERCEPTOR WITH ELECTRONIC DRAW-OFF COMPARTMENT

SPECIFICATION SHEET

TAG _____

Dimensional Data (inches and [mm]) are Subject to Manufacturing Tolerances and Change Without Notice



Size	Inlet/Outlet Size	Flow Rate GPM. [L]	Water Gal. [L]	Grease Lbs. [kg]	Approx. Wt. Lbs. [kg]	Dimensions in Inches			
						C	D/E	F	G
700	3 [76]	35 [132]	30 [114]	70 [32]	257 [117]	18 3/4 [476]	14 3/16 [360]	33 1/8 [841]	33 [838]
800		50 [189]	40 [151]	100 [45]	290 [132]	21 1/2 [546]	16 [406]	35 [889]	35 [889]
900		75 [283]	65 [246]	150 [68]	430 [195]	25 1/4 [641]	20 [508]	36 [914]	39 1/8 [994]
1000		100 [379]	110 [416]	200 [91]	526 [239]	28 [711]	23 [584]	42 3/4 [1086]	44 1/8 [1121]

ENGINEERING SPECIFICATION: ZURN Z1192-95 Type 304 #12 gage stainless steel grease recovery appliance, rated at ___ GPM and ___ Lbs. grease capacity, with sensor controlled grease draw off valve, audible alarm when maximum grease capacity is reached, industrial grade control logic, integral heating element(s), digital display and electronics wired with 15 ft. of cable as separate enclosures, internal air relief by-pass, cleanout plug, visible double wall trap seal, and removable combination pressure equalizing/flow diffusing baffle, with grease containing enclosure on left side when facing inlet as standard. Gasketed stainless steel secured covers. Complete with Z1108 flow control fitting, discharge hose, automatically sealing coupler, and grease reservoir. Also includes a fabricated stainless steel solids interceptor with lift out basket, replaceable filter bags, retainer plate and easy to remove cover. 220 VAC 36 Amp single phase. G.F.C.I. breaker furnished by others. Must be installed to local codes where applicable.

PREFIXES

___ Z Type 304 #12 Gage Stainless Steel

Note: Size and location of I/O from bottom of interceptor cannot be changed.

SUFFIXES

- ___ -C30 Cable length of 30ft. [9411] for digital display
- ___ -C45 Cable length of 45ft. [13716] for digital display
- ___ -L Angle type (Z1108-L) flow control device
- ___ -PW Plug wrench
- ___ -RH Grease containing compartment on right side when facing inlet
- ___ -SI Solids interceptor only (specify required size)
- ___ -XB Extra solids interceptor sediment basket.
- ___ -XF Extra supply of 30 solids filter bags
- ___ -XG Extra supply of 30 grease containment bags

CAUTION: Solids Interceptor must be maintained on a daily basis. The unit must be cleaned periodically in order to ensure proper operation of the system. Cleaning schedule based on usage.

REV. A DATE: 5/30/06 C.N. NO. 95151
DWG. NO. P-15206 PRODUCT NO. Z1192-95