

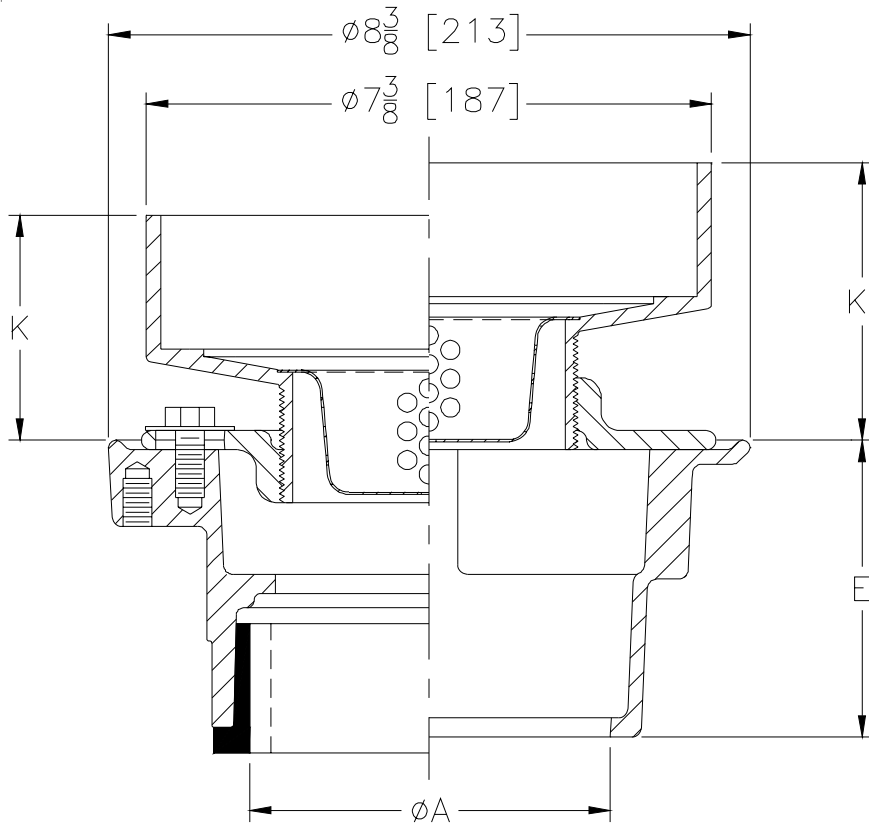


Z415I-76 BODY ASSEMBLY W/ "TYPE I" STRAINER & S.S. BUCKET

SPECIFICATION SHEET

TAG _____

Dimensional Data (inches and [mm]) are Subject to Manufacturing Tolerances and Change Without Notice



Dimensions In Inches						Approx. Wt. Lbs. [Kg.]
A - Pipe Size	B Strainer Dia.	K		K'		
		Min.	Max.	Min.	Max.	
2-3-4 [51-76-102]	7 [178]	2 1/4 [57]	2 3/8 [60]	3 1/8 [79]	4 1/2 [114]	19 [9]

ENGINEERING SPECIFICATION: ZURN Z415I-76 Floor and shower drain, Dura-Coated cast iron body with bottom outlet, combination invertible membrane clamp and adjustable collar with "TYPE I" polished bronze top and stainless steel type #304 sediment bucket.

OPTIONS (Check/specify appropriate options)

PIPE SIZE	(Specify type/size) OUTLET	'E' BODY HT. DIMENSION
2 thru 4 [51 thru 102]	_____ IC Inside Caulk	3 7/8 [98]
2 [51]	_____ IP Threaded	2 3/8 [60]
3 [76]	_____ IP Threaded	2 5/8 [67]
4 [102]	_____ IP Threaded	2 7/8 [73]
2 thru 4 [51 thru 102]	_____ NH No-Hub	3 7/8 [98]
2 thru 4 [51 thru 102]	_____ NL Neo-Loc	4 5/8 [117]

PREFIXES

_____ **ZB** D.C.C.I. Body Assembly with Polished Bronze Top *

REV. C	DATE: 03/11/04	C.N. NO. 92016
DWG. NO. P-13921	PRODUCT NO. Z415I-76	

*REGULARLY FURNISHED UNLESS OTHERWISE SPECIFIED