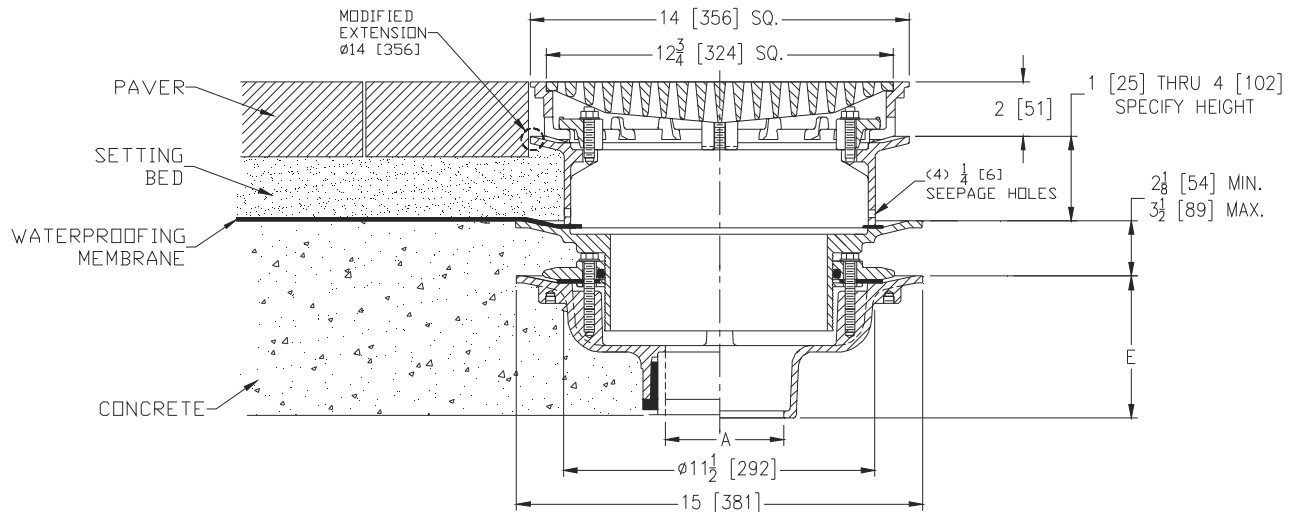


**Z150-142****14 [356] SQUARE TOP PROM-DECK DRAIN W/ MODIFIED  
STATIC EXTENSION & ADJUSTABLE EXTENSION****SPECIFICATION SHEET****TAG** \_\_\_\_\_

Dimensional Data (inches and [ mm ]) are Subject to Manufacturing Tolerances and Change Without Notice



A Pipe Size In. [mm]	Approx. Wt. Lbs. [kg]	Grate Open Area Sq. In. [cm <sup>2</sup> ]
2,3,4 [51,76,102]	53 [24]	44 [284]
5,6 [127,152]		
8 [203]	54 [24]	

**ENGINEERING SPECIFICATION: ZURN Z150-142**

14" [356 mm] Top Prom-Deck drain, Dura-Coated cast iron body with rotatable square promenade frame with seepage openings, frame clamps, heavy-duty heel-proof cast iron grate, modified static extension with seepages holes and adjustable extension assembly.

**OPTIONS** (Check/specify appropriate options)**PIPE SIZE**

2,3,4,5,6, 8 [51,76,102,127,152, 203]  
2,3,4,5,6, 8 [51,76,102,127,152, 203]  
2,3,4,5,6, 8 [51,76,102,127,152, 203]  
2,3,4 [51,76,102]

**(Specify size/type) OUTLET**

\_\_\_ IC Inside Caulk  
\_\_\_ IP Threaded  
\_\_\_ NH No-Hub  
\_\_\_ NL Neo-Loc

**E BODY HT. DIM.**

5-1/4 [133]  
3-3/4 [95]  
5-1/4 [133]  
4-9/16 [116]

**PREFIXES**

\_\_\_ Z D.C.C.I. Body with Grate\*  
\_\_\_ ZB D.C.C.I. Body with Polished Bronze Grate (Add 3/16 [5] to 2 [51] Dim & 3/8 [10] to 14 [356] Dim.)  
\_\_\_ ZN D.C.C.I. Body with Polished Nickel Bronze Grate (Add 3/16 [5] to 2 [51] Dim. & 3/8 [10] to 14 [356] Dim.)

**SUFFIXES**

___ -AR Acid Resistant Epoxy Coated	___ -SC Secondary Clamping Collar
___ -C Underdeck Clamp	___ -TC Neo-Loc Test Cap Gasket (2,3,4 [51,76,102] NL Bottom Outlet Only)
___ -DB Deep Sump Body	___ -TS Top Secured with Slotted Screws
___ -DP Top-Set® Roof Deck Plate (Replaces both the -C and -R)	___ -VP Vandal-Proof Secured Top
___ -DR Top-Set® Drain Riser (Adjustment from 3-5/8 [92] to 7-1/4 [184])	___ -XJ Vertical Expansion Joint (See Z190)
___ -EB Top-Set® Adjustable Extension Assembly	___ -Y Sediment Bucket
___ -G Galvanized Cast Iron	___ -85 Stainless Steel Perforated Extension
___ -R Roof Sump Receiver	___ -90 90° Threaded Side Outlet Body (2,3,4,5,6 [51,76,102,127,152])
___ -S Secondary Strainer	

\* Regularly furnished unless otherwise specified.