



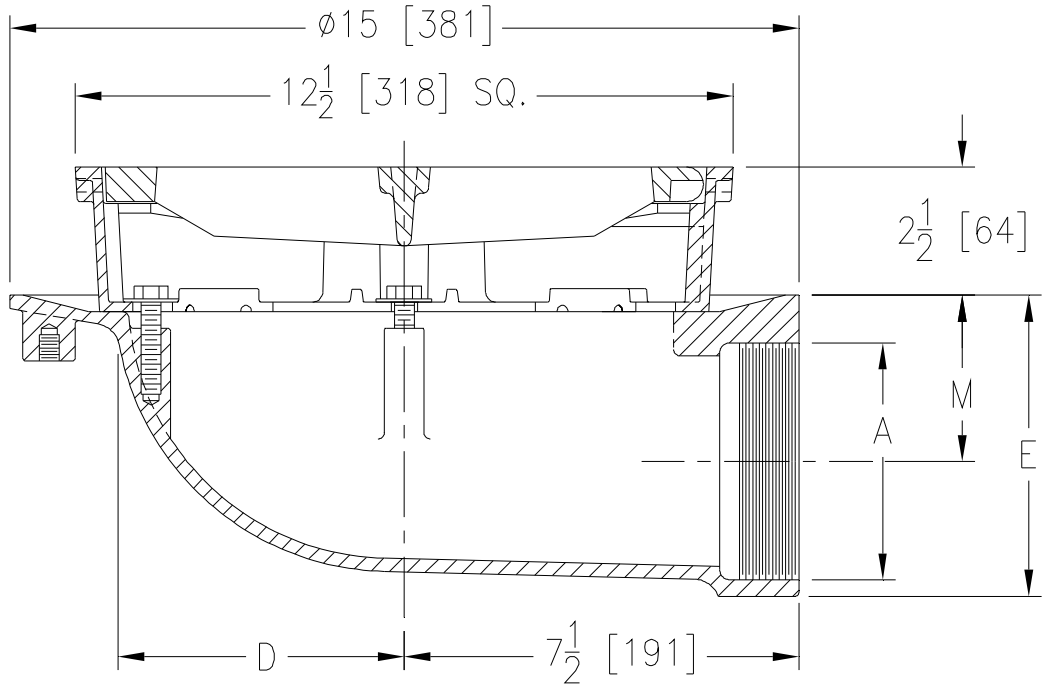
Z505-T-90

12-1/2 [318] SQUARE TOP HEAVY-DUTY DRAIN W/ THREADED SIDE OUTLET

SPECIFICATION SHEET

TAG _____

Dimensional Data (inches and [mm]) are Subject to Manufacturing Tolerances and Change Without Notice



Dimensions in In [mm]			Approx. Wt. Lbs. [kg]	Grate Open Area Sq. In [cm ²]
A Pipe Size	D	M		
2 [51]	5-1/2 [140]	4-1/4 [108]	40 [18]	42 [271]
3 [76]	5-1/2 [140]	3-11/16 [94]	41 [19]	
4 [102]	5-1/2 [140]	3-3/16 [81]	42 [19]	
6 [152]	5-1/2 [140]	4-1/4 [108]	44 [20]	

ENGINEERING SPECIFICATION: ZURN Z505-T-90
 12-1/2" [318mm] Square top heavy-duty drain. Dura-Coated cast iron body with side outlet, seepage pan and combination membrane flashing clamp and frame for heavy-duty deep flange slotted grate.

OPTIONS (Check/specify appropriate options)

PIPE SIZE

2, 3, 4 [51, 76, 102]
 6 [152]

(Specify size) **OUTLET**

___ IP Threaded
 ___ IP Threaded

'E' BODY HT. DIM.

5-3/4 [146]
 7-7/8 [200]

PREFIXES

- ___ Z D.C.C.I. Body and Grate*
- ___ ZB D.C.C.I. Body with Polished Grate (Add 3/16 [5] to 2 [51] Dim.)
- ___ ZN D.C.C.I. Body with Polished Nickel Bronze Grate (Add 3/16 [5] to 2 [51] Dim.)

SUFFIXES

- ___ -AR Acid Resistant Epoxy Coated Cast Iron
- ___ -DG Duresist Grate
- ___ -F Extension Frame (Specify Total Height Required)
- ___ -G Galvanized Cast Iron
- ___ -SS Stainless Mesh Liner for Bucket
- ___ -TS Top Secured with Slotted Screws
- ___ -VP Vandal Proof Secured Top
- ___ -Y Sediment Bucket

* Regularly furnished unless otherwise specified.