



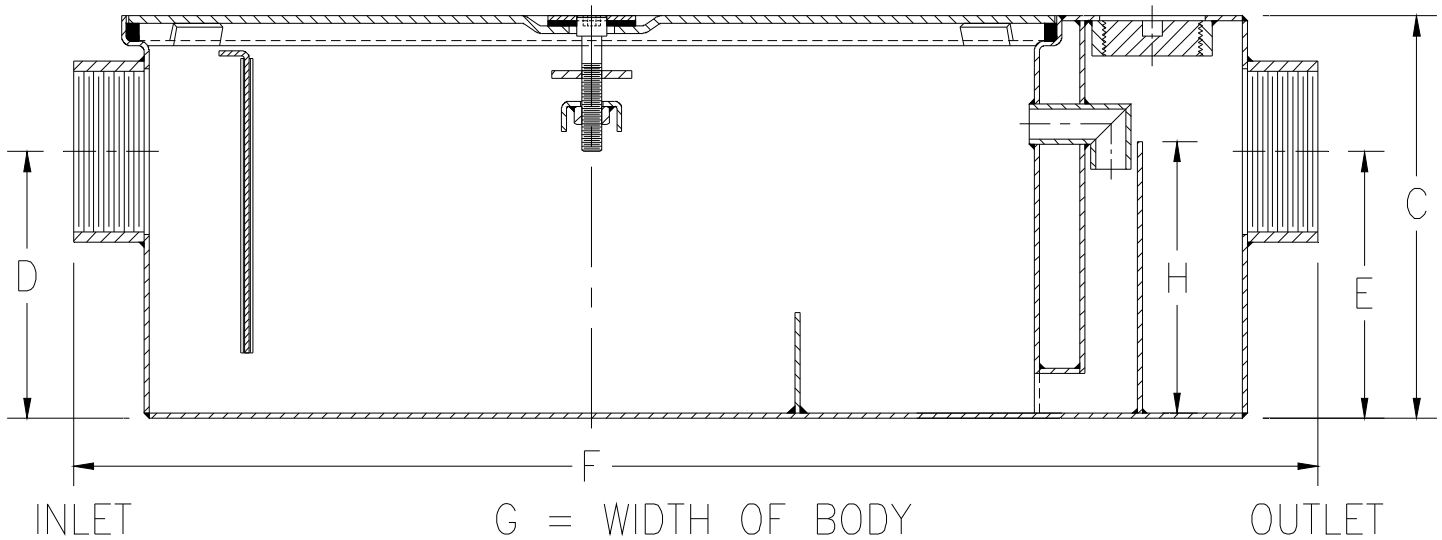
Z1171-81

LOW PROFILE GREASE INTERCEPTOR W/ HIGH INLET AND OUTLET

SPECIFICATION SHEET

TAG _____

Dimensional Data (inches and [mm]) are Subject to Manufacturing Tolerances and Change Without Notice



| Size | Inlet/ Outlet Size* | Flow Rate G.P.M. [L] | Capacity | | Approx. Wt. Lbs. [kg] | Dimensions in Inches | | | | |
|------|---------------------------|----------------------------|-------------------|---------------------|-----------------------------|----------------------|--------------|---------------|--------------|-------------|
| | | | Water Gal. [L] | Grease Lbs. [kg] | | C | D/E | F | G | H |
| 500 | 3" [76] | 20 [76] | 15 [60] | 40 [18] | 102 [46] | 10 [254] | 6 5/8 [168] | 31 [787] | 21 1/8 [536] | 6 3/4 [171] |
| 700 | | 35 [132] | 30 [113] | 70 [32] | 172 [78] | 10 3/4 [273] | 7 3/8 [187] | 42 1/8 [1070] | 29 3/8 [746] | 7 [178] |
| 800 | | 50 [189] | 45 [170] | 100 [45] | 210 [95] | 16 [406] | 12 5/8 [321] | 49 1/2 [1257] | 29 3/8 [746] | 10 [254] |

ENGINEERING SPECIFICATION: ZURN Z1171-81 Acid Resistant Coated interior and exterior fabricated steel low type grease interceptor, rated at ____ GPM and ____ Lbs. grease capacity, with internal air relief by-pass, bronze cleanout plug, removable pressure equalizing/flow diffusing inlet baffle, fixed bottom outlet baffle, and visible double wall trap seal. Gasketed non-skid secured cover, complete with center tie down assembly and Z1108 flow control fitting. Regularly furnished with 3 [76] high inlet and outlet.*

OPTIONS (Check/specify appropriate options)

PREFIXES

- ___ Z Acid Resistant Coated Fabricated Steel*
- ___ ZS All Type 304 Fabricated Stainless Steel

SUFFIXES

- ___ -L Angle Type (Z1108-L) Flow Control Device with Plunger.

| | | |
|---------------------------------------|---------------|-----------------|
| REV. | DATE: 1/18/10 | C.N. NO. 110599 |
| DWG. NO. P-15836 PRODUCT NO. Z1171-81 | | |

*REGULARLY FURNISHED UNLESS OTHERWISE SPECIFIED