

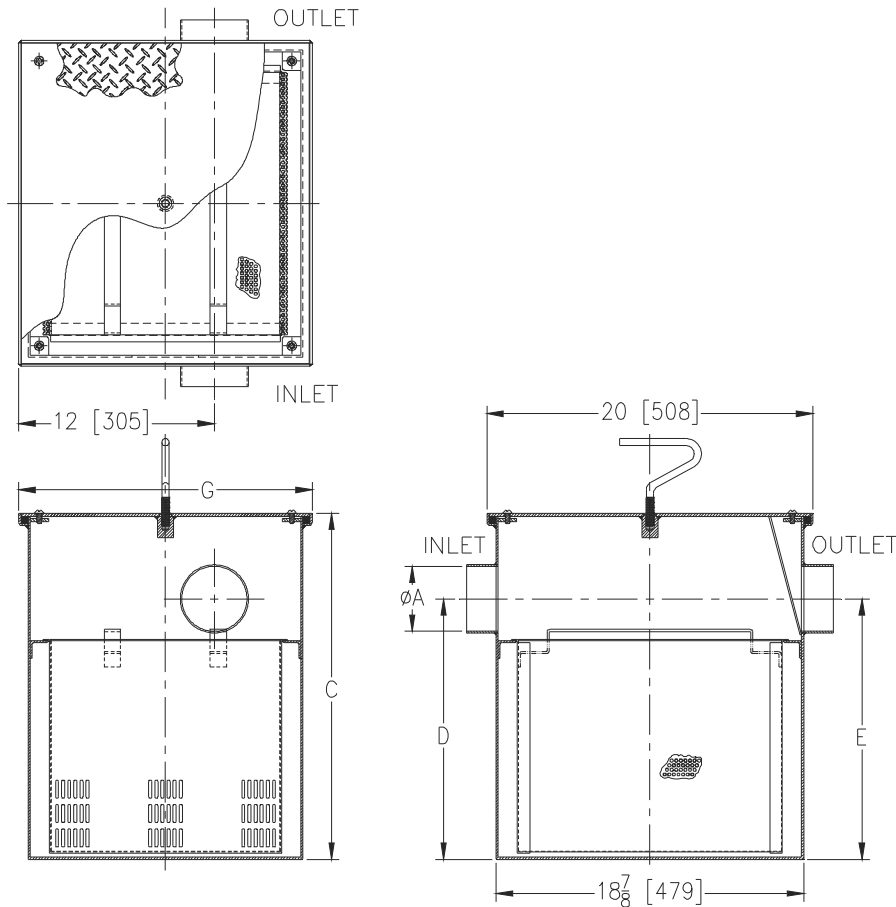


Z1183-FC-88
SIZE 900 SOLIDS INTERCEPTOR
W/ FLUSH COVER & EXTENSION

SPECIFICATION SHEET

TAG _____

Dimensional Data (inches and [mm]) are Subject to Manufacturing Tolerances and Change Without Notice



Size	'A' Inlet/Outlet Size	Flow Rate G.P.M. [L]	Solids Cap. Cubic Ft. [m ³]	Dimensions In Inches		
				C	G	D/E
900	3 [76]	75 [284]	2.1 [.059]	40-1/2 [1029]	18 [457]	18-1/2 [470]

ENGINEERING SPECIFICATION: ZURN Z1183-FC-88

Large capacity acid resistant coated interior and exterior fabricated steel, or stainless steel solids interceptor with extension, for recessed installation with screen attached to gasketed, non-skid secured cover with removable lift handle, and removable sediment basket.

OPTIONS (Check/specify appropriate option)

PREFIXES

- ___ Z Acid Resistant Coated Fabricated Steel*
- ___ ZS Type 304 Fabricated Stainless Steel

SUFFIXES

- ___ -CS Custom Screens (Specify material and perforation size required)
- ___ -YR Replacement Stainless Steel Bucket Assembly

* Regularly furnished unless otherwise specified.