



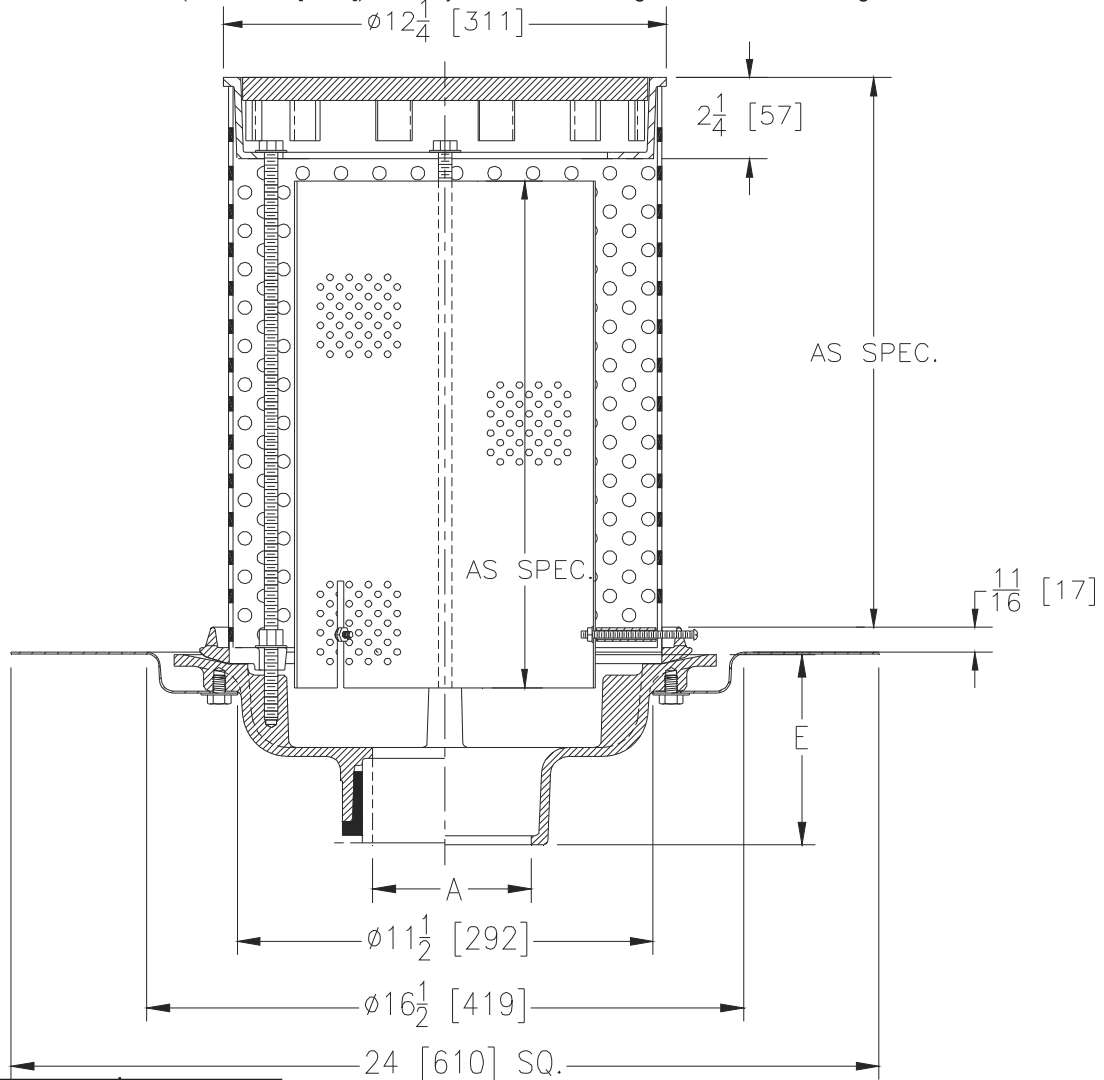
# Z100-303

15 [381] DIAMETER MAIN DECK DRAIN WITH PERFORATED EXTENSION, FILTER, & SOLID COVER

SPECIFICATION SHEET

TAG \_\_\_\_\_

Dimensional Data (inches and [ mm ]) are Subject to Manufacturing Tolerances and Change Without Notice



A- Pipe Size In. [mm]	Approx. Wt. Lbs. [kg]
2,3,4,5,6,8 [51,76,102,127,152,203]	49 [22]

**ENGINEERING SPECIFICATION: ZURN Z100-303**

15" [381mm] Diameter wide deck drain. Acid resistant epoxy coated cast iron body with combination flashing clamp, deck receptor frame, stainless steel perforated extension, secondary perforated filter adjustable for varying deck thickness and secondary frame for anti-tilt solid cover. All iron and steel parts to be acid resistant epoxy coated.

**OPTIONS** (Check/specify appropriate options)

**PIPE SIZE**

- 2,3,4,5,6,8 [51,76,102,127,152,203]
- 2,3,4,5,6,8 [51,76,102,127,152,203]
- 2,3,4,5,6,8 [51,76,102,127,152,203]
- 2,3,4 [51,76,102]
- 6 [152]

(Specify size/type) **OUTLET**

- \_\_\_\_\_ IC Inside Caulk
- \_\_\_\_\_ IP Threaded
- \_\_\_\_\_ NH No-Hub
- \_\_\_\_\_ NL Neo-Loc
- \_\_\_\_\_ NL Neo-Loc

**E BODY HT. DIM.**

- 5-1/4 [133]
- 3-3/4 [95]
- 5-1/4 [133]
- 4-9/16 [116]
- 5-7/16 [112]

**PREFIXES**

- \_\_\_\_\_ Z Acid Resistant Epoxy Coated Body, Frame, and Cover

\* Regularly furnished unless otherwise specified.