



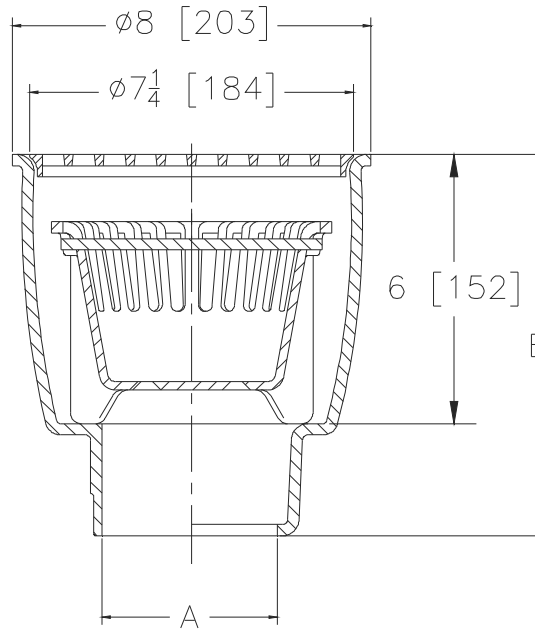
Z1960-23

8 [203] DIAMETER A.R.E. SANI-FLOR RECEPTOR
6 [152] SUMP DEPTH WITH ALUMINUM BUCKET

SPECIFICATION SHEET

TAG _____

Dimensional Data (inches and [mm]) are Subject to Manufacturing Tolerances and Change Without Notice



A Pipe Size In. [mm]	Approx. Wt. Lbs. [kg]	Grate Open Area Sq. In. [cm ²]
2,3,4 [51,76,102]	26 [11]	21 [136]

ENGINEERING SPECIFICATION: ZURN Z1960-23
Sani-Flor Receptor 8" [203mm] diameter x 6" [152mm] deep cast iron body and round square holed light duty grate, with white acid resisting porcelain enamel interior and top, black ground exterior coating, complete with aluminum bucket.

OPTIONS (Check/specify appropriate options)

PIPE SIZE

(Specify size/type) **OUTLET**

'E' BODY HT. DIMENSION

3,4 [76,102]

___ IC Inside Caulk

8-1/2 [216]

9 [229]

2,3,4 [51,76,102]

___ NH No-Hub

8-1/2 [216]

9 [229]

2,3,4 [51,76,102]

___ NL Neo-Loc

8 [203]

8-7/16 [214]

PREFIXES

- ___ Z Cast Iron Body with White A.R.E. Interior*
- ___ ZN Cast Iron Body with White A.R.E. Interior, 8-1/2 [216] Nickel Bronze Frame and Full Grate with 1/4 [6] Square Openings

SUFFIXES

- | | |
|--|---|
| ___ -K Anchor Flange with Seepage Holes | ___ -1 Less Grate |
| ___ -KC Anchor Flange with Seepage Holes and Clamp Collar | ___ -2 1/2 Grate |
| ___ -LD Less Internal Bottom Dome Strainer | ___ -3 3/4 Grate |
| ___ -P 1/2 [13] Threaded Trap Primer Connection (See Z1023) | ___ -4 Full Grate with 2 [51] Square Opening |
| ___ -T Square Frame and Round Grate with 1/4 [6] Square Openings (ZN Only) | ___ -6 Grate w/6 [152] Diameter x 6 [152] High Funnel |
| ___ -TC Neo-Loc Test Cap Gasket (2,3,4 [51,76,102] NL Bottom Outlet Only) | ___ -8 Grate w/8-7/8 x 3-5/8 x 3-3/4 [225 x 92 x 95] High Oval Funnel |
| | ___ -11 Vandal Proof Secured Grate |
| | ___ -15 Solid Loose Set Cover |
| | ___ -31 Stainless Steel Mesh Liner for Bucket |

* Regularly furnished unless otherwise specified.