



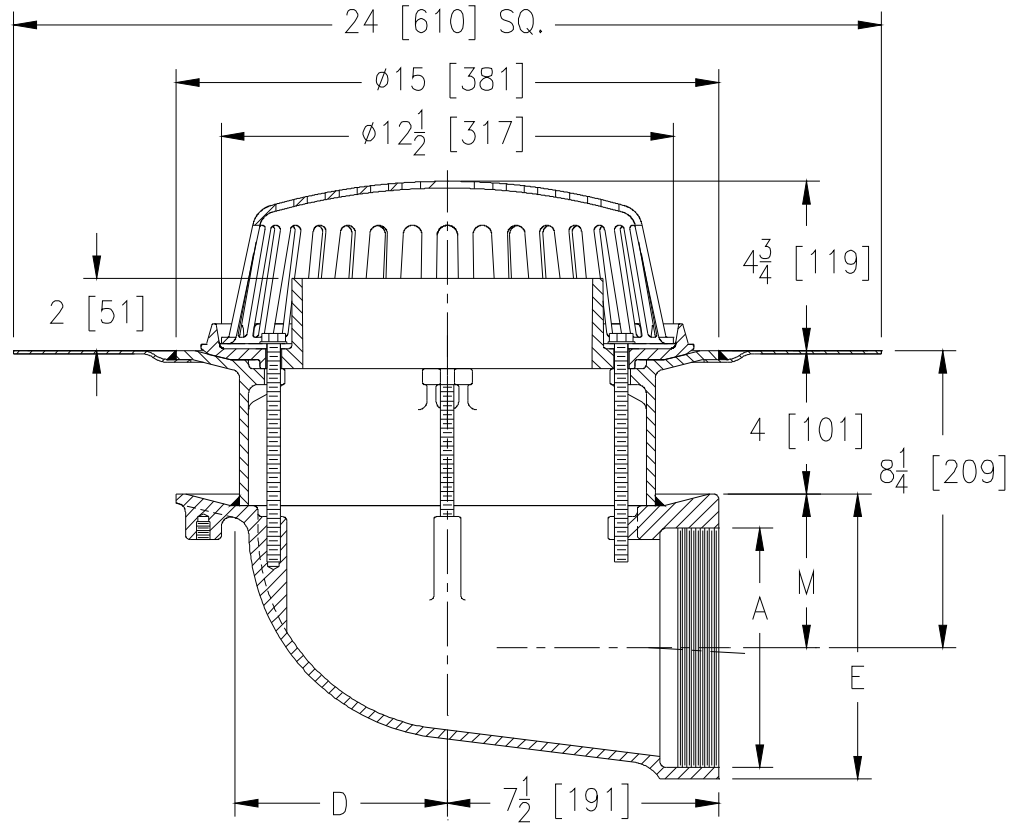
# Z100-168

## 15 [381] DIAMETER LATERAL ROOF DRAIN W/ EXTENSION, ROOF SUMP RECEIVER & WATER DAM

SPECIFICATION SHEET

TAG \_\_\_\_\_

Dimensional Data (inches and [mm]) are Subject to Manufacturing Tolerances and Change Without Notice



Dimensions In Inches			Approx. Wt. Lbs. [kg]	Dome Open Area Sq. In.[cm <sup>2</sup> ]
A Pipe Size	D	M		
6 [152]	5 7/8 [149]	4 1/4 [108]	37 [17]	103 [665]

### ENGINEERING SPECIFICATION: ZURN Z100-168

15 [381] Diameter roof drain. 90° threaded side outlet body with combination membrane flashing clamp/gravel guard, 4 [102] static extension, 2 [51] high internal water dam with roof sump receiver and low silhouette Poly-Dome strainer.

### OPTIONS (Check/specify appropriate options)

#### PIPE SIZE

6 [152]

#### OUTLET

\_\_\_\_\_ IP Threaded

#### E BODY HT. DIM.

7 7/8 [200]

### PREFIXES

- \_\_\_\_\_ **Z** D.C.C.I. Body with Poly-Dome\*
- \_\_\_\_\_ **ZA** D.C.C.I. Body with 6 3/4 [171] High Aluminum Dome
- \_\_\_\_\_ **ZC** D.C.C.I. Body with Cast Iron Dome
- \_\_\_\_\_ **ZRB** D.C.C.I. Body with Plain Bronze Dome

### SUFFIXES

- \_\_\_\_\_ **-AR** Acid Resistant Epoxy Coated Finish
- \_\_\_\_\_ **-BS** Bronze Mesh Screen Over Dome
- \_\_\_\_\_ **-FG** Flush Grate
- \_\_\_\_\_ **-G** Galvanized Cast Iron
- \_\_\_\_\_ **-GD** Galvanized Cast Iron Dome (ZC only)
- \_\_\_\_\_ **-H** High Dome
- \_\_\_\_\_ **-SS** Stainless Steel Mesh Screen Over Dome
- \_\_\_\_\_ **-VP** Vandal-Proof Secured Top

\*REGULARLY FURNISHED UNLESS OTHERWISE SPECIFIED

REV. DATE: 9/19/05 C.N. NO. 93783

DWG. NO. P-15198 PRODUCT NO. Z100-168