



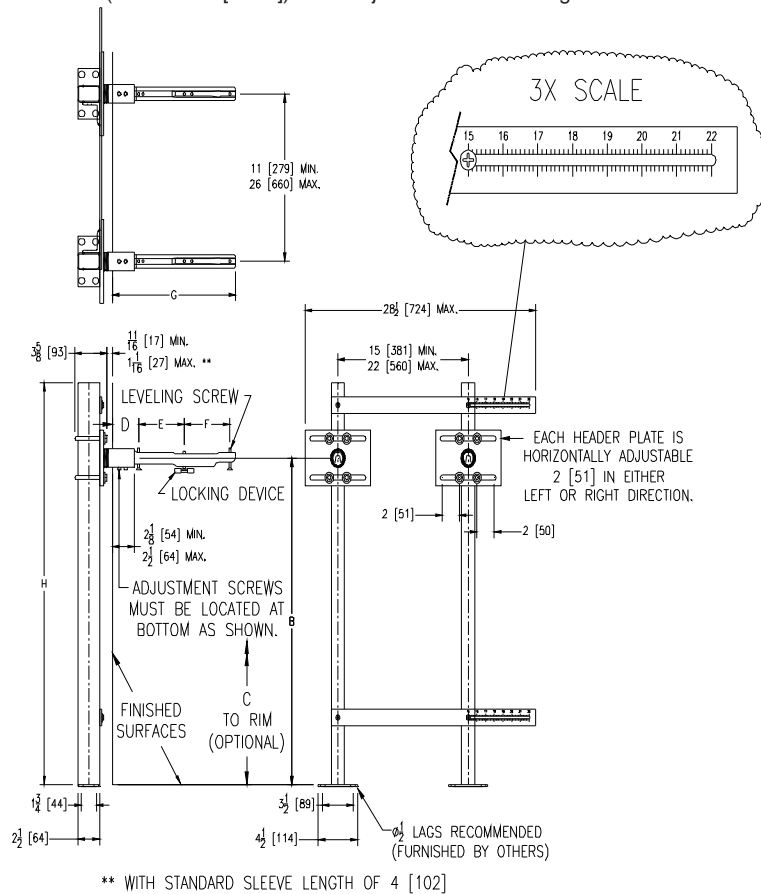
Z1231-EZR-75

CONCEALED ARM SYSTEM FOR WALL LAVATORIES W/ ADJUSTABLE UPRIGHTS AND HEADER PLATES (3-5/8 [93] OVERALL DEPTH)

SPECIFICATION SHEET

TAG _____

Dimensional Data (inches and [mm]) are Subject to Manufacturing Tolerances and Change Without Notice



Product No.	Approx. Wt. Lbs. [kg]
Z1231-EZR-75	45 [20]

ENGINEERING SPECIFICATION: ZURN Z1231-EZR-75

Wall Lavatory Support System complete with Dura-Coated carbon structural steel rectangular tubing uprights, conforming to ASTM A500 Grade C, with welded base feet having slotted floor anchor holes. Lower and upper labor-saver plates are marked with an indexed ruler guide for accurate adjustability of upright spacing, from 15 [381] to 22 [560]. Individual slotted header plates provide 2 [51] of additional

horizontal adjustment per plate, allowing for a total horizontal adjustment range of 11 [279] to 26 [660]. Includes Dura-Coated steel sleeves and cast iron concealed arms with leveling screws and soft set elastomeric locking devices. Uprights, labor-saver plates, and header plates are factory assembled for easy installation. Carrier system exceeds load and deflection requirements as outlined in ASME standard A112.6.1M at all adjustment positions of the uprights and header plates.

OPTIONS (Check/specify appropriate options)

PREFIXES

___ Z Dura-Coated System with Support Plate*

SUFFIXES

- | | |
|--|--|
| ___ -AL Adapter Lug | ___ -SL Sleeve Length Over 4 [102] (Specify Length) |
| ___ -CU Floor to Ceiling Upright (Specify Height Required) | ___ -WS Wall Support Valve Plate (Specify Valve Name and Number) |
| ___ -D Back to Back System | ___ -79 Paraplegic Rough-In |
| ___ -E2 Concealed Arm Escutcheons 2 [51] Long | |
| ___ -E4 Concealed Arm Escutcheons 4 [102] Long | |
| ___ -E6 Concealed Arm Escutcheons 6 [152] Long | |

*REGULARLY FURNISHED UNLESS OTHERWISE SPECIFIED

REV. A	DATE: 9/20/10	C.N. NO. 111730
DWG. NO. 301278		PRODUCT NO. Z1231-EZR-75