



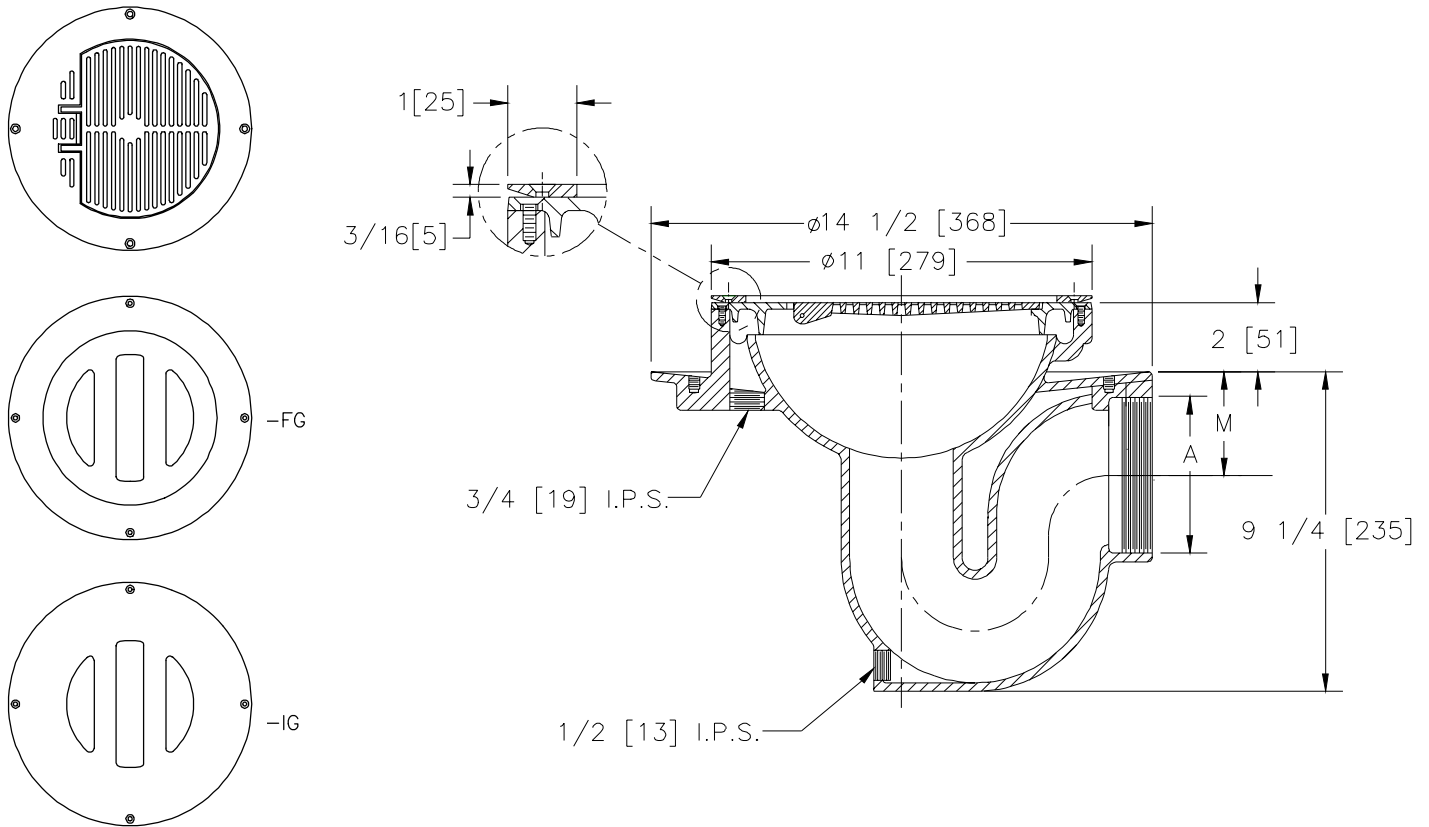
Z-300-80

THOROFLUSH DRAIN WITH TILE CLAMP COLLAR

SPECIFICATION SHEET

TAG _____

Dimensional Data (inches and [mm]) are Subject to Manufacturing Tolerances and Change Without Notice



Dimensions in Inches		Approx. Wt. Lbs. [kg]	Grate Open Area Sq. In. [cm ²]
A-Pipe Size	M		
2 [50]	3 [76]	50 [23]	18 [116]
3 [75]	2 1/2 [64]		
4 [100]	3 [76]		

ENGINEERING SPECIFICATION: ZURN ZN-300-80 11 [279] Top Thoroflush Drain with integral double wall trap, cast iron body with white acid resistant epoxy coated exterior and interior, side outlet with seepage pan, nickel bronze flushing rim top, slotted hinged grate and tile clamp collar.

OPTIONS (Check/specify appropriate options)

PIPE SIZE

2, 3, 4 [50, 75, 100]

(Specify size/type) **OUTLET**

____ IP Threaded

PREFIXES

- ____ ZB- Cast Iron Body w/A.R.C. Interior and Exterior w/Polished Bronze Grate
- ____ ZN- Cast Iron Body w/A.R.C. Interior and Exterior w/Polished Nickel Bronze Grate*

SUFFIXES

- ____ -C Clamping Collar
- ____ -DX Dex-o-tex Flange
- ____ -FG Free Set Grate (Previously Z-302)
- ____ -IG Integral Grate (See Z-301)
- ____ -NE Spark Proof Non-Conductive Top
- ____ -ST Solid Top
- ____ -VP Vandal Proof Secured Top
- ____ -WB Water Supply Control Box (See Z-1464)

*REGULARLY FURNISHED UNLESS OTHERWISE SPECIFIED

REV.	DATE: 2/6/98	C.N. NO. 79858
DWG. NO. P-14598		PRODUCT NO. Z-300-80