



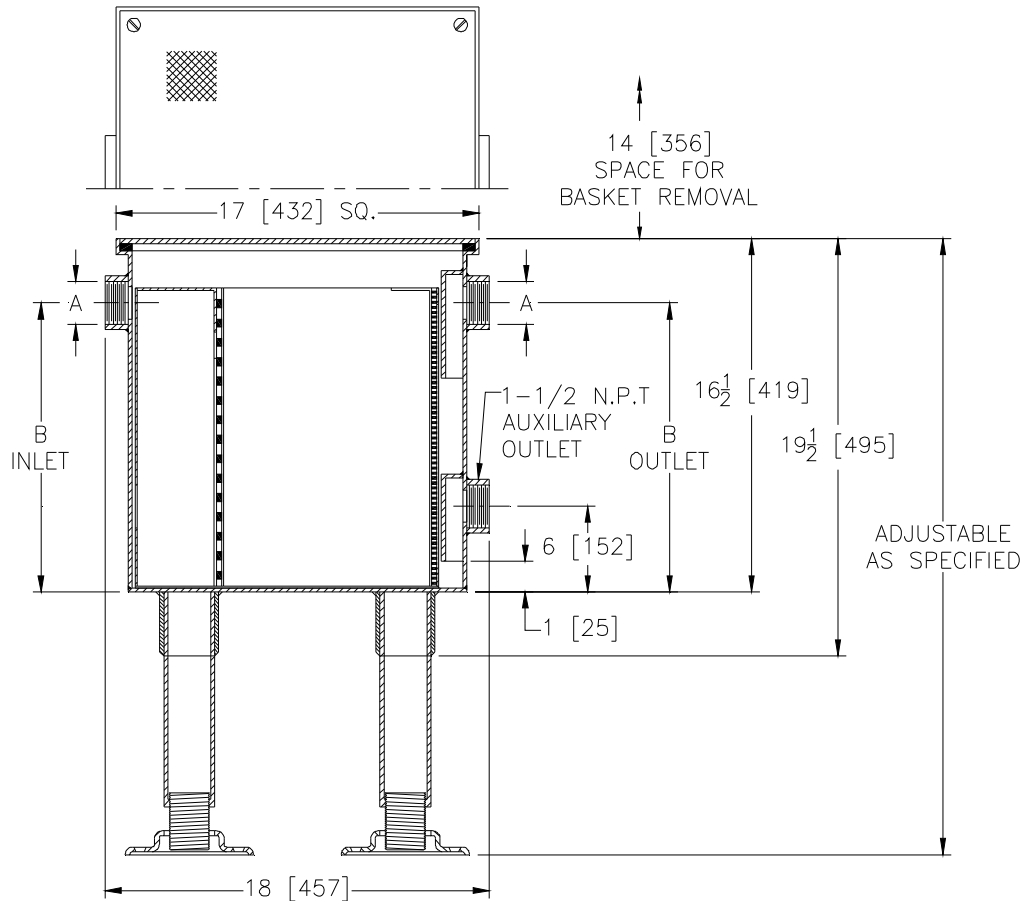
# Z1181-101

## INLINE SOLIDS INTERCEPTOR WITH LEGS

SPECIFICATION SHEET

TAG \_\_\_\_\_

Dimensional Data (inches and [ mm ]) are Subject to Manufacturing Tolerances and Change Without Notice



'A' Inlet/Outlet	'B' In. [mm]	Flow Rate GPM [LPM]	Approx. Wt. Lbs. [kg]
1-1/2, 2* [38,51]	13-1/2 [343]	30 [113]	-
3 [76]	13 [330]	30 [113]	-

### ENGINEERING SPECIFICATION: ZURN ZS1181-101

Large capacity Type 304 stainless steel solids interceptor, in lieu of fixture 'P' trap, for on-floor in line with floor installation. Furnished with a removable Type 304 stainless steel bucket having removable primary (3/8" [10mm] dia. holes) and secondary (3/32" [2mm] dia. holes) flow diffusing/intercepting brass screens, and complete with a top access gasketed secured cover and adjustable legs.

**OPTIONS** (Check/specify appropriate options)

### PREFIXES

\_\_\_ ZS Standard Assembly\* Type 304 Stainless Steel (See Engineering Specification)

### SUFFIXES

\_\_\_ -CS Custom Screens (Specify material & perforation size required)  
 \_\_\_ -R Acid Resistant Coated Interior and Exterior Fabricated Steel Recessing Receiver for Recessed Installation is Equipped with Adjustable Support Brackets and Gasketed Non-Skid secured cover with removable Lift Handle  
 \_\_\_ -SS Stainless Steel Perforated Screens for Bucket (Specify perforation size)  
 \_\_\_ -YR Replacement Basket Assembly with Perforated Screens

\* Regularly furnished unless otherwise specified.