

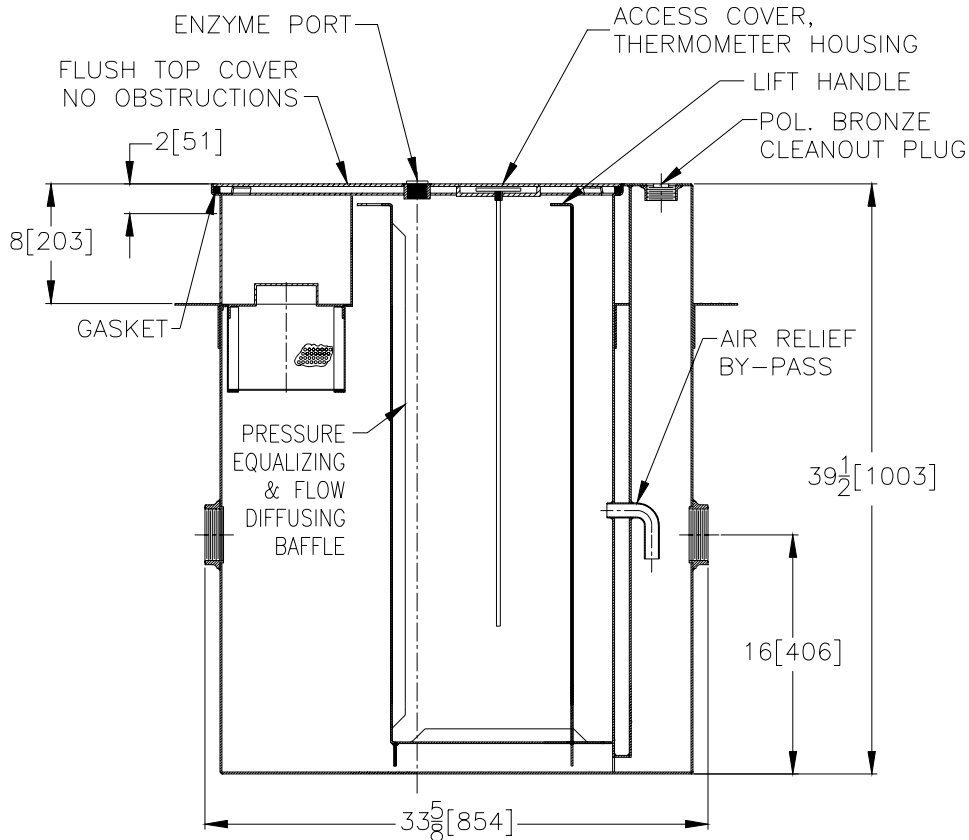


# Z-1170-89

## GREASE INTERCEPTOR WITH REMOVABLE INLET BASKET

TAG \_\_\_\_\_

Dimensional Data (inches and [ mm ]) are Subject to Manufacturing Tolerances and Change Without Notice



INLET    WIDTH OF BODY = 24 1/2[600]    OUTLET

Size	Outlet Size	Flow Rate G.P.M. [L]	Capacity		Approx. Wt. Lbs. [kg]
			Water Gal. [L]	Grease Lbs. [kg]	
800	3 [75]	50 [189]	40 [151]	100 [45]	180 [82]

**ENGINEERING SPECIFICATION:** ZURN Z-1170-89 size 800 Acid Resistant coated interior and exterior fabricated steel with type 304 fabricated stainless steel removable inlet basket, with 6[153] x 8[203] inlet opening, 3[76] X 3[76] anchor flange 8[203] down from top, thermometer with access cover, removable combination pressure equalizing/flow diffusing baffle and sediment tray, internal air relief bypass, bronze cleanout plug and visible double wall trap seal and NPT threaded female inlet and outlet connection, gasketed nonskid secured cover. Note: location of outlet from bottom of interceptor cannot be changed.

<b>REV. A</b>	<b>DATE: 10/17/97</b>	<b>C.N. NO. 78795</b>
<b>DWG. NO. P-14532    PRODUCT NO. Z-1170-89</b>		

\*REGULARLY FURNISHED UNLESS OTHERWISE SPECIFIED