



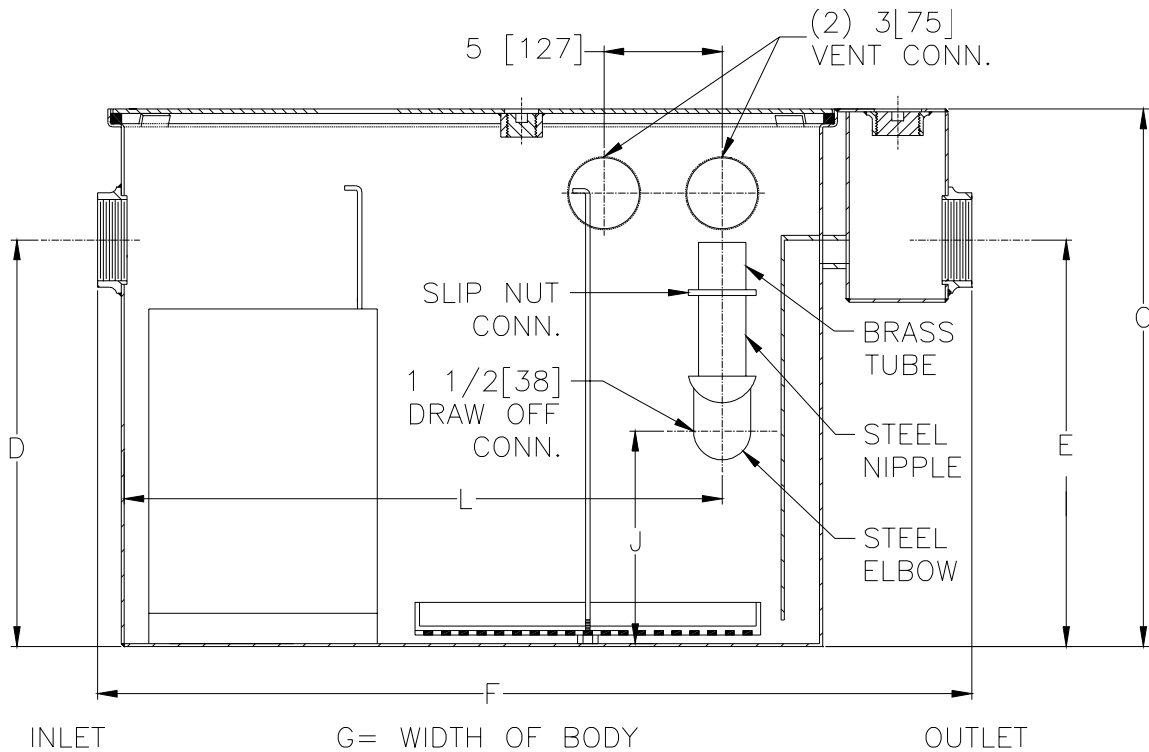
Z-1188-116

LARGE CAPACITY OIL INTERCEPTOR

SPECIFICATION SHEET

TAG _____

Dimensional Data (inches and [mm]) are Subject to Manufacturing Tolerances and Change Without Notice



Flow Rate GPM[L]Min	Inlet/Outlet Size**	Water Capacity Gal. [L]	App. Wt. Lbs. [Kg]	No. of Covers	Dimensions In Inches					
					C	D/E	F	G	J	L
75 [284]	3 [75]	65 [246]	332 [151]	1	22 3/4 [578]	18 1/2 [470]	36 [914]	28 5/8 [727]	8 [203]	25 3/4 [654]
100 [379]	3 [75]	110 [306]	432 [196]	1	27 [686]	23 [584]	42 3/4 [1086]	33 5/8 [854]	10 [254]	30 1/8 [765]
125 [473]	3 [75]	150 [568]	780 [354]	2	30 1/8 [765]	24 1/2 [622]	49 1/4 [1251]	40 [1016]	14 1/4 [362]	36 5/8 [916]
150 [568]	4 [100]	190 [719]	888 [403]	2	30 3/4 [781]	25 1/4 [641]	56 [1422]	41 3/8 [1051]	14 [356]	43 7/8 [1114]
200 [757]	4 [100]	265 [1003]	1055 [478]	2	35 1/2 [901]	29 7/8 [759]	61 [1549]	43 5/8 [2286]	18 [457]	46 5/8 [1184]
250 [946]	5 [125]	460 [1741]	1438 [625]	2	41 [1041]	36 [914]	71 [1803]	51 3/8 [1305]	20 [508]	56 5/8 [1438]
300 [1136]	5 [125]	660 [2498]	1840 [835]	2	46 1/4 [1175]	39 5/8 [1006]	80 [2032]	58 3/8 [1483]	20 5/8 [524]	65 5/8 [1667]
350 [1325]	6 [150]	860 [3255]	2180 [989]	2	50 1/2 [1283]	43 7/8 [1114]	87 [2210]	63 5/8 [1616]	20 1/4 [514]	74 1/8 [1882]
400 [1514]	6 [150]	1090 [4126]	2536 [1150]	3	54 1/4 [1378]	47 5/8 [1210]	94 [2388]	67 [1702]	20 1/2 [521]	79 1/8 [2009]
450 [1703]	6 [150]	1275 [4826]	2816 [1277]	3	55 1/4 [1403]	48 5/8 [1235]	100 [2540]	72 [1829]	22 1/4 [565]	85 3/8 [2168]
500 [1893]	6 [150]	1435 [5431]	2970 [1347]	3	57 1/4 [1454]	51 5/8 [1311]	104 [2642]	74 [1880]	23 1/4 [591]	88 3/8 [2245]

ENGINEERING SPECIFICATION: ZURN Z-1188-116 Large capacity Acid Resistant Coated interior and exterior fabricated steel oil interceptor, with internal air relief by-pass, bronze cleanout plug and visible double wall trap seal, removable combination pressure equalizing/flow diffusing baffle and sediment bucket, horizontal baffle, adjustable oil drawoff and two 3 [75] vent connections either side. Secured gasketed non-skid cover complete with flow control fitting. Regularly furnished with inlet and outlet in high position.

OPTIONS (Check/specify appropriate options)

PREFIXES

_____ Z- Acid Resistant Coated Fabricated Steel*

SUFFIXES

- _____ -E Acid Resistant Coated interior and exterior fabricated steel extension section. (Specify 'C' Dim. required) for recessed installation.
- _____ -HD Heavy duty traffic cover rated at 10,000 [4536] maximum safe live load.
- _____ -K Anchor flange 1 3/4 [44] down from top and 2 [51] wide. No extension required to accommodate -K.
- _____ -KC Anchor flange 1 3/4 [44] down from top and 2 [51] wide with clamp collar.

*REGULARLY FURNISHED UNLESS OTHERWISE SPECIFIED

REV.	DATE: 10/25/01	C.N. NO. 88143
DWG. NO. P-14851	PRODUCT NO. Z-1188-116	