



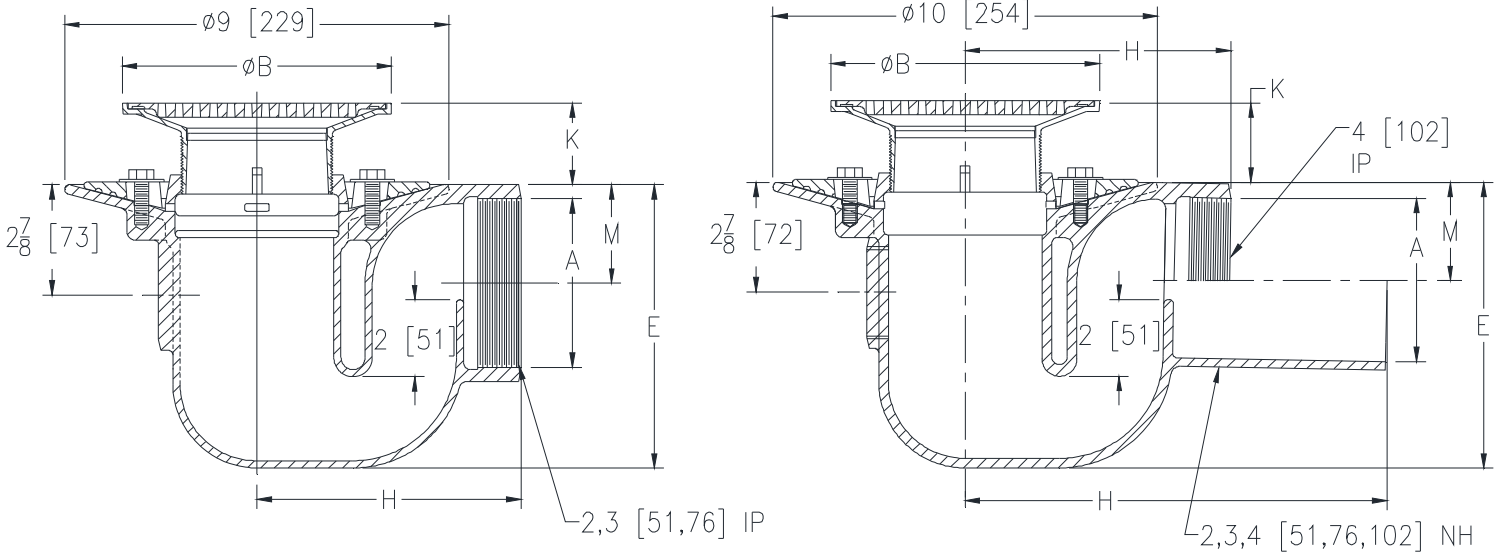
Z450B-C

DRUM TRAP DRAIN W/ "TYPE B" STRAINER AND CLAMP COLLAR

SPECIFICATION SHEET

TAG _____

Dimensional Data (inches and [mm]) are Subject to Manufacturing Tolerances and Change Without Notice



Dimensions In Inches [mm]								Approx. Wt. Lbs. [kg]	Strainer Open Area Sq. In. [cm ²]
A - Pipe Size	B - Strainer Diameter	H		K		M			
		IP	NH	Min.	Max.	IP	NH		
2 [51]	5 [127]	6-1/16 [154]	11 [279]	7/8 [22]	2 [51]	1-15/32 [37]	2 [51]	18 [8]	8 [52]
3 [76]		6-7/16 [164]				2-3/32 [53]	2-9/16 [65]		
4 [102]		6-7/8 [175]				2-19/32 [66]	2-19/32 [66]		
2 [51]	6 [152]	6-1/16 [154]	11 [279]	1-1/8 [29]	2-1/4 [57]	1-15/32 [37]	2 [51]	19 [9]	9 [58]
3 [76]		6-7/16 [164]				2-3/32 [53]	2-9/16 [65]		
4 [102]		6-7/8 [175]				2-19/32 [66]	2-19/32 [66]		
2 [51]	8 [203]	6-1/16 [154]	11 [279]	1-1/2 [38]	2-5/8 [67]	1-15/32 [37]	2 [51]	33 [15]	18 [116]
3 [76]		6-7/16 [164]				2-3/32 [53]	2-9/16 [65]		
4 [102]		6-7/8 [175]				2-19/32 [66]	2-19/32 [66]		

ENGINEERING SPECIFICATION: ZURN ZN450B-C Drum trap floor and shower drain, Dura-Coated cast iron body with, integral trap and side outlet with seepage pan, clamp collar and adjustable "TYPE B" polished, nickel bronze strainer.

OPTIONS (Check/specify appropriate options)

PIPE SIZE

- 2, 3 [51, 76]
- 4 [120]
- 2, 3, 4 [51, 76, 102]

(Specify size/type) **OUTLET**

- _____ IP Threaded
- _____ IP Threaded
- _____ NH No-Hub

'E' BODY HT. DIM.

- 6-1/2 [165]
- 7-3/8 [187]
- 7-3/8 [187]

PREFIXES

- _____ ZB D.C.C.I. Body Assembly w/Polished Bronze Top
- _____ ZN D.C.C.I. Body Assembly w/Polished Nickel Bronze Top*

SUFFIXES

- _____ -G Galvanized Cast Iron
- _____ -P Trap Primer Connection (Specify 1/2 [13] or 3/4 [19])
- _____ -PC Protective Cover
- _____ -U 1 - 3 [25 - 76] High Extension Adapter
- _____ -V Backwater Valve (Ball Float Type)
- _____ -VP Vandal-Proof Secured Top
- _____ -Y Sediment Bucket

* Regularly furnished unless otherwise specified.