



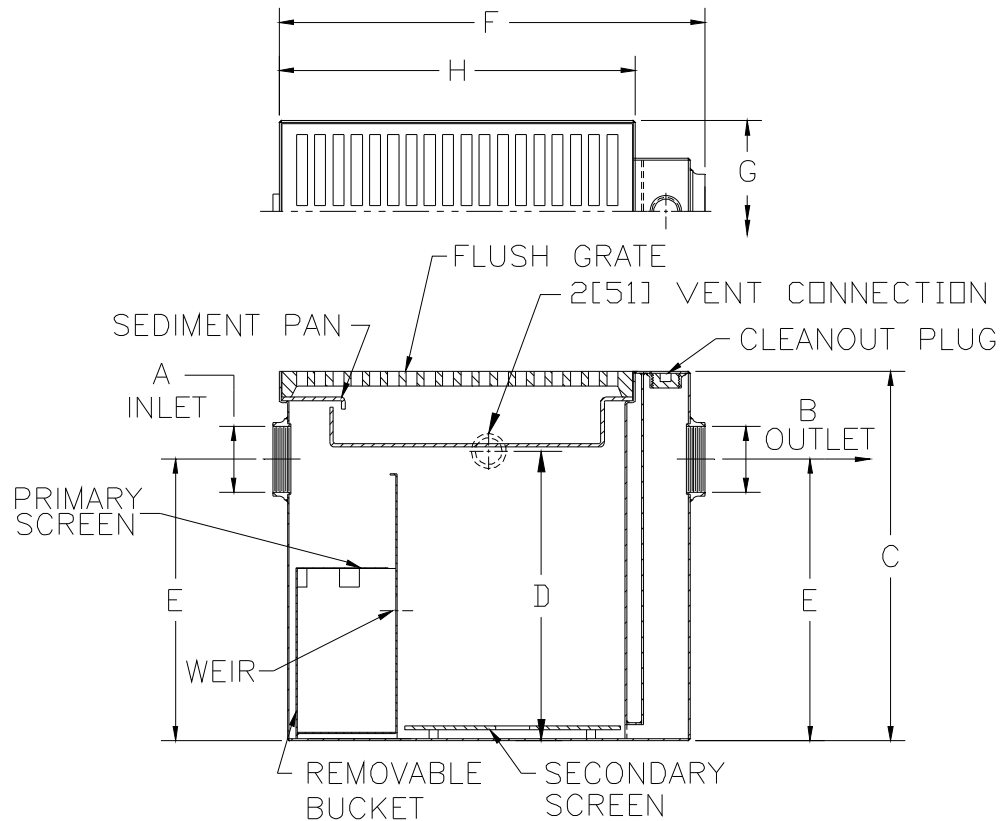
# Z1189-86

## OIL/SEDIMENT INTERCEPTOR WITH HEAVY-DUTY GRATE AND INLET

SPECIFICATION SHEET

TAG \_\_\_\_\_

Dimensional Data (inches and [ mm ]) are Subject to Manufacturing Tolerances and Change Without Notice



Size	Sludge Capacity Lbs. [kg]	Grate Open Area [cm <sup>2</sup> ]	No. of Grates	No. of Pans	Approx. Wt. Lbs. [kg]	A Pipe Size	B Pipe Size	Dimension In Inches					
								C	D	E	F	G	H
12	12 [5]	49 [316]	1	1	70 [32]	----	2 [50]	15 [381]	----	10 1/2 [267]	17 1/8 [435]	11 3/8 [289]	12 3/8 [314]
60	60 [27]	131 [845]	1	1	175 [79]	4 [75]	4 [75]	25 1/4 [641]	19 1/4 [489]	17 5/8 [448]	29 1/8 [740]	12 3/8 [314]	24 3/8 [619]
100	100 [45]	262 [1690]	2	1	280 [127]	4 [75]	4 [75]	33 [838]	27 [686]	22 [559]	29 1/8 [740]	24 3/8 [619]	24 3/8 [619]
200	200 [91]	393 [2535]	3	1	370 [168]	4 [75]	4 [75]	33 [838]	27 [686]	22 [559]	41 1/8 [1044]	24 3/8 [619]	36 3/8 [924]
300	300 [136]	524 [3380]	4	1	460 [208]	4 [75]	4 [75]	33 [838]	27 [686]	22 [559]	53 1/8 [1349]	24 3/8 [619]	48 3/8 [1229]

**ENGINEERING SPECIFICATION:** ZURN Z1189-86 Acid Resistant Coated interior and exterior fabricated steel oil/sediment interceptor with 4[75] inlet and outlet, bronze cleanout plug and visible double wall trap seal, removable sediment bucket, horizontal baffle, internal vent connection, with Dura-Coated heavy-duty cast iron grate.

**PREFIXES**

\_\_\_ Z Acid Resistant Coated Fabricated Steel\*

**SUFFIXES**

- \_\_\_ -DG Duresist Grate
- \_\_\_ -E Acid Resistant Coated Interior and exterior fabricated steel extension section. (Specify 'C' Dim. required)
- \_\_\_ -K Anchor flange 1 3/4 [44] down from top and 2 [51] wide.
- \_\_\_ -KC Anchor flange 1 3/4 [44] down from top and 2 [51] wide with seepage holes and clamp collar.
- \_\_\_ -SC Heavy-Duty Solid Traffic Cover (max. safe live load 10,000 lbs. [4536kg].)

REV.	DATE: 12/09/11	C.N. NO. 122532
DWG. NO. 308367		PRODUCT NO. Z1189-86

\*REGULARLY FURNISHED UNLESS OTHERWISE SPECIFIED