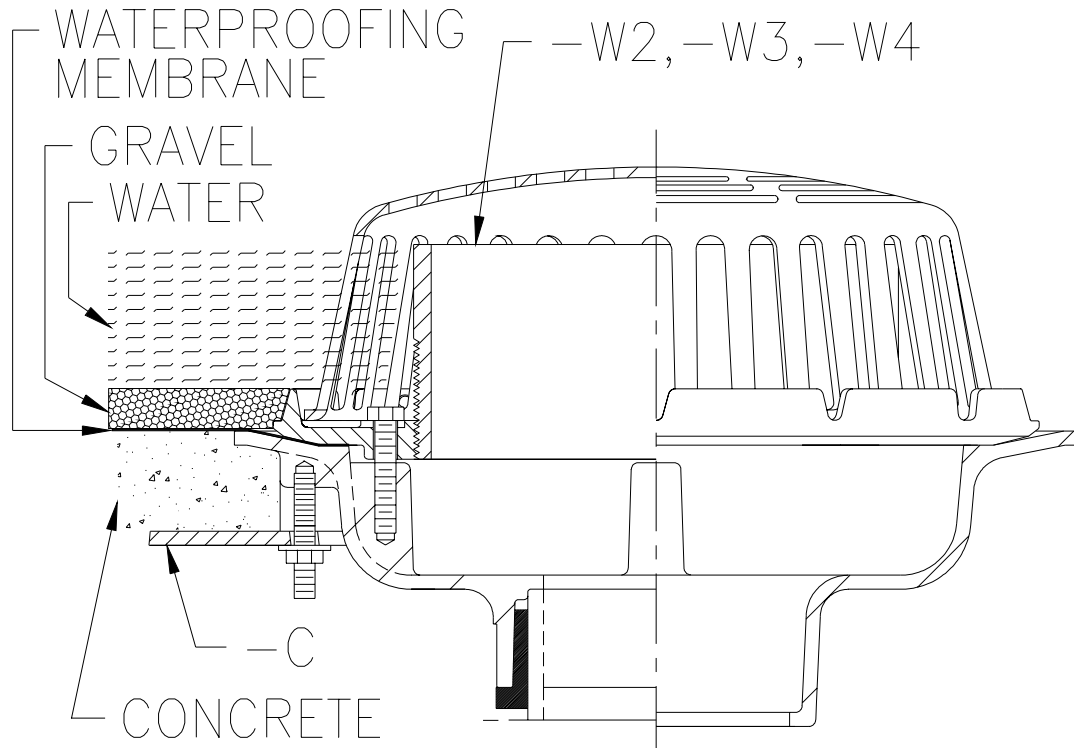




TYPICAL INSTALLATION FOR Z-100-C-W2, W3, W4 PRECAST CONCRETE DECK WITH OVERFLOW DRAINAGE

Dimensional Data (inches and [mm]) are Subject to Manufacturing Tolerances and Change Without Notice



Z-100-C-W2, W3, W4 PRECAST CONCRETE DECK WITH OVERFLOW DRAINAGE

Drain installed in a precast concrete deck. Drain is illustrated with underdeck clamp (-C), 4 [102] internal water dam (-W4). The (-W4) option is used to maintain a 4 [102] water level on the roof for insulation purposes or for secondary drainage. The water dam is offered in 2 [51] (-W2), 3 [76] (-W3), or 4 [102] (-W4) heights to meet specific application requirements.

Form # RD16

Date: 8/4/99

C.N. No. 83029

Rev.

ZURN INDUSTRIES, INC. ♦ SPECIFICATION DRAINAGE OPERATION ♦ 1801 Pittsburgh Ave. ♦ Erie, PA 16514

Phone: 814/455-0921 ♦ Fax: 814/454-7929 ♦ World Wide Web: www.zurn.com

In Canada: ZURN INDUSTRIES LIMITED ♦ 3544 Nashua Drive ♦ Mississauga, Ontario L4V1L2 ♦ Phone: 905/405-8272 Fax: 905/405-1292