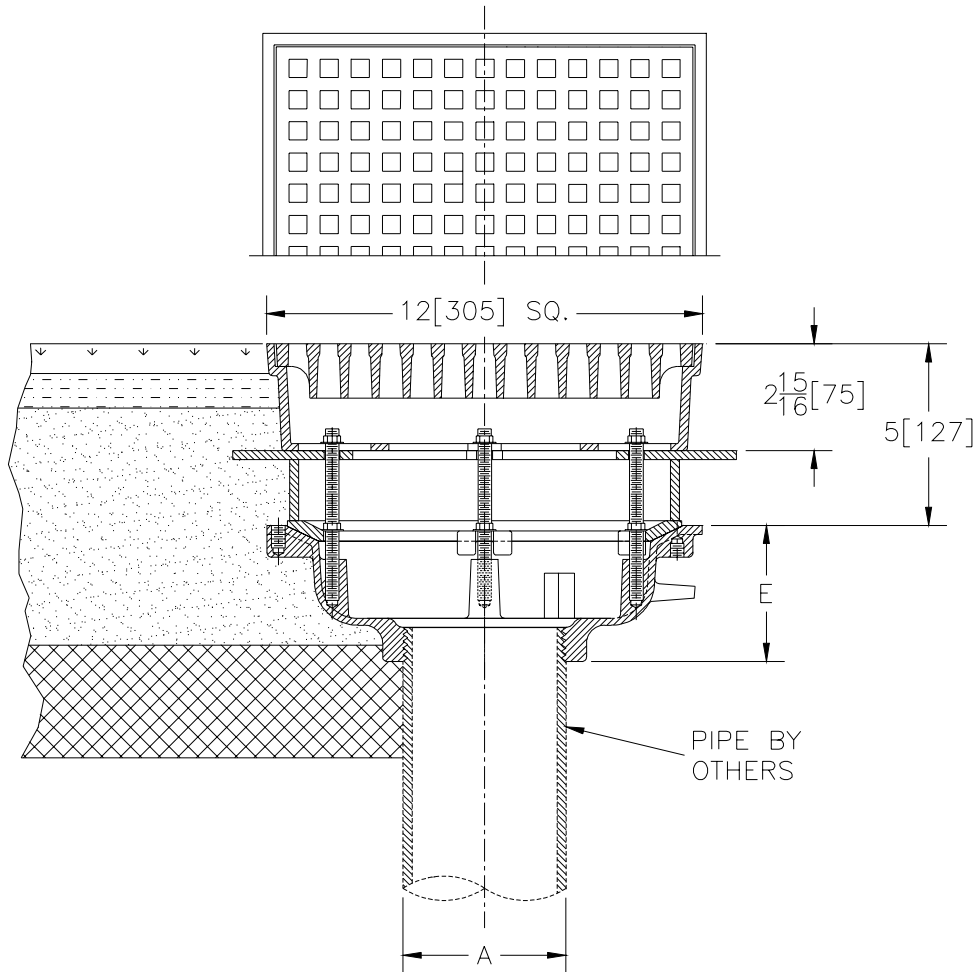




Z-121-87 12" SQUARE YARD DRAIN

TAG _____

Dimensional Data (inches or [mm]) are Subject to Manufacturing Tolerances and Change Without Notice



A Pipe Size In.[mm]	Approx. Wt. Lbs.[kg]	Grate Open Area Sq. In.[cm ²]
2,3,4,6[50,75,100,150]	54 [24]	44 [284]

ENGINEERING SPECIFICATION: ZURN Z-121-87 12[305] Square top drain. Dura-Coated cast iron body with flat clamping collar, lateral adjustable extension frame combination and grate with 1/2[13] square holes.

OPTIONS (Check/specify appropriate options)

OUTLET (Specify type)
 _____ IP Threaded

PIPE SIZE (Specify size)
 _____ 2,3,4,6[50,75,100,150]

'E' BODY HT. DIMENSION
 3 3/4 [95]

PREFIXES

- _____ Z- D.C.C.I. Body and Top.*
- _____ ZB- D.C.C.I. Body with Polished Bronze Top.
- _____ ZN- D.C.C.I. Body with Polished Nickel Bronze Top

REV. A	DATE: 08/29/96	C.N. NO. 75555
DWG. NO. P-14330 PRODUCT NO. Z-121-87		

*REGULARLY FURNISHED UNLESS OTHERWISE SPECIFIED