



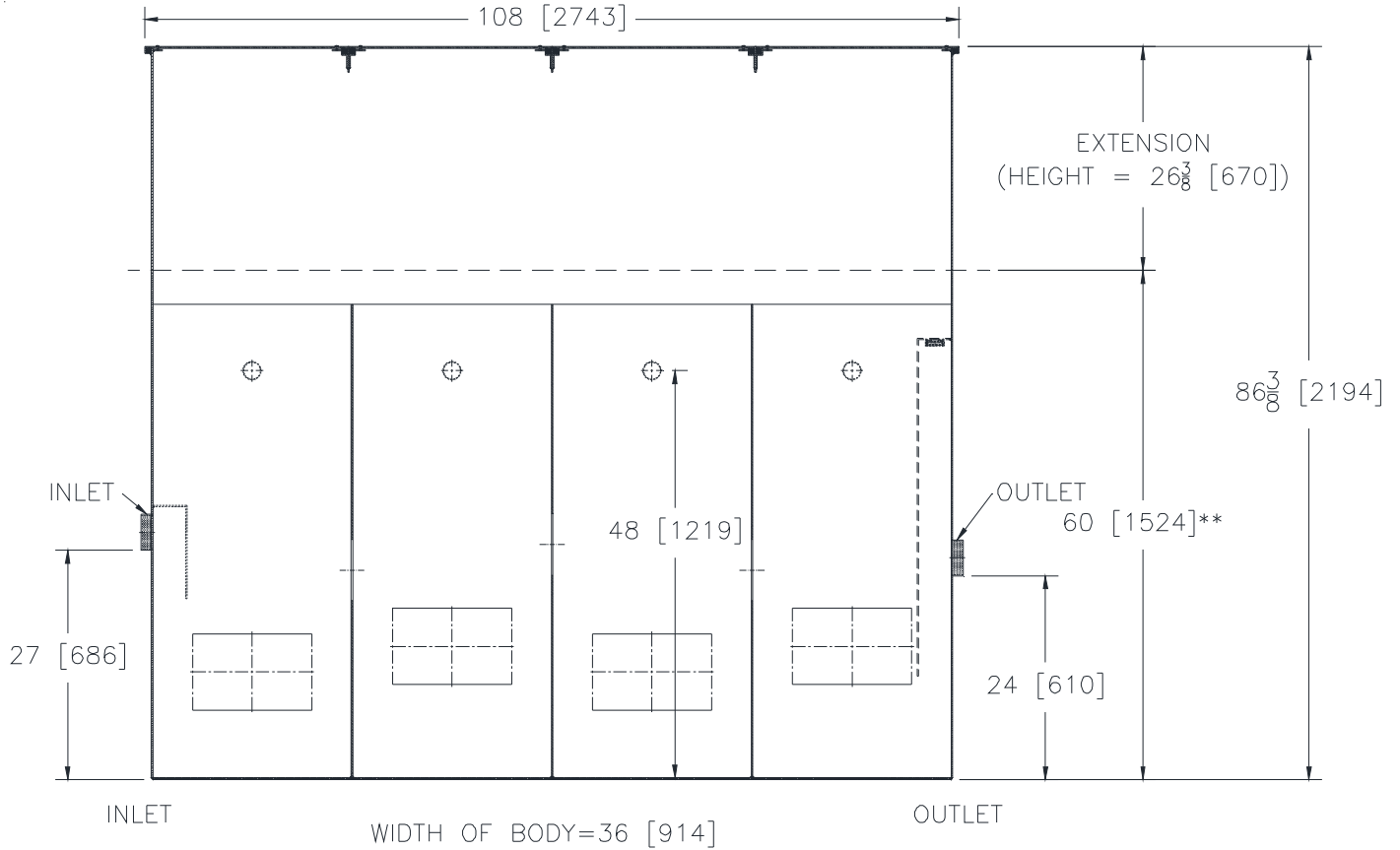
Z1187-93

SIZE 600 SAND AND SEDIMENT INTERCEPTOR
 WITH INTEGRAL EXTENSION AND 5 [127] INLET/OUTLET

SPECIFICATION SHEET

TAG _____

Dimensional Data (inches and [mm]) are Subject to Manufacturing Tolerances and Change Without Notice



Size	Cubic Ft. [Cubic M.]	Approx. Wt.Lbs. [kg]	F-Dim in Inches
600	60.75 [1.72]	2800 [1270]	108 [2743]

ENGINEERING SPECIFICATION: ZURN Z1187-93
 Acid Resistant Coated fabricated steel sand and sediment separator, 60.75 cu. ft. [1.72 cu. meters] capacity below invert of outlet, 5" [127mm] threaded inlet and outlet, four 2" [51mm] threaded individual vent connections, integral extension, complete with heavy duty scoriated non-skid gasketed removable cover(s).

OPTIONS (Check/specify appropriate options)

PREFIXES

___ Z Acid Resistant Coated Fabricated Steel*

SUFFIXES

___ -K Anchor flange 1-3/4 [44] down from top and 2 [51] wide.
 ___ -HD Extra heavy duty reinforced cover for vehicular traffic.
 (Specify working load requirements)

** Standard interceptor height for all sizes is 60 [1524]. Specify extension height and overall height required.

* Regularly furnished unless otherwise specified.