



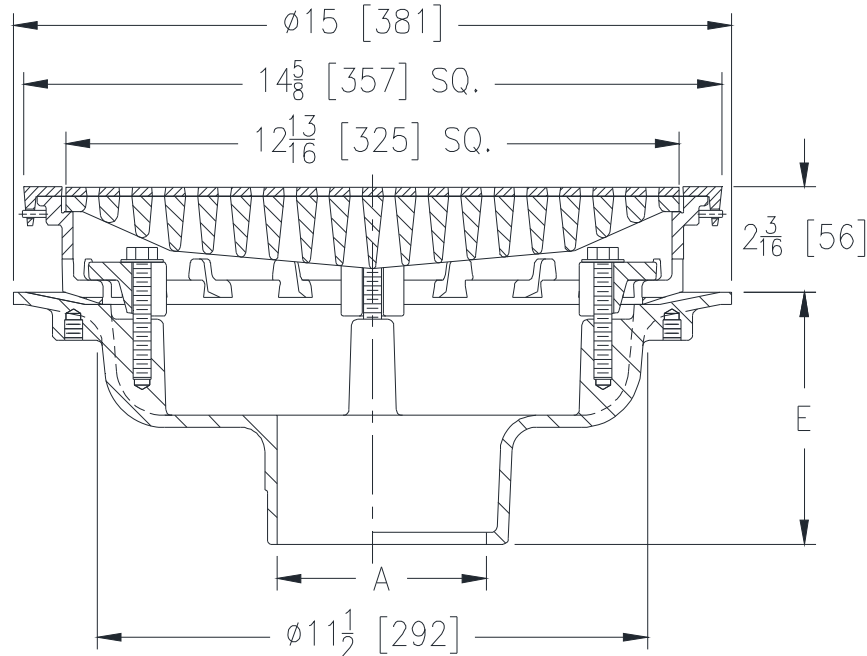
Z150-108

14" [356] TOP PROM-DECK DRAIN WITH S.S
HEEL-PROOF GRATE

SPECIFICATION SHEET

TAG _____

Dimensional Data (inches and [mm]) are Subject to Manufacturing Tolerances and Change Without Notice



A- Pipe Size In. [mm]	Approx. Wt. Lbs. [kg]	Grate Open Area Sq. In. [cm ²]
2,3,4 [51,76,102]	53 [24]	44 [284]
5,6 [127,152]		
8 [203]	54 [24]	
10 [254]		

ENGINEERING SPECIFICATION: ZURN Z150-108

14" [356mm] Top Prom-Deck drain, Dura-Coated cast iron body with promenade frame and heavy-duty, heel proof grate with combination membrane flashing clamp/gravel guard, stainless steel veneer frame and heel-proof stainless steel veneer grate.

OPTIONS (Check/specify appropriate options)

PIPE SIZE

- 2,3,4,6,8,10 [51,76,102,152,203,254]
- 2,3,4,6,8,10 [51,76,102,152,203,254]
- 2,3,4,6,8,10 [51,76,102,152,203,254]
- 2,3,4 [51,76,102]

(Specify size/type) **OUTLET**

- ___ IC Inside Caulk
- ___ IP Threaded
- ___ NH No-Hub
- ___ NL Neo-Loc

E BODY HT. DIM.

- 5-1/4 [133]
- 3-3/4 [95]
- 5-1/4 [133]
- 4-5/8 [117]

PREFIXES

- ___ ZS- Polished Stainless Steel Top*

SUFFIXES

- ___ -AR Acid Resistant Epoxy Coated
- ___ -C Underdeck Clamp
- ___ -DB Deep Sump Body
- ___ -DE Deck Extension
- ___ -DP Top-Set® Roof Deck Plate (Replaces both the -C and -R)
- ___ -DR Top-Set® Drain Riser (Adjustment from 3-5/8 [92] to 7-1/4 [184])
- ___ -DX Dex-o-tex Flange (ZB and ZN Only)
- ___ -E Static Extension 1 [25] thru 4 [102] (Specify Ht.)
- ___ -EA Adjustable Extension Assembly 2-1/8 [54] thru 3-1/2 [89]

- ___ -EB Top-Set® Adjustable Extension Assembly
- ___ -G Galvanized Cast Iron
- ___ -R Roof Sump Receiver
- ___ -S Secondary Strainer
- ___ -SC Secondary Clamp Collar
- ___ -TC Neo-Loc Test Cap Gasket (2,3,4 [51,76,102] NL Bottom Outlet Only)
- ___ -TS Top Secured with Slotted Screws
- ___ -VP Vandal-Proof Secured Top
- ___ -XJ Vertical Expansion Joint (See Z190)
- ___ -Y Sediment Bucket
- ___ -85 Stainless Steel Perforated Extension
- ___ -90 90° Threaded Side Outlet Body (2,3,4,5,6 [51,76,102,127,152])

* Regularly furnished unless otherwise specified.