



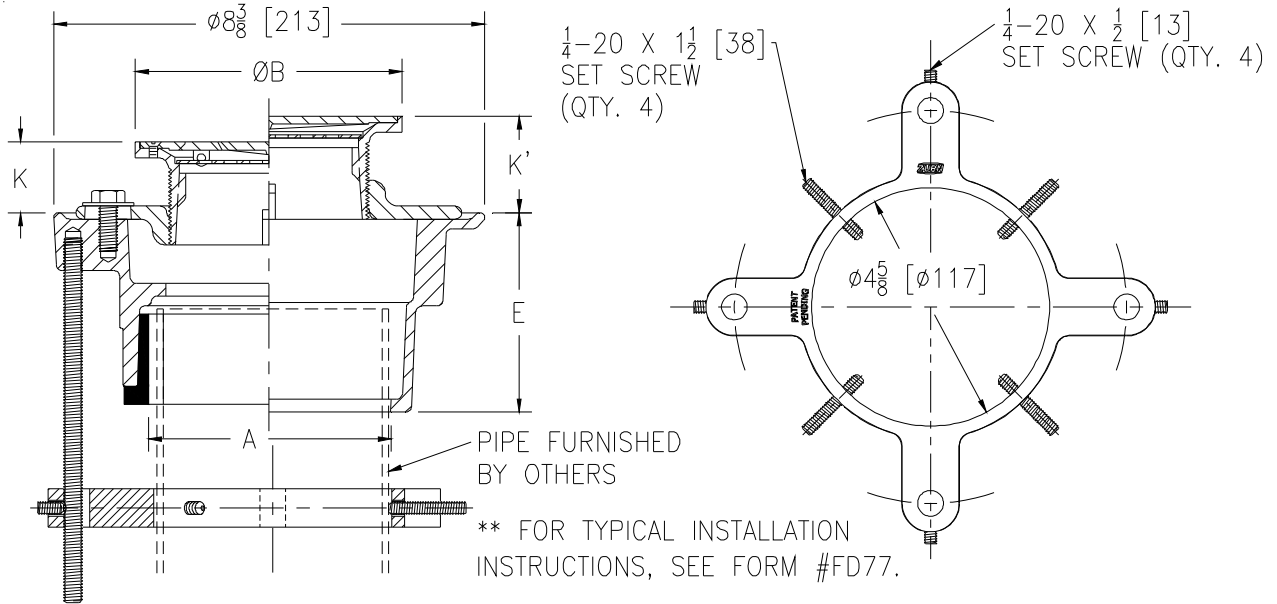
Z415D-SR

FLOOR AND SHOWER DRAIN W/ "TYPE D" STRAINER AND STABILIZER RING

SPECIFICATION SHEET

TAG _____

Dimensional Data (inches and [mm]) are Subject to Manufacturing Tolerances and Change Without Notice



Dimensions in inches [mm]						Approx Wt. lbs [kg]
A Pipe Size	B Strainer Dia.	K		K'		
		Min	Max	Min	Max	
2,3 [51,76]	5 [127]	1 [25]	1-1/2 [38]	1-3/32 [28]	2-1/4 [57]	13 [6]
2,3,4 [51,76,102]	6 [152]		1-25/32 [45]	1-13/32 [36]	2-17/32 [64]	15 [7]
2,3,4 [51,76,102]	7 [178]	1-5/32 [30]	2-1/8 [54]	1-23/32 [44]	2-7/8 [73]	16 [7]
3,4 [76,102]	8 [203]			1-3/4 [44]		18 [8]

ENGINEERING SPECIFICATION: ZURNZN415D-SR

Floor and shower drain, Dura-Coated cast iron body with bottom outlet, combination invertible membrane clamp and adjustable collar with seepage slots and "TYPE D" polished, hinged solid, nickel bronze, light-duty strainer. Complete with Dura-Coated cast iron floor drain stabilizer ring with four 1/4-20 x 1/2" [13mm] securing screws to 3/8-16 x 7" [178mm] threaded rods and four 1/4-20 x 1-1/2" [38mm] securing screws to outlet piping.

OPTIONS (Check/specify appropriate options)

PIPE SIZE	(Specify size/type) OUTLET	E BODY HT. DIM.
2,3,4 [51,76,102]	_____ IC Inside Caulk	4-3/16 [106]
2 [51]	_____ IP Threaded	2-7/16 [60]
3 [76]	_____ IP Threaded	2-3/4 [67]
4 [102]	_____ IP Threaded	2-13/16 [73]
2,3,4 [51,76,102]	_____ NH No-Hub	3-13/16 [98]
2,3,4 [51,76,102]	_____ NL Neo-Loc	3-7/8 [98]

PREFIXES

- _____ ZB D.C.C.I. Body with Polished Bronze Top
- _____ ZN D.C.C.I. Body with Polished Nickel Bronze Top*

SUFFIXES

- _____ -AR Acid Resistant Epoxy Coated
- _____ -G Galvanized Cast Iron
- _____ -P Trap Primer Connection
(Specify 1/2 [13] or 3/4 [19])
- _____ -PC Protective Cover
- _____ -TC Neo-Loc Test Cap Gasket
(2,3,4 [51,76,102] NL Bottom Outlet Only)
- _____ -U 1 - 3 [25 - 76] High Extension Adapter
- _____ -V Backwater Valve
- _____ -VP Vandal Proof Secured Top
- _____ -Y Sediment Bucket

* Regularly furnished unless otherwise specified.