

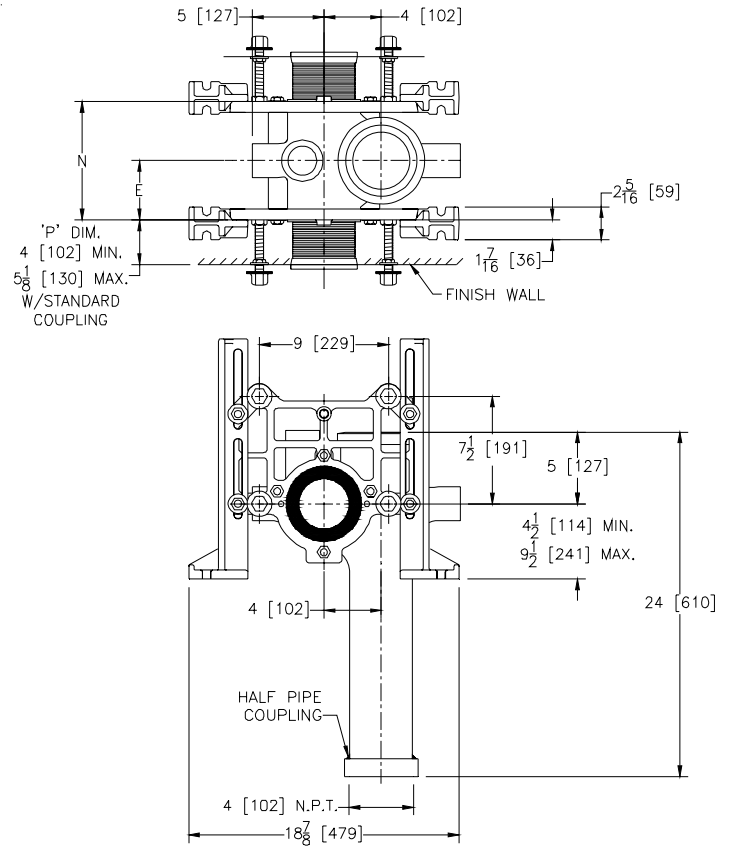


# Z1209-HD4-T

## VERTICAL OFFSET BACK TO BACK SIPHON JET WATER CLOSET SUPPORT SYSTEM W/ THREADED OUTLET CONNECTION

TAG \_\_\_\_\_

Dimensional Data (inches and [ mm ]) are Subject to Manufacturing Tolerances and Change Without Notice



**Note:**

1. Min. 'P' Dim. Obtainable=2 [51]
2. Feet bolted to floor using min. 1/2 [13] dia. bolts and back slots on carrier feet.

Product No.	Dimension In Inches		Approx. Wt. Lbs. [kg]
	E	N	
Z1209-HD4-T	4 1/8 [105]	8 1/4 [178]	82 [37]

**ENGINEERING SPECIFICATION: ZURN Z1209-HD4-T**

Vertical Offset Back to Back Siphon Jet Water Closet "Rigid System" with 4 [102] size Hub inlet connection and 2 [51] vent. Complete with Dura-Coated cast iron main fitting with 4 [102] N.P.T. threaded outlet connection, separable faceplates rigidly mounted on fitting, universal floor mounted foot supports, corrosion resistant adjustable ABS couplings with integral test caps, fixture trim, stud protectors, and bonded "Neo-Seal" gasket.

**PRODUCT/DEFINITION**

\_\_\_\_\_ Z1209-HD4-T 4 [102] Hub Stack, Left Hand Offset Inlet, 2 [51] Left Hand Vent

**PREFIXES**

- \_\_\_\_\_ Z D.C.C.I. System with Zurn "ZZ" Adjustable Coupling\*
- \_\_\_\_\_ ZQ D.C.C.I. System with Non-Adjustable Coupling

**SUFFIXES**

- \_\_\_\_\_ -A Auxiliary Support Assembly (For P-Dim. greater than 18 [457])
- \_\_\_\_\_ -B Blowout Type Fixture Support
- \_\_\_\_\_ -CC Cast Iron Coupling
- \_\_\_\_\_ -CL Coupling Length Greater than 12 [305] (Specify length if greater than 6 [152])
- \_\_\_\_\_ -F Floor Mounted, Back Outlet Fixture Support
- \_\_\_\_\_ -G Galvanized Cast Iron
- \_\_\_\_\_ -JJ Two 2 [51] Auxiliary Inlet
- \_\_\_\_\_ -JS 2 [51] Auxiliary Inlet Stack Side
- \_\_\_\_\_ -JV 2 [51] Auxiliary Inlet Vent Side
- \_\_\_\_\_ -M Auxiliary Foot Support (For P-Dim. 10 [254] to 18 [457])
- \_\_\_\_\_ -VP Vandal Proof Trim
- \_\_\_\_\_ -W Adapter for Womens Urinal
- \_\_\_\_\_ -X3 3 [76] Foot Extension Assembly
- \_\_\_\_\_ -X4 4 [102] Foot Extension Assembly
- \_\_\_\_\_ -29 Mechanical Test Cap Assembly
- \_\_\_\_\_ -45 Finishing Frame for Siphon Jet System (For Blowout System Specify -45-B)
- \_\_\_\_\_ -50 Flush Valve Supply Support for W.C.
- \_\_\_\_\_ -61 "ZZ" Coupling Wrench

\*REGULARLY FURNISHED UNLESS OTHERWISE SPECIFIED

REV.	DATE: 7/16/10	C.N. NO. 111389
DWG. NO. 301329		PRODUCT NO. Z1209-HD4-T