

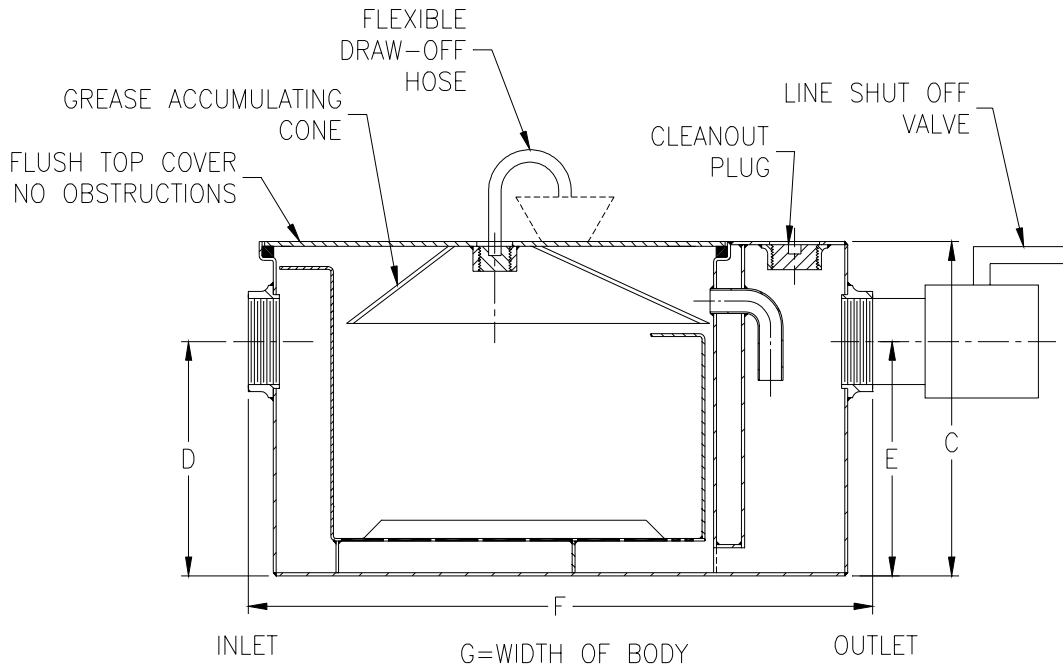


# Z-1173-79

## GREASEPTOR WITH GREASE ACCUMULATING CONE AND INLINE SHUTOFF VALVE

TAG \_\_\_\_\_

Dimensional Data (inches and [ mm ]) are Subject to Manufacturing Tolerances and Change Without Notice



Size	Inlet/Outlet Size**	Flow Rate G.P.M. [L]	Capacity		Approx. Wt. Lbs. [kg]	Dimensions in Inches			
			Water Gal. [L]	Grease Lbs. [kg]		C	D/E	F	G
200	2 [50]	7 [26]	5 [19]	14 [6]	56 [25]	11 1/4 [286]	8 1/8 [206]	21 3/4 [552]	11 7/8 [302]
300		10 [38]	6 [23]	20 [9]	70 [32]	11 3/4 [298]	8 1/4 [210]	25 1/8 [638]	14 [356]
400	3 [75]	5 [57]	10 [38]	30 [14]	87 [39]	13 3/8 [340]	9 3/8 [238]	27 1/8 [689]	16 3/4 [425]
500		20 [76]	16 [60]	40 [18]	104 [47]	15 [381]	11 3/4 [298]	30 [762]	17 1/4 [438]
600		25 [94]	21 [79]	50 [23]	129 [59]	17 [432]	12 1/2 [318]	32 1/4 [819]	19 7/8 [505]
700		35 [132]	30 [113]	70 [32]	156 [71]	18 3/4 [476]	14 1/4 [362]	34 1/8 [867]	22 1/2 [572]
800		50 [189]	40 [151]	100 [45]	186 [84]	21 1/2 [546]	16 [406]	36 [914]	24 1/2 [622]
900		75 [284]	65 [246]	150 [68]	316 [143]	22 3/4 [578]	18 1/2 [470]	36 [914]	28 5/8 [727]

**ENGINEERING SPECIFICATION:** ZURN Z-1173-79 Acid Resistant Coated interior and exterior fabricated steel grease interceptor, rated at \_\_\_\_\_ GPM and \_\_\_\_\_ Lbs. grease capacity, with internal air relief by-pass, bronze cleanout plug and visible double wall trap seal with removable combination pressure equalizing/flow diffusing baffle and sediment tray. Gasketed non-skid secured cover with grease accumulating cone, NPT to hose adaptor, 2' [610] flexible hose, hose clamp, and an in line closure valve, complete with Z-1108 Flow Control Fitting. Regularly furnished inlet and outlet in high position. Note: Location of outlet from bottom of interceptor cannot be changed.

**PREFIXES**

\_\_\_\_\_ Z- Acid Resistant Coated Fabricated Steel\*

**SUFFIXES**

- \_\_\_\_\_ -L Angle type (Z-1108-L) flow control device with plunger (no additional charge).
- \_\_\_\_\_ -R Acid Resistant Coated interior and exterior fabricated steel recessing receiver for recessed installation, is furnished with adjustable support brackets and gasketed non-skid cover with covered recessed lift handle.
- \_\_\_\_\_ -RE Acid Resistant Coated interior and exterior fabricated steel recessing receiver, enclosed type, for recessed installation. Furnished with adjustable support brackets and gasketed non-skid cover with covered recessed lift handle.

\*\* Inlet and outlet sizes shown indicate standard operating sizes and flow control settings. Size #300 will have 3[75] connections reduced to 2[50] and sizes #600 thru #900 will have 4[100] connections reduced to 3[75] as standard. If changed, flow control must be adjusted accordingly.

REV. A    DATE: 01/22/96    C.N. NO. 74034  
 DWG. NO. P-13586    PRODUCT NO. Z-1173-79

\*REGULARLY FURNISHED UNLESS OTHERWISE SPECIFIED