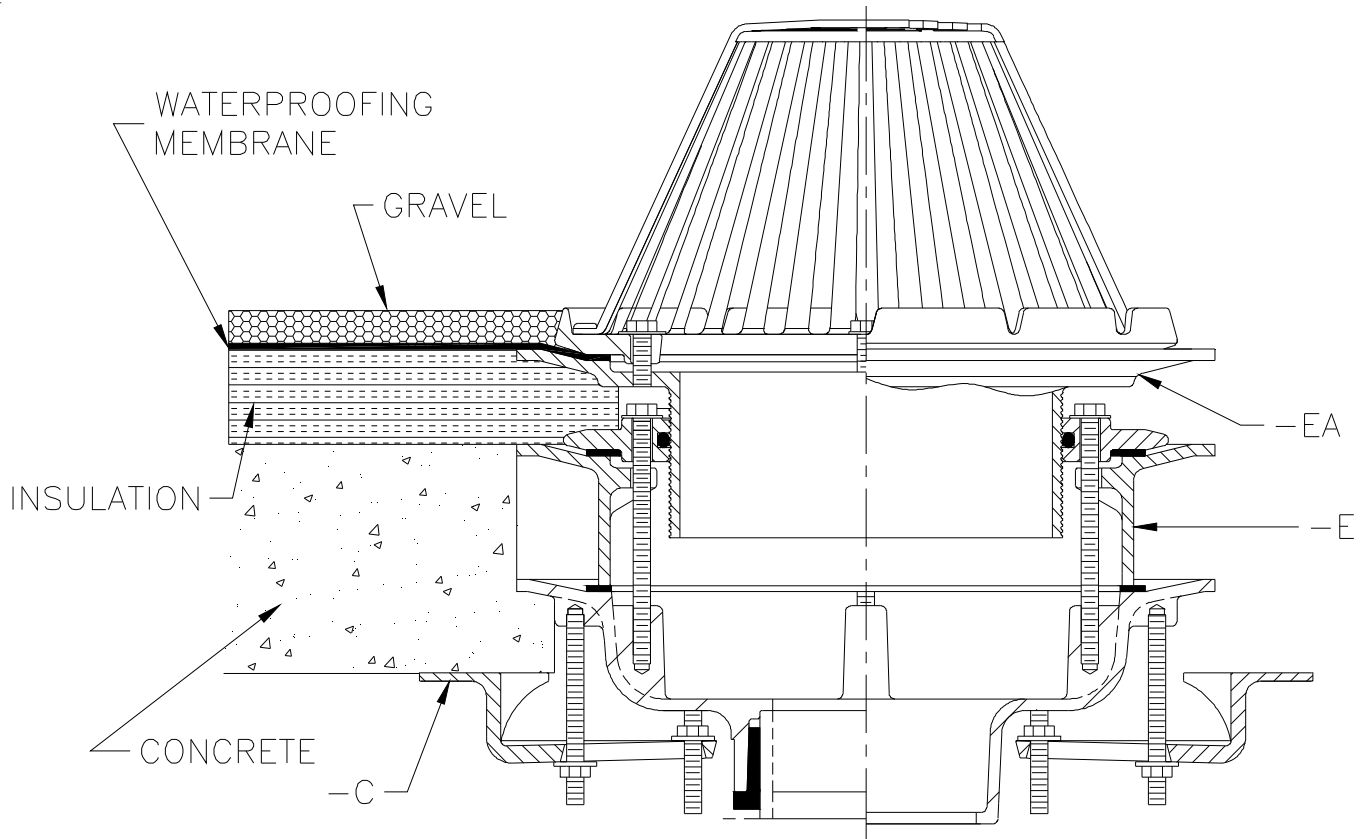




TYPICAL INSTALLATION
Z100-C-E-EA (CANADIAN MARKET)
THICK CONCRETE DECK WITH INSULATION

Dimensional Data (inches and [mm]) are Subject to Manufacturing Tolerances and Change Without Notice



Z100-C-E-EA (CANADIAN MARKET)
THICK CONCRETE DECK WITH INSULATION

Drain installed in an insulated concrete deck. Drain is illustrated with underdeck clamp (-C), static extension (-E) and adjustable extension assembly (-EA). This drain allows over 2 [51] of adjustment for varying insulation thicknesses.

Form # RD101	Date: 04/19/13	C.N. No. 129166	Rev.
--------------	----------------	-----------------	------