



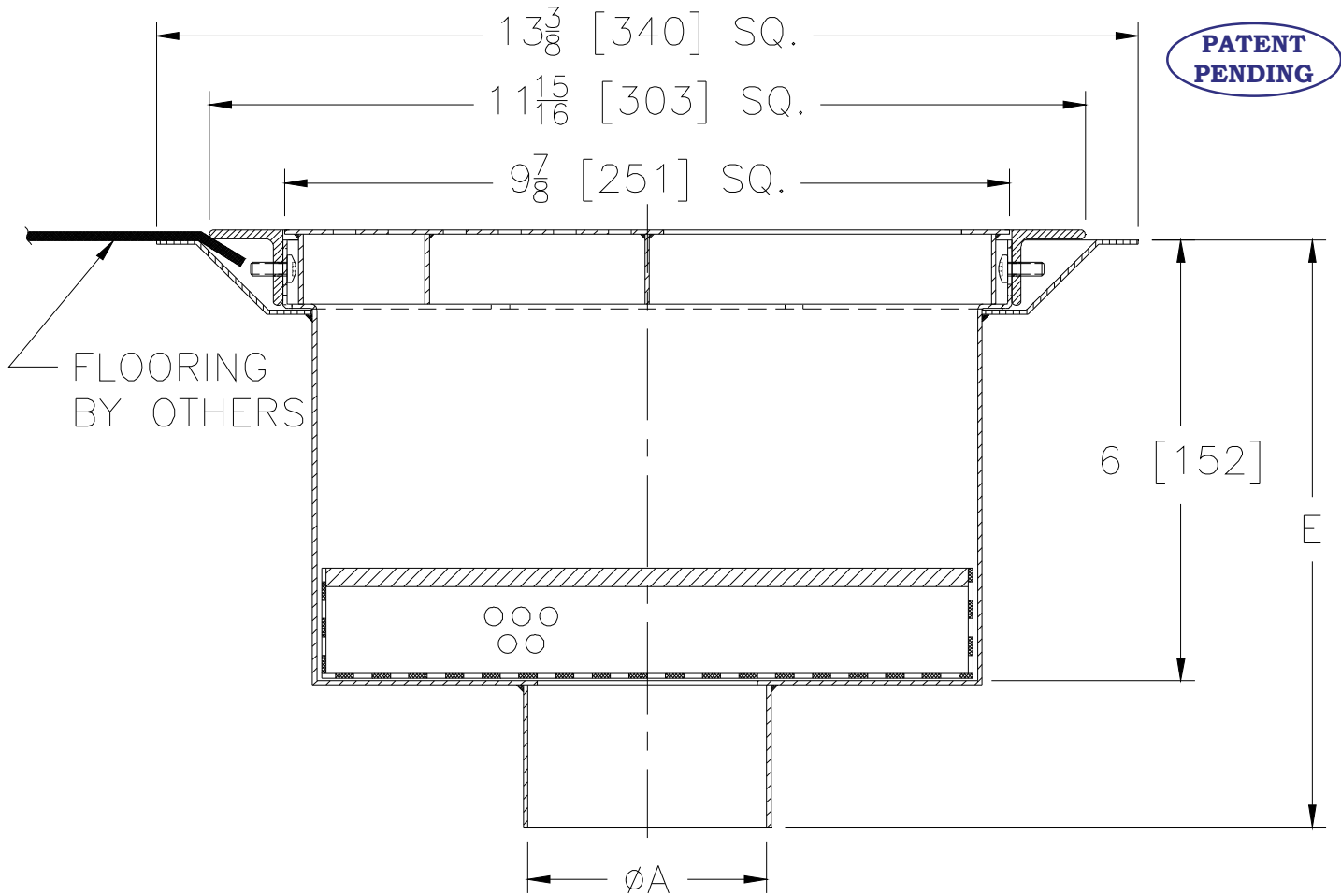
# Z1755-77

## SANI-FLOR RECEPTOR DRAIN W/HEEL-PROOF HALF GRATE & SEDIMENT BUCKET

SPECIFICATION SHEET

TAG \_\_\_\_\_

Dimensional Data (inches and [ mm ]) are Subject to Manufacturing Tolerances and Change Without Notice



A- Pipe Size In.	Approx. Wt. Lbs. [kg]	Grate Open Area Sq. In. [cm]
2-3-4[51-76-102]	10 [5]	41.3 [266]

**ENGINEERING SPECIFICATION: ZURN Z1755-77**  
 13-3/8 [340] Square x 6 [152] deep, 16 gage, All Type 304 (CF8) Fabricated stainless steel light-duty Sani-Flor receptor with removable sediment bucket and integral flooring clamp frame and non-tilt loose set heel-proof half grate for unlevel floor installations.

**OPTIONS** (Check/specify appropriate options)

**PIPE SIZE**

2-3-4[51-76-102]

(Specify size) **OUTLET**

\_\_\_ NH No-Hub

**'E' BODY HT. DIM.**

8 [203]

**PREFIXES**

- \_\_\_ Z Type 304 (CF8) Stainless Steel Body\*
- \_\_\_ ZM Type 316 (CF8M) Stainless Steel

**SUFFIXES**

- \_\_\_ -P 1/2 [13] Trap Primer Connection

\* Regularly furnished unless otherwise specified.